



 BAARTZ

Collingham Road, London, SW5

A charming one-bedroom share-of-freehold flat set on the third floor, with lift access, within Melbourne House, a well-maintained period building.

The property offers excellent ceiling heights and attractive natural light, creating a bright and welcoming living space. The reception room provides a comfortable area for both relaxing and dining, with period proportions, large sash-style windows and a pleasant outlook. The separate kitchen is neatly arranged and positioned off the main living space, offering good storage and practical worktop space.

The bedroom is well proportioned and benefits from built-in wardrobes, while the bathroom is presented in a clean, modern style with walk-in shower.

A key feature of the property is its access to the beautiful private garden square, providing a rare and tranquil green space. Melbourne House is an attractive period building and enjoys a superb position close to the restaurants, cafés, shops, museums and transport connections of the surrounding area.

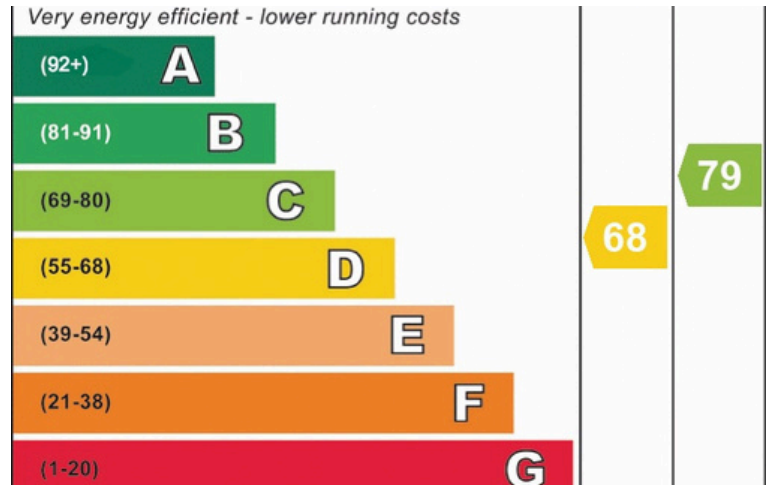
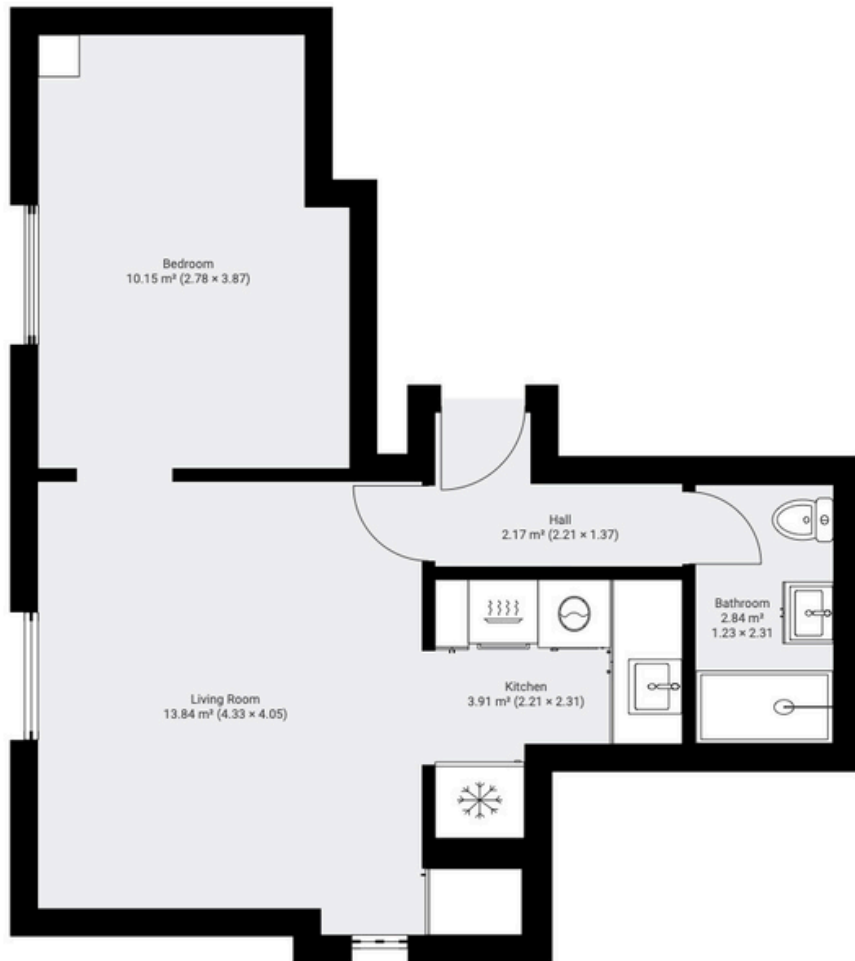
This property presents an excellent opportunity for a buyer to create an elegant London home, pied-à-terre, first-time purchase or rental investment in one of SW5's most attractive residential settings, moments from Earl's Court, Gloucester Road and South Kensington stations.











Local Authority: Royal Borough of Kensington & Chelsea

Council Tax Band: E

Tenure: Share of Freehold

