



Price
£500,000

Freehold

3x  2x  2x 

**Northdown Close,
Paddock Wood,
Tonbridge, Kent, TN12**

OVER 60?

Secure this property
for up to **59% less!**

Wards
Helping you move forwards



Main features

- **Detached & recently decorated family home**
- **New flooring to lounge/diner**
- **Convenient location close to shops & Mainline Station**
- **Great size study/work from home space**
- **Extended Ground Floor & generous size frontage**

Accommodation

GROUND FLOOR

Entrance Hall

Lounge/Diner: 23'7 x 10'7 (7.19m x 3.23m)

Conservatory: 14'5 x 9'5 (4.40m x 2.87m)

Kitchen: 10'4 x 7'8 (3.15m x 2.34m)

Utility/Cloakroom: 7'6 x 6'3 (2.29m x 1.91m)

Office: 12'5 x 7'7 (3.79m x 2.31m)

FIRST FLOOR

Landing

Bedroom 1: 11'9 x 9'6 (3.58m x 2.90m)

Bedroom 2: 10'0 x 9'6 (3.05m x 2.90m)

Bedroom 3: 8'1 x 7'9 (2.47m x 2.36m)

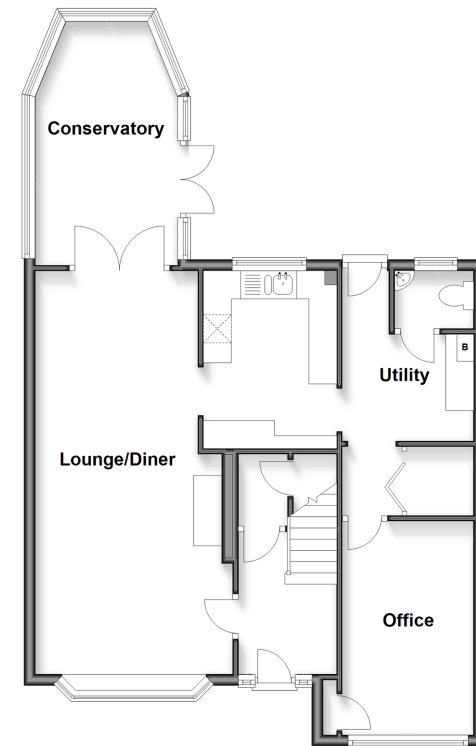
Bathroom: 7'9 x 5'4 (2.36m x 1.63m)

OUTSIDE

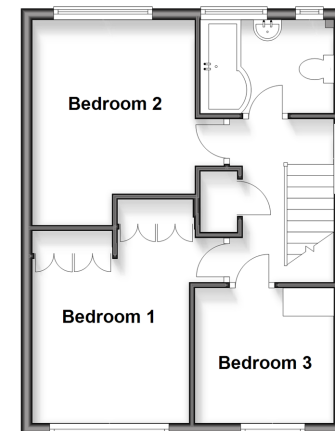
Driveway

Rear Garden

Ground Floor
Approx. 70.0 sq. metres (753.0 sq. feet)



First Floor
Approx. 38.6 sq. metres (415.9 sq. feet)



Call Paddock Wood - 01892 836877 ■ wardsofkent.co.uk

- Legal advice should be taken to verify fixtures/fittings, planning, alterations and/or lease details
- Appliances & services are untested, dimensions are approximate and floor plans are not to scale
- Through a Homewise Home For Life Plan people aged 60+ can secure this property for up to 50% less, by purchasing a Lifetime Lease



13627545/20251215/LF/BC