



Mansell Street, E1 £350,000

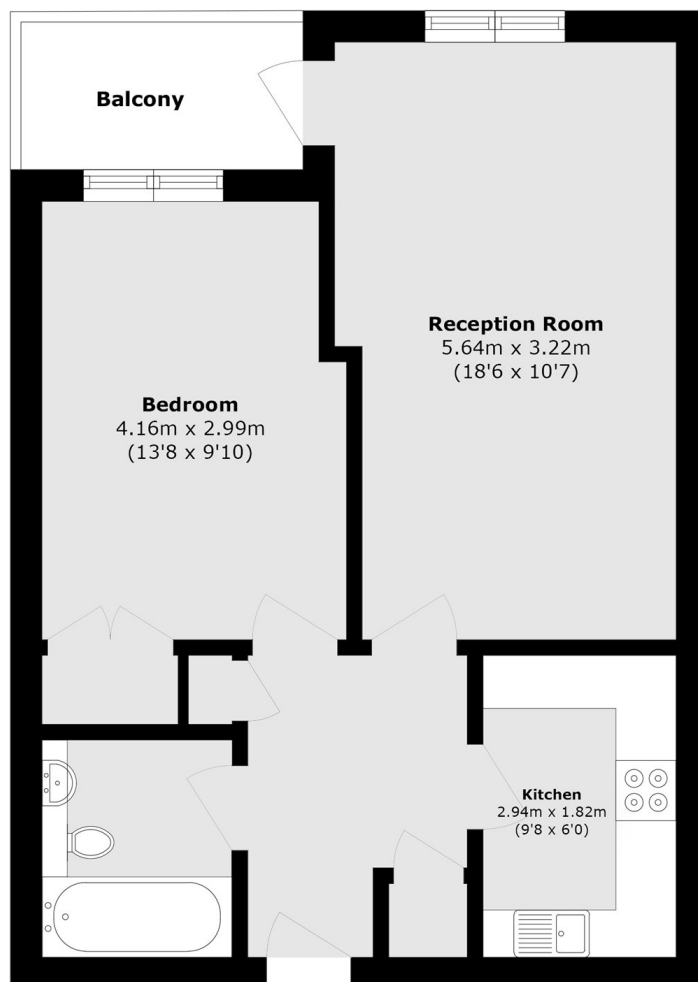
A bright, one double bedroom apartment. This property comprises a spacious reception room with access to a private balcony, a separate kitchen with integrated appliances, a double bedroom with built-in wardrobes, and a family bathroom that benefits from having both a bath and a shower. The property benefits from double glazing throughout, an on-site concierge and lift access.

Londinium Tower is very well located just 100 yards from the DLR at Tower Hill, and less than a quarter of a mile from the tubes at Aldgate, Aldgate East and Tower Hill, and the overland rail at Fenchurch Street. As such, a myriad of shops and restaurants await on your doorstep, as well as St Katherine's Dock and offices in the City.

Features

- Good Transport Links
- Covered Balcony
- Built-In Storage
- Wooden Flooring
- Lift Access
- Concierge

Mansell Street, London, E1



Total area (approx.): 47.5 sq. m (515.5 sq. ft)
Balcony area (approx.): 2.85 sq. m (30.6 sq. ft)