



City Walk, SE1

£2,500 Per week

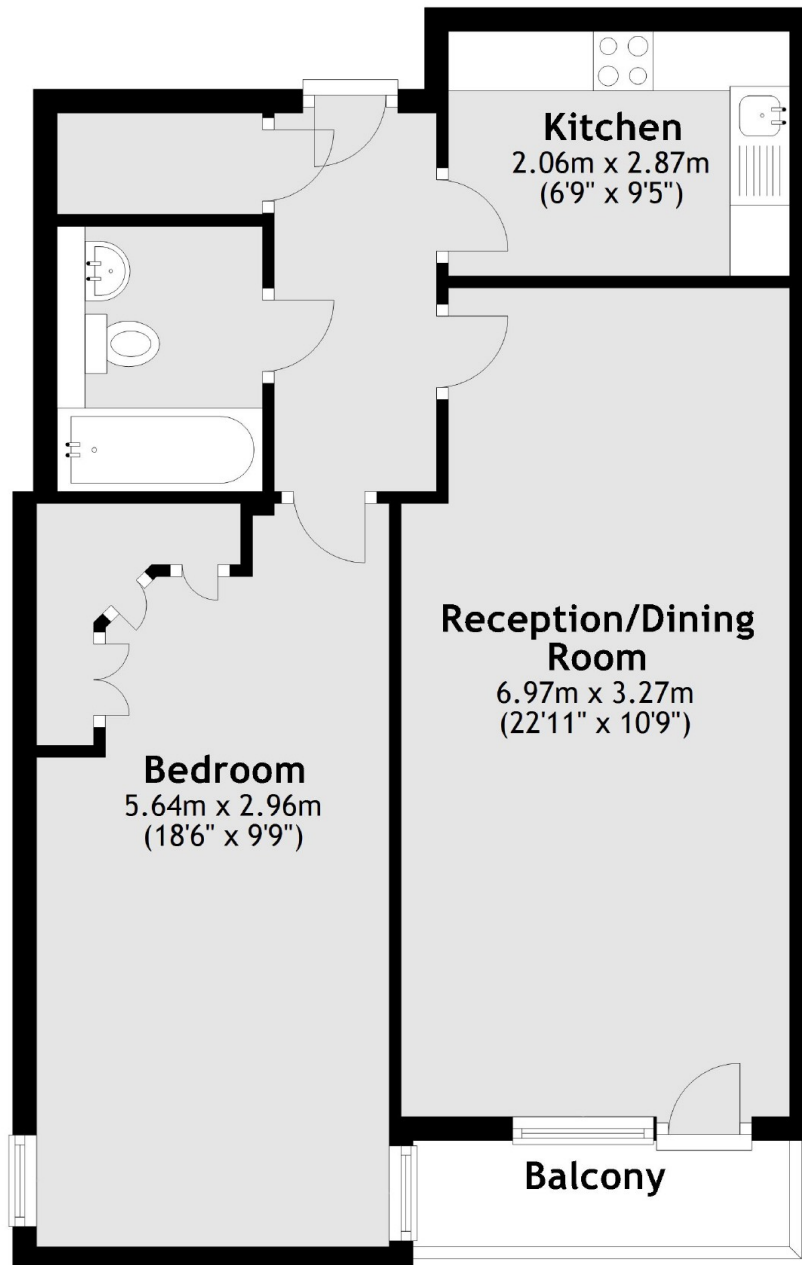
A larger than average one bedroom apartment. The property extends to over 625sqft, with a spacious living room and bedroom, a separate kitchen and a private balcony.

Perfectly positioned for access to both London Bridge and Borough Stations, with the ever popular Bermondsey Street just moments away.

Features

- One Bedroom
- Over 625sqft
- Private Balcony
- Close to Bermondsey Street
- Separate Kitchen

City Walk, London, SE1



Main area: Approx. 58.1 sq. metres (625.5 sq. feet)
Plus balconies, approx. 3.2 sq. metres (34.9 sq. feet)

Dexters

London Bridge
54 Borough High Street
London
SE1 1XL
Lettings
020 7650 5101

Energy Rating: C. We aim to make our particulars both accurate and reliable. However they are not guaranteed; nor do they form part of an offer or contract. If you require clarification on any points then please contact us, especially if you're traveling some distance to view. Please note that appliances and heating systems have not been tested and therefore no warranties can be given as to their good working order.

 **RICS** | Regulated
Estate Agent
and Letting Agent

dexters.co.uk