



Pinkmove

Skye Grove

Offers in the region of £250,000

- Modern kitchen/dining room
- Conservatory providing additional living space
- Ground floor WC
- Master bedroom with en-suite
- Family bathroom
- Low-maintenance enclosed rear garden
- Off-road parking
- EPC Rating: B



Pinkmove

01633 746088
team@pinkmove.co.uk



About the property

This beautifully presented three-bedroom home offers modern living throughout and is ideal for first-time buyers, growing families, or investors alike. Situated in a sought-after residential location, the property benefits from off-road parking and a well-proportioned layout across two floors.

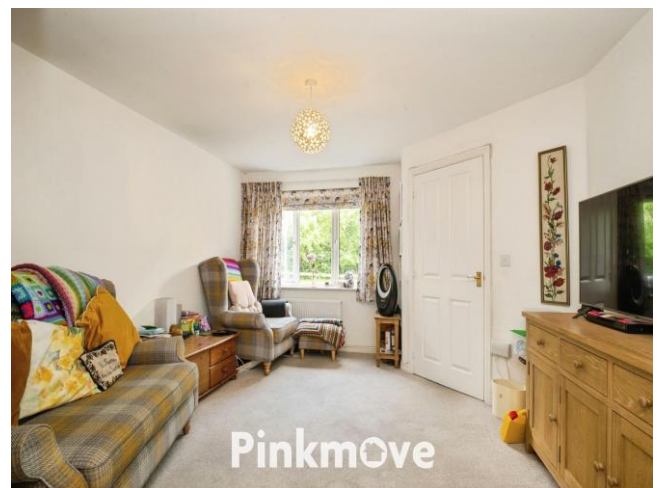
The property is entered via a welcoming hallway leading into a spacious and bright lounge, perfect for relaxing and entertaining. To the rear is a contemporary kitchen/dining room, fitted with a range of modern units and ample worktop space.

From here, double doors open into a light-filled conservatory, providing an additional reception space with pleasant views over the rear garden. A convenient cloakroom/WC completes the ground floor.

Upstairs, the property offers three bedrooms, including a generous master bedroom with the added benefit of an en-suite shower room. There are two further bedrooms, ideal for children, guests, or a home office, along with a modern family bathroom.

To the rear is a low-maintenance, fully enclosed garden, thoughtfully laid with extensive block paving, making it ideal for outdoor dining, entertaining, or relaxing. The garden benefits from a high degree of privacy with secure fencing, along with space for seating and potted plants, adding a touch of greenery. There is also side access via a gate and useful storage space for bins or garden equipment, making it both practical and family-friendly.

To the front, there is off-road parking.





Accommodation

Lounge

Kitchen/Dining Room

Conservatory

Bedroom 1

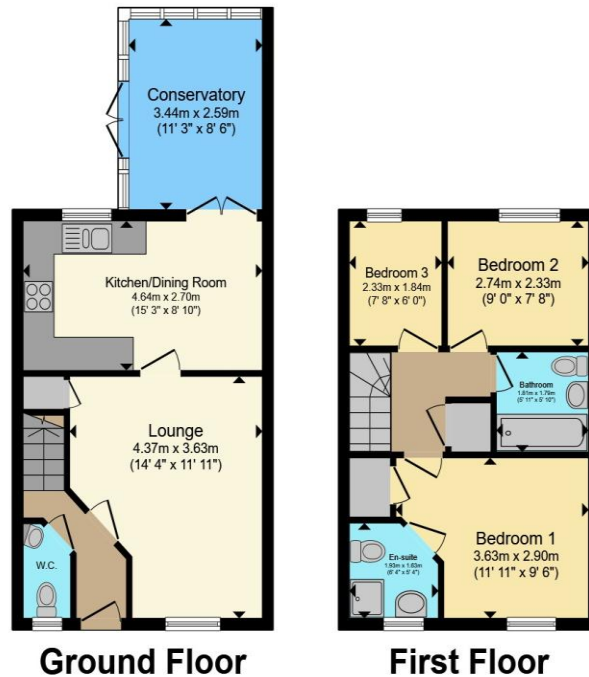
En-Suite

Bedroom 2

Bedroom 3

Bathroom

Floorplan



Total floor area 76.0 sq.m. (818 sq.ft.) approx

This floor plan is for illustrative purposes only. It is not drawn to scale. Any measurements, floor areas (including any total floor area), openings and orientation are approximate. No details are guaranteed, they cannot be relied upon for any purpose and they do not form part of any agreement. No liability is taken for any error, omission or misstatement. A party must rely upon its own inspection(s). Powered by www.localagent.com

Pinkmove

Important Information

Note while we endeavour to make our sales details accurate and reliable, if there is any point which is of particular interest to you, please contact the office and we will be pleased to confirm the position for you. We have not personally tested any apparatus, equipment, fixtures, fittings or services and cannot verify they are in working order or fit for their purposes. Nothing in these particulars is intended to indicate that carpets or curtains, furnishings or fittings, electrical goods (whether wired or not). Gas fires or light fittings or any other fixtures not expressly included form part of the property offered for sale. This computer generated Floorplan, if applicable, is intended as a general guide to the layout and design of the property. It is not to scale and should not be relied upon for dimensions. Tenure: We cannot confirm the tenure of the property as we have not had access to the legal documents. The buyer is advised to obtain verification from their solicitor or surveyor.

Peter Alan Limited is registered in England and Wales under company number 2073153, Registered Office is Cumbria House, 16-20 Hockliffe Street, Leighton Buzzard, Bedfordshire, LU7 1GN. VAT Registration Number is 500 2481 05. For activities relating to regulated mortgages and non-investment insurance contracts, Peter Alan Limited is an appointed representative of Connells Limited which is authorised and regulated by the Financial Conduct Authority. Connells Limited's Financial Services Register number is 302221. Most buy-to-let

