



Lichfield Grove | | London | N3 2JL

£850,000

PARK & VALE
sales | lettings | management

Lichfield Grove |
London | N3 2JL
£850,000

Park & Vale are delighted to offer you the opportunity to acquire this 4 bed Freehold property on the ever popular Lichfield Grove in Finchley Central.

Chain Free

Viewing highly recommended - call us now on 0207 112 8323

Visit www.ParkandVale.co.uk

Email info@parkandvale.co.uk

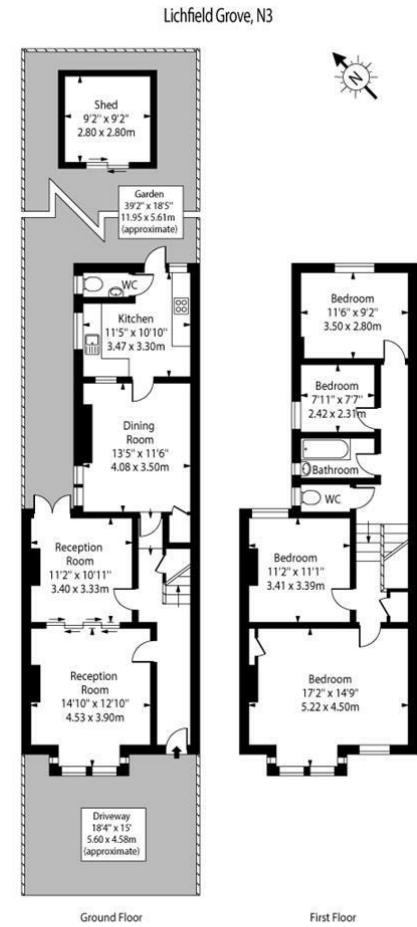
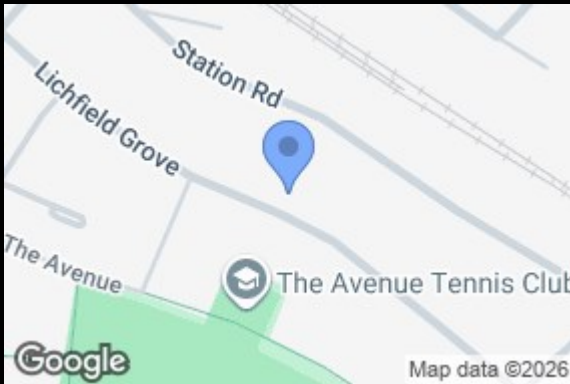
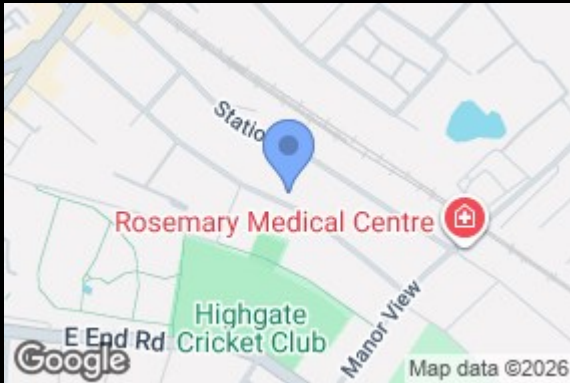
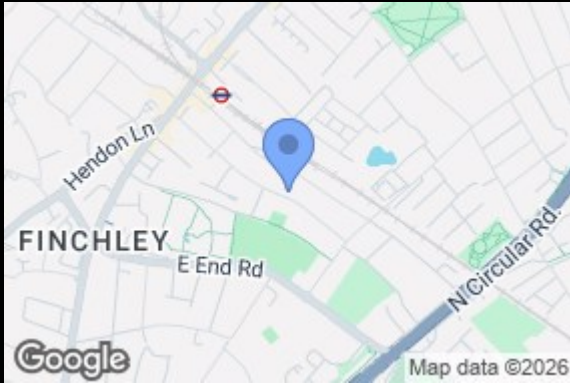
- Freehold
- Off street parking
- Development opportunity
- Finchley Central Underground









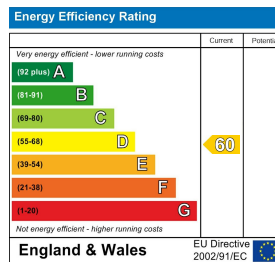


Approx Gross Internal Area 1462 Sq Ft - 135.82 Sq M

(Excluding Shed)

For Illustration Purposes Only - Not To Scale Floor Plan by www.nogaphotostudio.com Ref.No.52113

This floor plan should be used as a general outline for guidance only. Any intending purchaser or lessee should satisfy themselves by inspection, searches, enquiries and full survey as to the correctness of each statement. Any areas, measurements or distances quoted are approximate and should not be used to value a property or be the basis of any sale or let.



241 Maida Vale
London
W9 1QJ
0207 112 8323
info@parkandvale.co.uk