

F&P  
AGENCY

Jasmine Cottage

JASMINE COTTAGE, PINKNEYS GREEN



# Details

## PROPERTY PROFILE

---



Inside, the home has been transformed with a soft, sophisticated palette that creates an immediate sense of tranquility.

The dual-aspect kitchen/breakfast room is a culinary triumph, featuring a bespoke Mark Wilkinson kitchen and a classic Aga that serves as a warm focal point. A charming stable door opens directly to the rose garden, perfect for morning coffee.

A grand original canopied porch leads into a formal dining hall, complete with custom display cabinetry and a feature fireplace. For relaxation, the dual-aspect sitting room offers an open fire for winter evenings and direct access to the south-facing terrace for summer soirées.

Elegantly stepped up from the main lounge, is the garden room with double doors opening onto the south facing garden. This light-filled space features underfloor heating—offering a versatile sanctuary for work or leisure with panoramic garden views.

The first floor hosts four generous double bedrooms, each offering framed views of the gardens or protected National Trust land. These are served by a modern family wet room and bathroom, elegantly appointed by Fired Earth.

The annexe is a significant asset, this heated and broadband-connected space currently serves as a professional office and laundry suite. With its own storage and potential for further conversion into a bedroom and bathroom annexe (subject to planning), it is a versatile "bonus" space for modern living.

The exterior of Jasmine Cottage is a private oasis, secured behind wooden gates and a sprawling gravel driveway. The gardens wrap around the home in a tapestry of formal and informal designs. From the shade of a majestic weeping ash to the vibrant seasonal beds and manicured lawns, the grounds offer total privacy behind mature perimeter hedging. A broad, paved sun terrace provides the ultimate setting for alfresco dining.

- Close to Marlow, Cookham and Maidenhead
- Elizabeth Line from Maidenhead
- Excellent School Catchments including William Borlase
- Attractive and Extensive Character Cottage
- Bespoke Opportunity
- Mature gardens surrounding house
- Off road parking for multiple vehicles and gated access
- Large Annexe with home office; further garden outbuildings
- Views over National Trust Land
- Close to Cliveden and Hedsor House

# Location

---

## THE NEIGHBOURHOOD

---

Positioned in a premier semi-rural setting, Jasmine Cottage offers the "best of both worlds."

**Connectivity:** Ideal for commuters, the Elizabeth Line at Maidenhead provides swift access to Central London, while the M4 and M40 are within easy reach.

**Surroundings:** You are steps away from National Trust trails and Pinkneys Green. The boutique shops and Michelin-starred dining of Marlow (3.2 miles) and the riverside charm of Cookham (3.7 miles) are moments away.

**Leisure:** From rowing at Dorney Lake to golf at Winter Hill and racing at Ascot, the area is a hub for world-class sporting and recreational pursuits.

### Schools

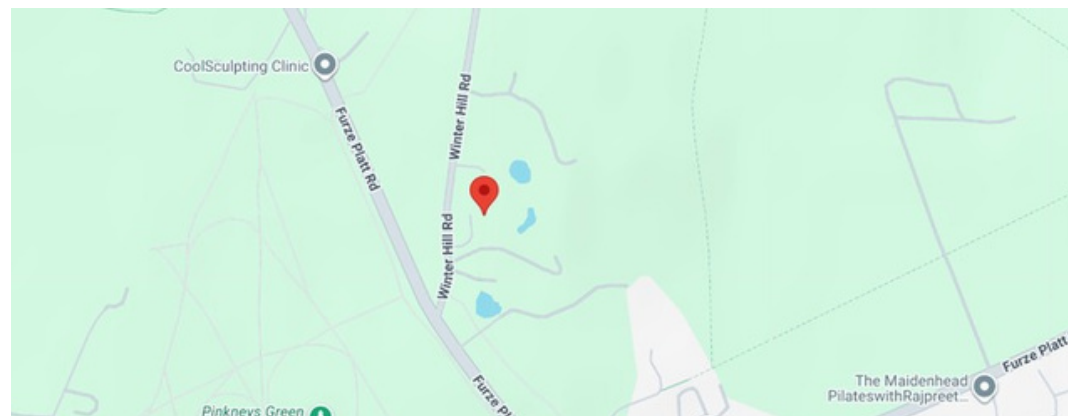
**Primary Schools** - Courthouse Junior School; Alwyn Infant School; St Nicolas' Church of England Combined School – Primary school in Taplow; St Edmund Campion Catholic Primary School and Nursery; All Saints Church of England Junior School; Furze Platt Infant School / Furze Platt Junior School.

**Secondary Schools** - Newlands Girls' School ; Altwood Church of England School; Furze Platt Senior School; Cox Green School; Desborough College

**Independent & Other Options (Local Area)**- Claires Court Schools – Independent school

**Grammar & Wider Options (for Reference)** - Sir William Borlase Grammar School - (Marlow area)

Jasmine Cottage,  
Winter Hill Road,  
Maidenhead,  
Berkshire,  
SL6 6NS





JASMINE COTTAGE, PINKNEYS GREEN

JASMINE COTTAGE, PINKNEYS GREEN





JASMINE COTTAGE, PINKNEYS GREEN

JASMINE COTTAGE, PINKNEYS GREEN





JASMINE COTTAGE, PINKNEYS GREEN

JASMINE COTTAGE, PINKNEYS GREEN





JASMINE COTTAGE, PINKNEYS GREEN

JASMINE COTTAGE, PINKNEYS GREEN





JASMINE COTTAGE, PINKNEYS GREEN

JASMINE COTTAGE, PINKNEYS GREEN





JASMINE COTTAGE, PINKNEYS GREEN

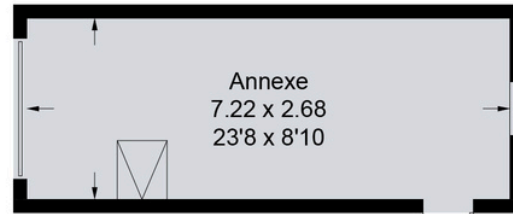
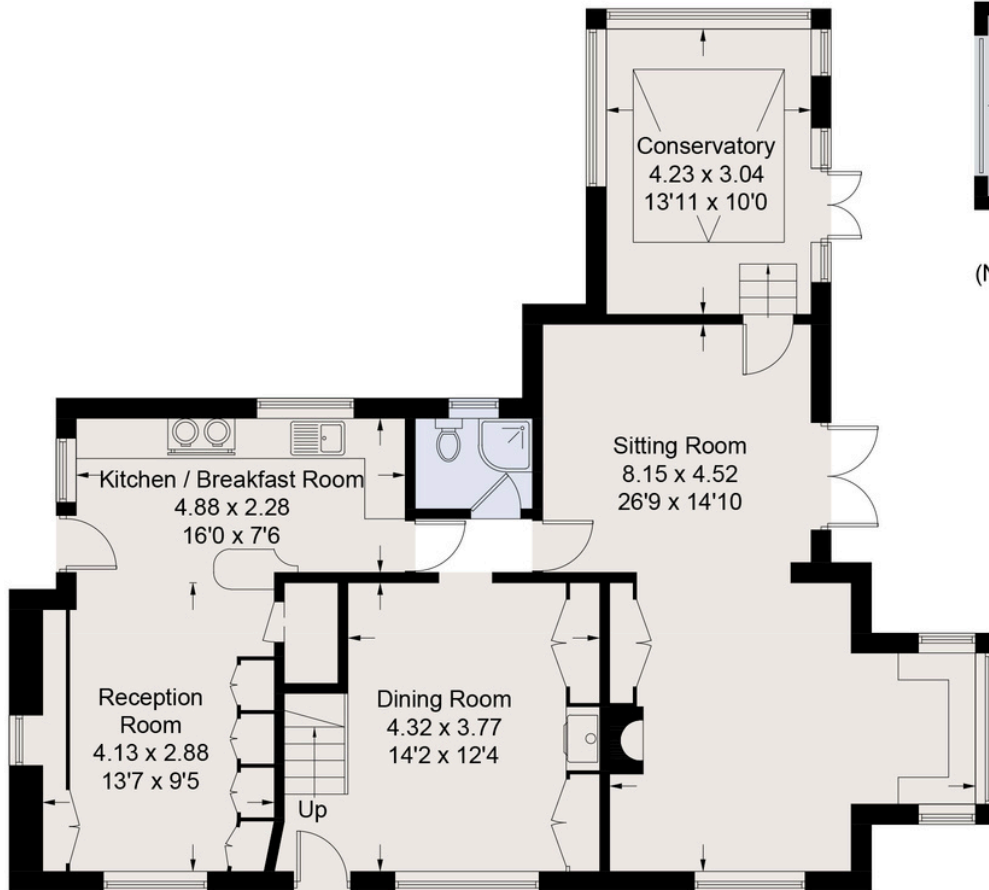
JASMINE COTTAGE, PINKNEYS GREEN



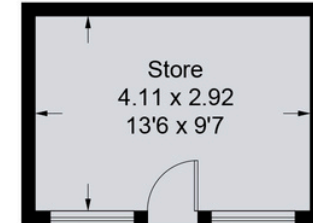
# Jasmine Cottage, Winter Hill Road



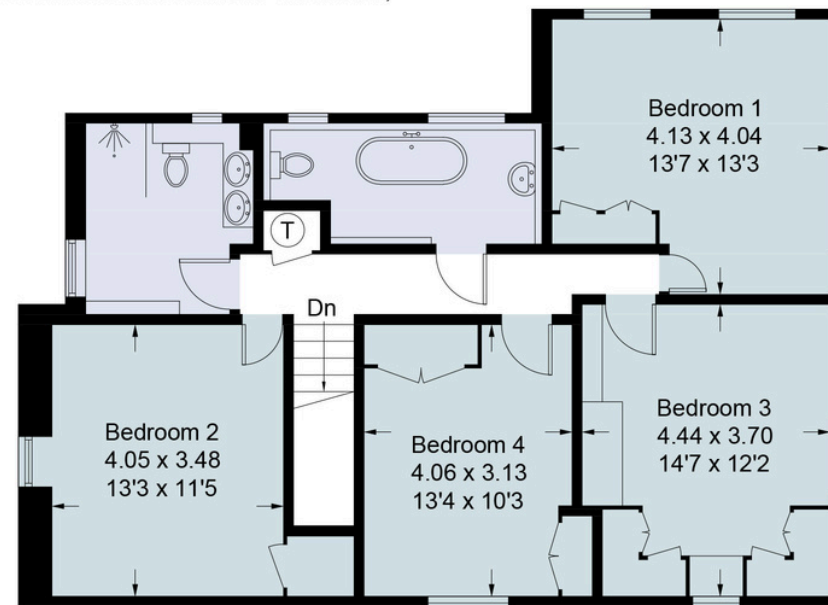
Approximate Gross Internal Area = 221.7 sq m / 2386 sq ft



(Not Shown In Actual Location / Orientation)



(Not Shown In Actual Location / Orientation)



First Floor

This plan is for layout guidance only. Not drawn to scale unless stated. Windows and door openings are approximate. Whilst every care is taken in the preparation of this plan, please check all dimensions, shapes and compass bearings before making any decisions reliant upon them.

© CJ Property Marketing Ltd Produced for F&P Agency



JASMINE COTTAGE, PINKNEYS GREEN

# Your Managing Partner

F&P Agency is transforming the way property is sold.

We're committed to providing exceptional service from start to sale, to make your home buying or selling experience as smooth and successful as possible.

# Team



Dane Spelina  
Managing Partner, Maidenhead Region

---

F & P AGENCY

---

☎ 01628 968989

🔗 [www.fandpagency.com](http://www.fandpagency.com)

✉ [dane@fandpagency.com](mailto:dane@fandpagency.com)



SCAN TO BOOK A VIEWING

# Contact Us Today

F & P AGENCY

F&P  
AGENCY