



FOR SALE  
jordan fishwick  
01663 767878  
www.jordanfishwick.co.uk

*jordan fishwick*

Lime Avenue New Mills High Peak



## Lime Avenue New Mills High Peak SK22 4HT

£215,000



### The Property

Located on a small cul-de-sac within an established and popular residential area in New Mills, a two double mid terraced home. Private front and rear gardens, potential to update and improve, pvc double glazing and gas central heating. Comprising: entrance hall, living room, separate dining room, kitchen, two first floor bedrooms (smallest 11'8 x 9'2) and a bathroom with white suite. Useful outdoor brick store and ideal for first time buyers. Viewing highly recommended. No onward chain!



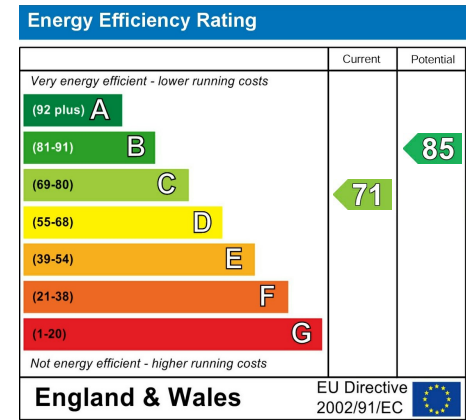
- Two Double Bedrooms
- Good Sized Enclosed Rear Garden with Patio, Lawn and Pond
- Two Reception Rooms
- Convenient Location for New Mills Amenities and The Sett Valley Trail
- Garden Fronted
- Cul de Sac Location
- NO ONWARD CHAIN

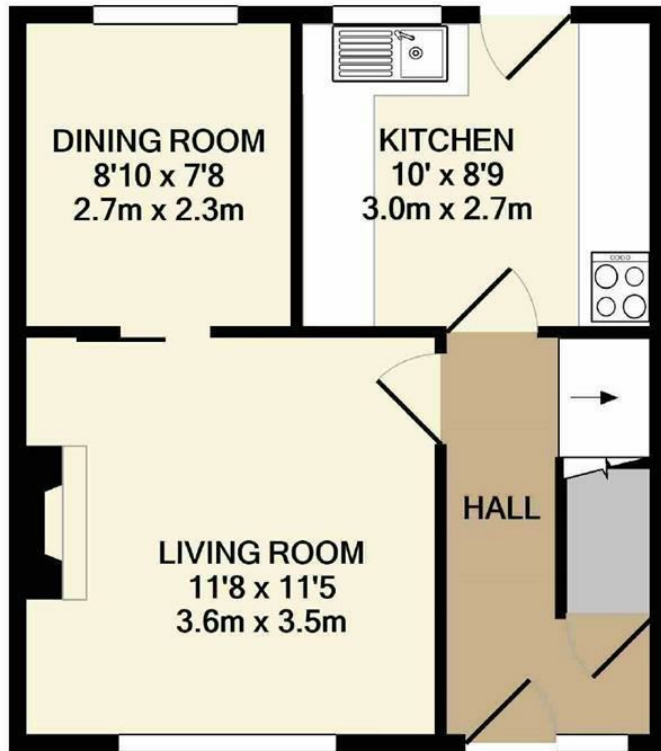
**Postcode** SK22 4HT

**EPC Rating** C

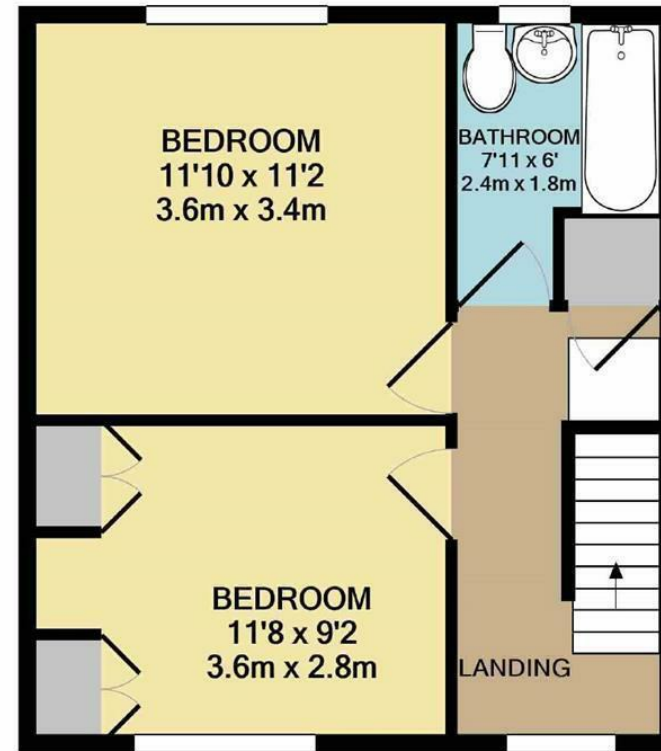
**Local Authority** High Peak

**Council Tax** B





GROUND FLOOR



1ST FLOOR

Whilst every attempt has been made to ensure the accuracy of the floor plan contained here, measurements of doors, windows, rooms and any other items are approximate and no responsibility is taken for any error, omission, or mis-statement. This plan is for illustrative purposes only and should be used as such by any prospective purchaser. The services, systems and appliances shown have not been tested and no guarantee as to their operability or efficiency can be given  
 Made with Metropix ©2021



These particulars are believed to be accurate but they are not guaranteed and do not form a contract. Neither Jordan Fishwick nor the vendor or lessor accept any responsibility in respect of these particulars, which are not intended to be statements or representations of fact and any intending purchaser or lessee must satisfy himself by inspection or otherwise as to the correctness of each of the statements contained in these particulars. Any floorplans on this brochure are for illustrative purposes only and are not necessarily to scale.

Offices at: Chorlton, Didsbury, Disley, Hale, Glossop, Macclesfield, Manchester Deansgate, Manchester Whitworth Street, New Mills, Sale, Wilmslow and Withington

14 Market St, Disley, Cheshire, Stockport SK12 2AA

01663 767878

disley@jordanfishwick.co.uk  
 www.jordanfishwick.co.uk