



Meadow Lane , Westbury

£190,000



Key Features

- Conservatory
- Dining Room
- Driveway
- Private Rear Garden
- EPC rating C
- Freehold





Located on Meadow Lane in Westbury, this well-presented two-bedroom home offers a comfortable and practical living space, ideal for investors and first time buyers .

making it a great opportunity for those looking to expand their rental portfolio or look for their first home .

Inside, the home features two well-proportioned bedrooms, with the master benefiting from built-in wardrobes.

The layout flows nicely from the entrance porch into a welcoming lounge, which leads into the open-plan dining room and through to the kitchen.

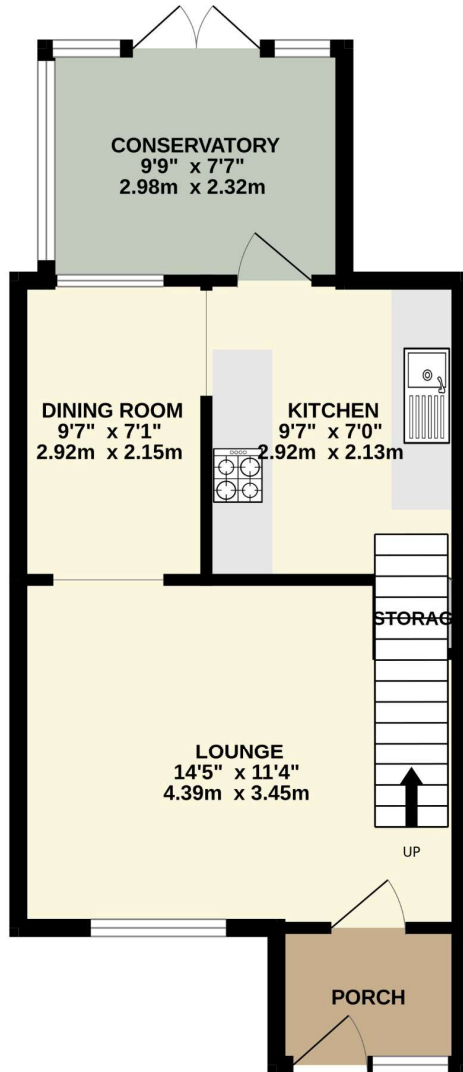
Additional living space is provided by a bright conservatory, which opens out to a generously sized and private rear garden - perfect for relaxing or entertaining.

At the front of the property, there is off-street parking available for one vehicle.

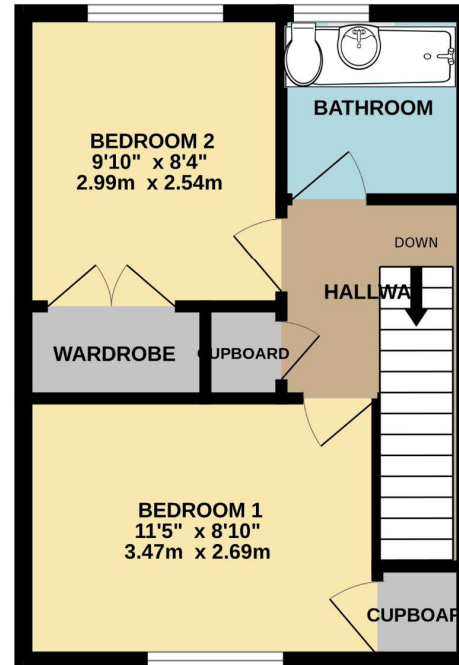
The bathroom, while compact, is well-equipped and functional.

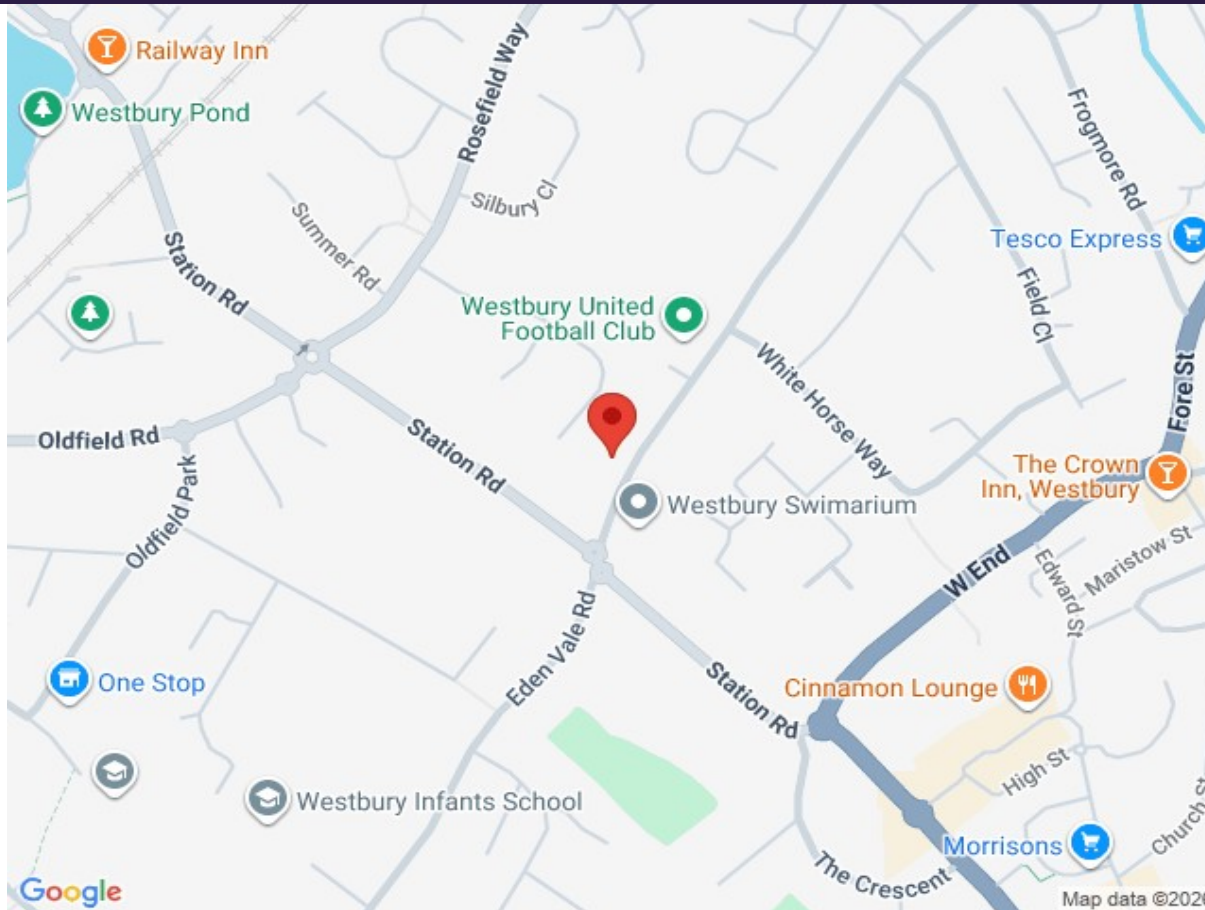


GROUND FLOOR
410 sq.ft. (38.1 sq.m.) approx.



1ST FLOOR
308 sq.ft. (28.6 sq.m.) approx.





Energy rating and score

This property's energy rating is C. It has the potential to be B.

See how to improve this property's energy efficiency.



The graph shows this property's current and potential energy rating.



01985 220 290

warminster@northwooduk.com