



Price

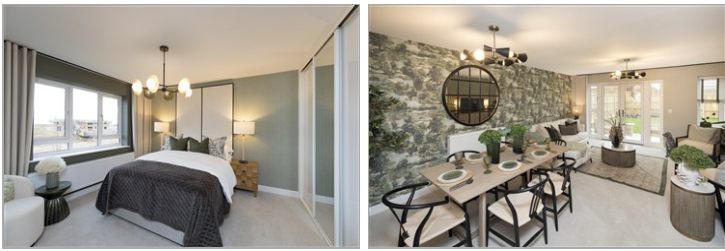
£475,000

Freehold

4x  2x  1x 

**The Wilmington,
Meadowbridge, Osborne
Gardens, Herne Bay,
Kent, CT6**

Wards
Helping you move forwards



Main features

- Bespoke kitchen with integrated Bosch appliances
- Flooring included throughout
- Turf to the rear garden included
- Tiling to bathrooms and en-suites included
- Air Source Heat Pump
- EV Charging points
- Open green spaces

Accommodation

GROUND FLOOR

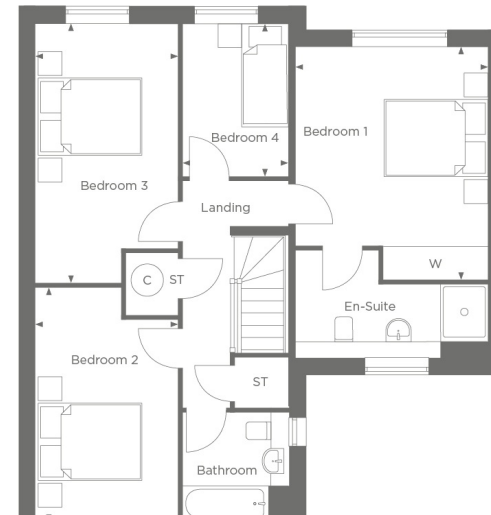
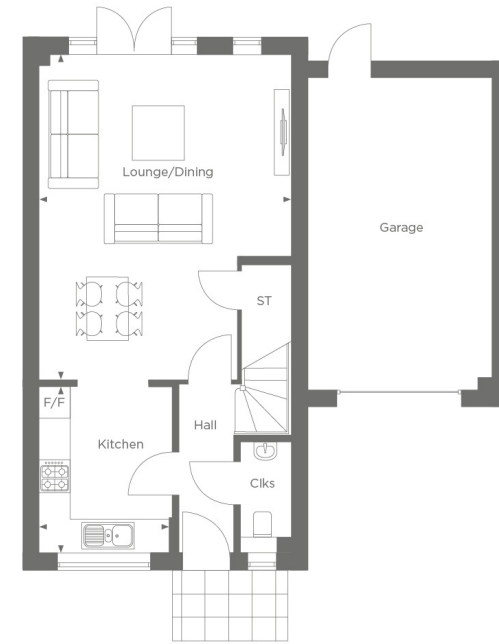
- Entrance Hall
- Lounge/Dining: 20'4 x 15'9 (6.20m x 4.80m)
- Kitchen: 10'6 x 8'3 (3.20m x 2.52m)
- Cloakroom

FIRST FLOOR

- Landing
- Bedroom 1: 14'6 x 12'1 (4.42m x 3.69m)
- En-Suite Shower Room
- Bedroom 2: 14'9 x 8'10 (4.50m x 2.69m)
- Bedroom 3: 16'2 x 8'10 (4.93m x 2.69m)
- Bedroom 4: 9'7 x 6'8 (2.92m x 2.03m)
- Bathroom

OUTSIDE

- Front Garden
- Rear Garden
- Garage
- Off Road Parking



Call Herne Bay - 01227 361226 ■ wardsofkent.co.uk

- If buying to let, the energy rating will need to be improved to at least 'E' rating before you can let the property
- Legal advice should be taken to verify fixtures/fittings, planning, alterations and/or lease details
- Appliances & services are untested, dimensions are approximate and floor plans are not to scale



11239070/20260302/DP/GG