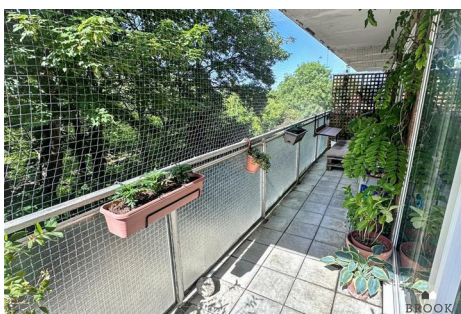




BROOK GAMBLE



17 Kings Avenue
, Eastbourne, BN21 2PE

Brook Gamble offer to the market this good sized, well presented, 2 bedroom ground floor purpose built apartment on the Old Town / Upperton borders. The property enjoys the benefits of 2 good sized Bedrooms as well as a large Lounge which leads onto the balcony. Further benefits include electric radiators and uPVC double glazing as well as a garage to the rear. Being sold with a low lease and share of the freehold, viewing is considered essential. Sole Agents.

£199,950

17 Kings Avenue

, Eastbourne, BN21 2PE



- Sought After Kings Avenue
- Well Presented
- 2 Double Bedrooms
- Balcony
- Garage
- Share Of Freehold
- Long Lease
- Sole Agents

Communal Entrance

Entrance Hall

Lounge

16'2 x 12'5 (4.93m x 3.78m)

Kitchen

12'6 x 11'10 (3.81m x 3.61m)

Bedroom 1

16'1 x 12'1 (4.90m x 3.68m)

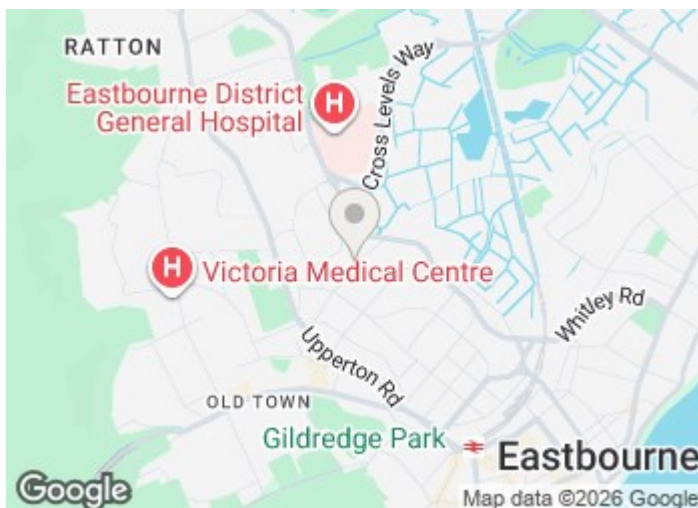
Bedroom 2

12'6 x 8'10 (3.81m x 2.69m)

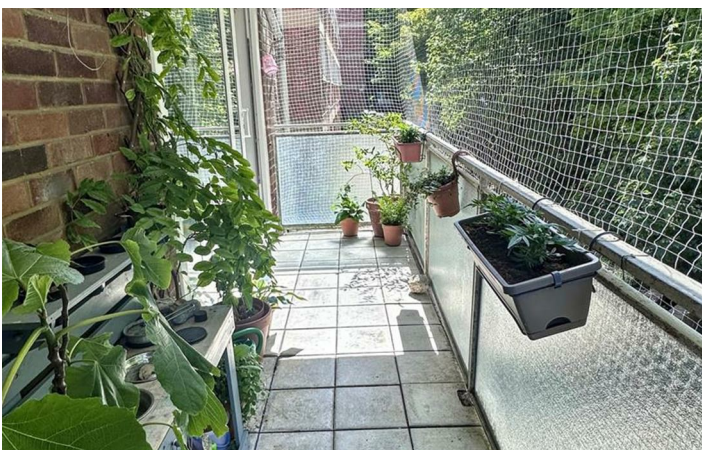
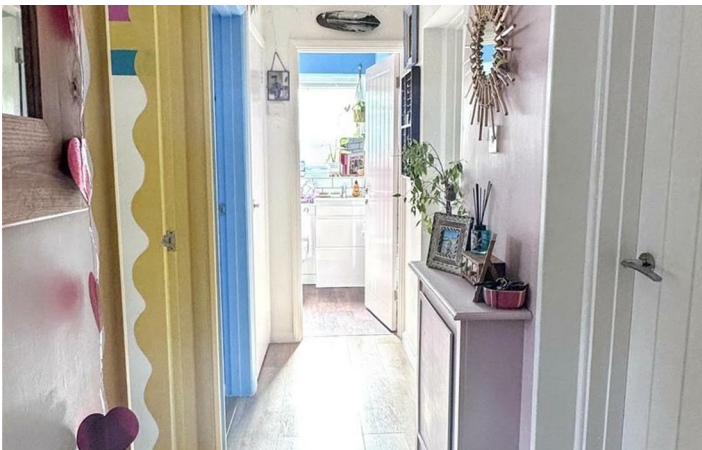
Bathroom

Garage

Other Information



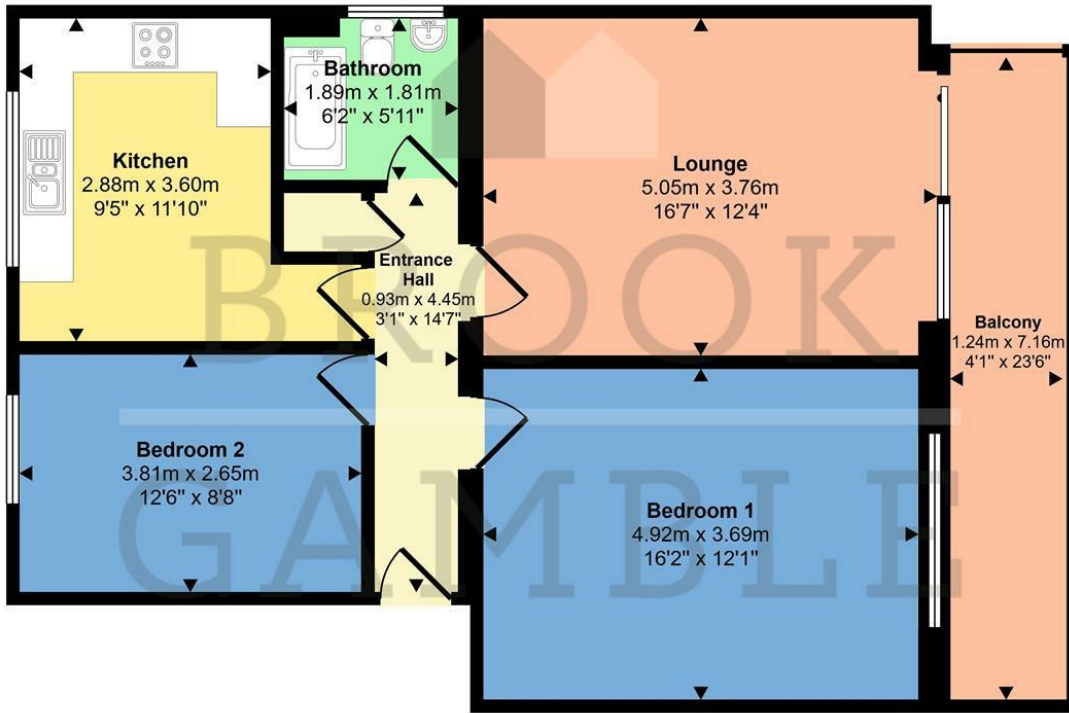
Directions





Floor Plan

Approx Gross Internal Area
71 sq m / 764 sq ft



Floorplan

This floorplan is only for illustrative purposes and is not to scale. Measurements of rooms, doors, windows, and any items are approximate and no responsibility is taken for any error, omission or mis-statement. Icons of items such as bathroom suites are representations only and may not look like the real items. Made with Made Snappy 360.

These particulars, whilst believed to be accurate are set out as a general outline only for guidance and do not constitute any part of an offer or contract. Intending purchasers should not rely on them as statements of representation of fact, but must satisfy themselves by inspection or otherwise as to their accuracy. No person in this firm's employment has the authority to make or give any representation or warranty in respect of the property.

