



Connells

Connells

Birmingham New Road
Bilston



Property Description

The Award Winning Connells Wolverhampton branch is proud to bring to the market this deceptively spacious three bedroom detached family home situated on the popular Birmingham New Road boasts NO ONWARD CHAIN. Viewings are highly recommended, call Connells today to book your viewing.

The property comprises of entrance hall leading to a spacious lounge with dining area and well appointed kitchen. Heading upstairs you will find three bedrooms and shower room. Outside to the front is a block paved frontage and garden to rear with access to the garage to rear.

The Location & Area

Set to the south east of Wolverhampton City Centre with easy access to Birmingham New Road and Black Country route. The property is situated on in a service road with good transport links and easy access to local amenities.

Approach

Set back from the roadside with a block paved frontage leading to the main accommodation and side gate.

Entrance Hall

Stairs rising to first floor, ceiling light point, double glazed sliding door to lounge.

Lounge

Double glazed window to front, two ceiling light points, central heating radiator, double glazed sliding door to entrance hall, door to kitchen.

Kitchen

Matching wall and base units with stainless steel sink and drainer with mixer tap, integrated oven, plumbing for washing machine, ceiling light point, storage cupboard, two double glazed windows to rear, doors to lounge and garden.



First Floor Landing

Loft access, ceiling light point, doors to various rooms.

Bedroom One

Double glazed window to front, central heating radiator, ceiling light point.

Bedroom Two

Double glazed window to rear, central heating radiator, ceiling light point.

Bedroom Three

Double glazed window to front, storage cupboard housing wall mounted boiler, central heating radiator, ceiling light point.

Shower Room

Shower cubicle, low flush wc, wash hand basin, part tiled walls, ceiling light point, heated towel rail, double glazed window to rear.

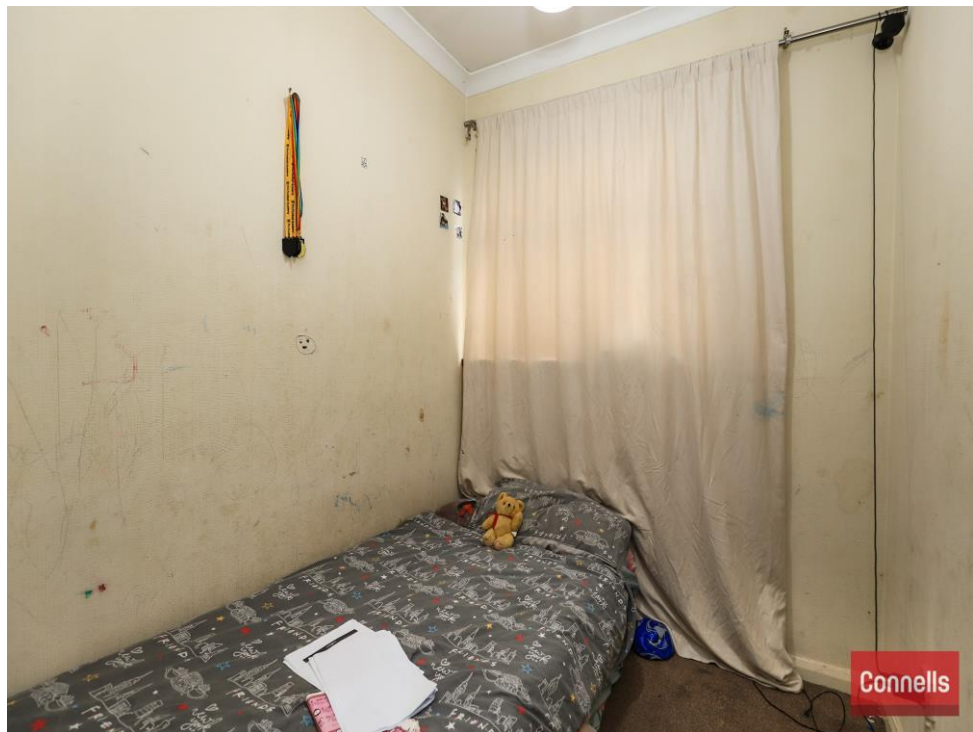
Outside Rear

Paved patio area, steps up to a tiered lawn, outside tap, shrubs, side gate to front, gates to rear leading to garage.

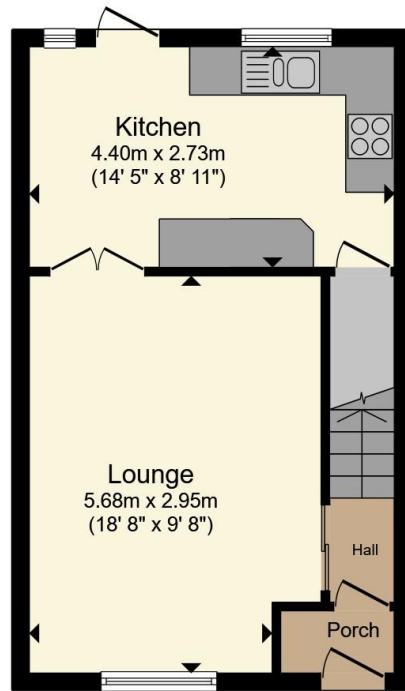
Garage

Up and over door.

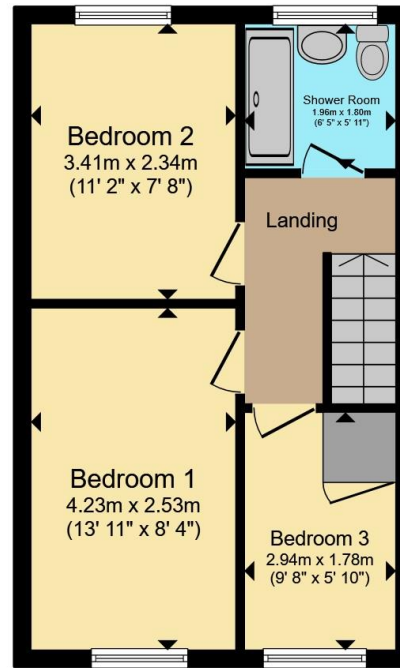




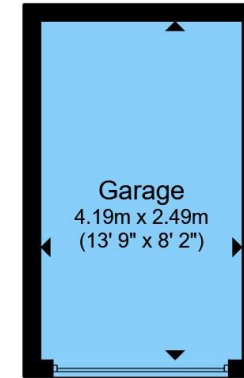




Ground Floor



First Floor



Garage

Total floor area 80.1 m² (862 sq.ft.) approx

This floor plan is for illustrative purposes only. It is not drawn to scale. Any measurements, floor areas (including any total floor area), openings and orientation are approximate. No details are guaranteed, they cannot be relied upon for any purpose and they do not form part of any agreement. No liability is taken for any error, omission or misstatement. A party must rely upon its own inspection(s). Powered by www.propertybox.io

Connells

To view this property please contact Connells on

T 01902 710 170
E wolverhampton@connells.co.uk

81-83 Darlington Street
WOLVERHAMPTON WV1 4EX

EPC Rating: D Council Tax
Band: C

Tenure: Freehold

view this property online connells.co.uk/Property/WVH334178



1. MONEY LAUNDERING REGULATIONS Intending purchasers will be asked to produce identification documentation at a later stage and we would ask for your co-operation in order that there will be no delay in agreeing the sale. 2. These particulars do not constitute part or all of an offer or contract. 3. The measurements indicated are supplied for guidance only and as such must be considered incorrect. Potential buyers are advised to recheck measurements before committing to any expense. 4. We have not tested any apparatus, equipment, fixtures, fittings or services and it is in the buyers interest to check the working condition of any appliances.

Connells Residential is registered in England and Wales under company number 1489613, Registered Office is Cumbria House, 16-20 Hockliffe Street, Leighton Buzzard, Bedfordshire, LU7 1GN. VAT Registration Number is 500 2481 05.

See all our properties at www.connells.co.uk | www.rightmove.co.uk | www.zoopla.co.uk

Property Ref: WVH334178 - 0002