

52 & 52A Norfolk Street, King's Lynn

£99,995

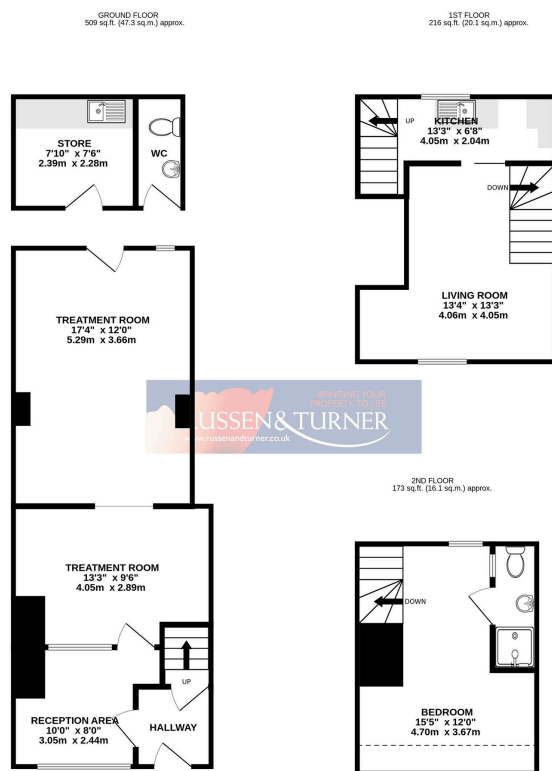
 1  1  2



TOWN CENTRE LOCATION! Set over three floors, this Grade II Listed, mid terraced property offers great investment potential. The ground floor boasts a shop space, with multiple rooms, that looks out onto Norfolk Street, floors two and three consist of a one bedroom maisonette.

Key Features

- Ground Floor Shop - Fronts onto Norfolk Street
- Grade II Listed
- Investment Potential
- Courtyard Garden
- Town Centre Location
- One Bedroom Maisonette
- Freehold Property
- Arranged over Three Floors
- Store Room at Rear
- Close to Train Station



TOTAL FLOOR AREA: 899 sq.ft. (83.5 sq.m.) approx.

Whilst every attempt has been made to ensure the accuracy of the floorplan contained here, measurements of doors, windows, rooms and any other items, are approximate and no responsibility is taken for any error, omission or mis-statement. This plan is for illustrative purposes only and should be used as such by any prospective purchaser. The services, systems and appliances shown have not been tested and no guarantee as to their operability or efficiency can be given.
Made with Metropix 62024