



**Wilcot Close, Watford, WD19**

Watford

**£945,000**



**Bedrooms: 4**

**Bathrooms: 1**

**Receptions: 3**

An extended bright and spacious FOUR BEDROOM THREE RECEPTION ROOM DETACHED FAMILY situated in a private gated road in the heart of Bushey/Watford, conveniently located and within walking distance to all local shopping and transport facilities including Bushey mainline station. The Property is being offered in good decorative order and benefits from: Double Glazed Windows, Gas Fired Heating To Radiators, Guest Cloakroom, Spacious Entrance Hall, Living Room, Dining Room, Conservatory, Kitchen/Breakfast Room, Utility Room. Four Bedrooms, Bathroom, Secluded Rear Garden With Brick Built Outhouse With Bi Fold Door Leading To Garden, Off Street Parking.

**CHAIN FREE**





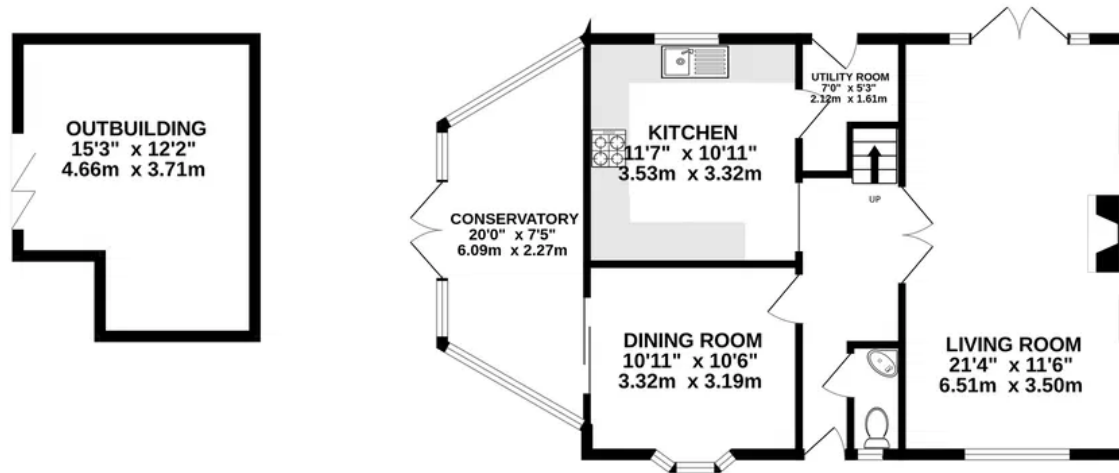




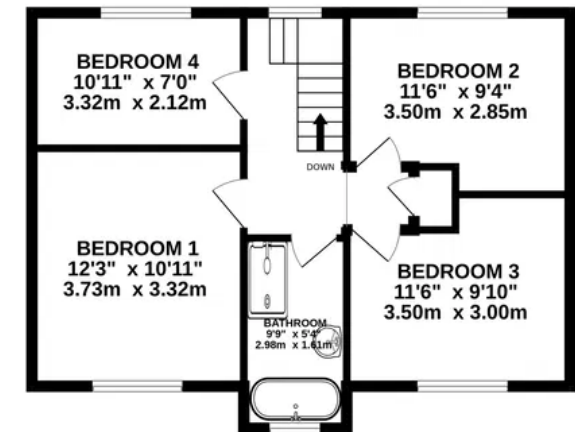




**GROUND FLOOR**  
871 sq.ft. (81.0 sq.m.) approx.



**1ST FLOOR**  
531 sq.ft. (49.4 sq.m.) approx.



**TOTAL FLOOR AREA : 1403 sq.ft. (130.3 sq.m.) approx.**

Whilst every attempt has been made to ensure the accuracy of the floorplan contained here, measurements of doors, windows, rooms and any other items are approximate and no responsibility is taken for any error, omission or mis-statement. This plan is for illustrative purposes only and should be used as such by any prospective purchaser. The services, systems and appliances shown have not been tested and no guarantee as to their operability or efficiency can be given.

Made with Metropix ©2026

**Scott Bernstein**

**59 High Road Bushey Heath Herts WD23 1EE**

**020 8950 7777**

**scott.b@benjaminstevens.co.uk**

**<https://benjaminstevens.co.uk>**