



## 6 Downfield Close

West Derby, Liverpool, L12 2BN

**Offers over £1,250,000**

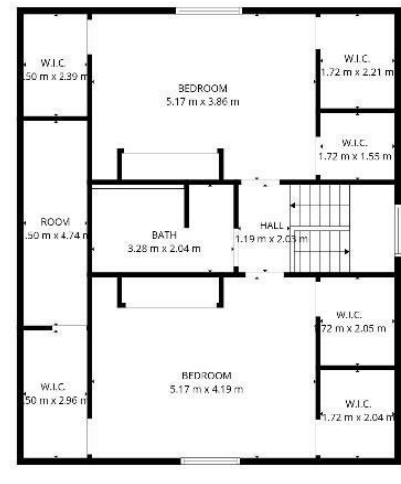
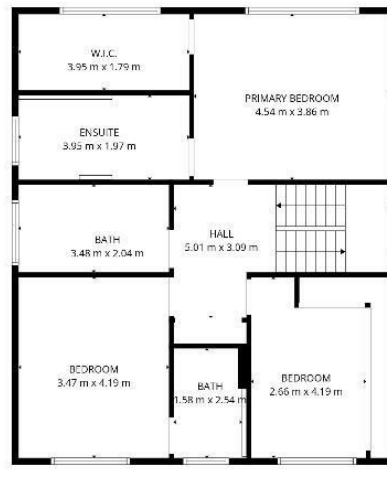
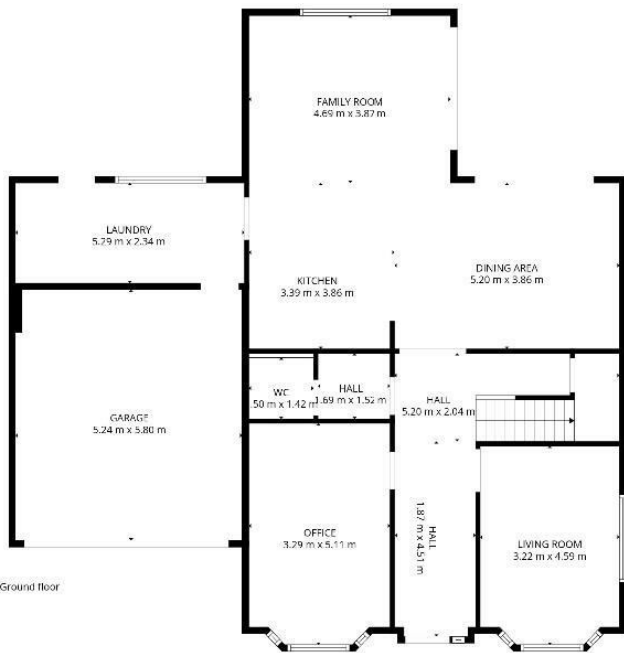
 5  4  4  B



# 6 Downfield Close

West Derby, Liverpool, L12 2BN

Offers over £1,250,000



1st floor

2nd floor

**TOTAL: 276 m<sup>2</sup>**

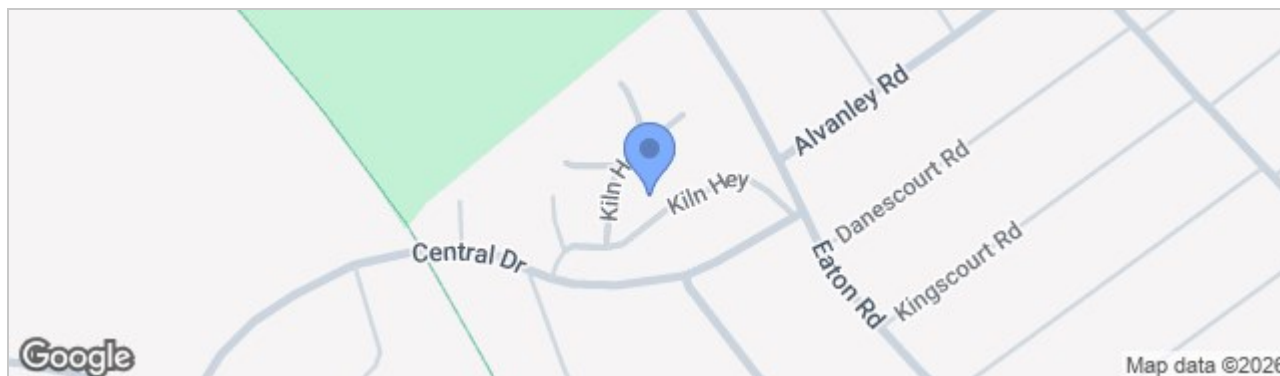
Ground floor: 121 m<sup>2</sup>, 1st floor: 88 m<sup>2</sup>, 2nd floor: 67 m<sup>2</sup>

EXCLUDED AREAS: GARAGE: 30 m<sup>2</sup>, LOW CEILING: 17 m<sup>2</sup>, ROOM: 3 m<sup>2</sup>, WALLS: 25 m<sup>2</sup>

FLOOR PLAN CREATED BY CUBICASA APP. MEASUREMENTS DEEMED HIGHLY RELIABLE BUT NOT GUARANTEED.



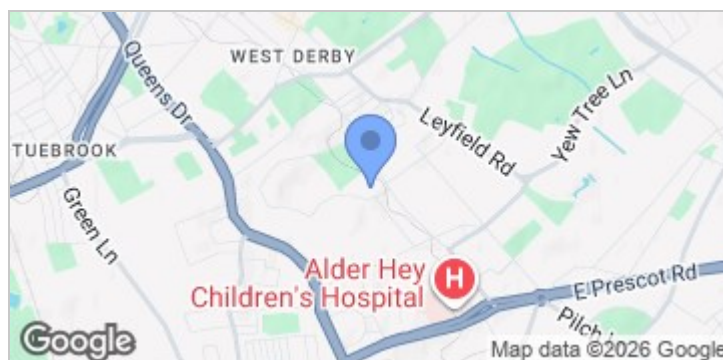
## Road Map



## Hybrid Map



## Terrain Map



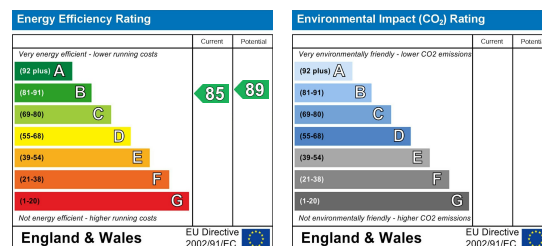
- **SITUATED ON A LARGE GATED CORNER PLOT**
- **PRESTIGIOUS WEST DERBY LOCATION**
- **STUNNING DETACHED FAMILY HOME**
- **FIVE DOUBLE BEDROOMS**
- **FOUR BATHROOMS**
- **INCREDIBLE OPEN PLAN KITCHEN DINING & FAMILY ROOM**
- **BEAUTIFULLY LANDSCAED & SECLUDED GARDENS**
- **EXCELLENT LOCAL SCHOOLS**
- **DOUBLE GARAGE & OFF ROAD PARKING FOR SEVERAL CARS**
- **CHECK STAMP DUTY CALCULATOR FOR AFFORDABILITY**

## Viewing

Please contact our Allerton Office on 01516013003 if you wish to arrange a viewing appointment for this property or require further information.

These particulars, whilst believed to be accurate are set out as a general outline only for guidance and do not constitute any part of an offer or contract. Intending purchasers should not rely on them as statements of representation of fact, but must satisfy themselves by inspection or otherwise as to their accuracy. No person in this firm's employment has the authority to make or give any representation or warranty in respect of the property.

## Energy Efficiency Graph



82 Coronation Road, Crosby, Liverpool L23 5RH

Tel: 0151 909 3003  
Email: crosby@abode.group.co.uk  
Web: www.abode-group.co.uk

6 Allerton Road, Mossley Hill, Liverpool, L18 1LN

Tel: 0151 601 3003  
Email: allerton@abode-group.co.uk  
Web: www.abode-group.co.uk

2 Chapel Lane, Formby, Liverpool, L37 4DU

Tel: 01704 827 402  
Email: formby@abode-group.co.uk  
Web: www.abode-group.co.uk