



GUIDE PRICE

**£800,000**

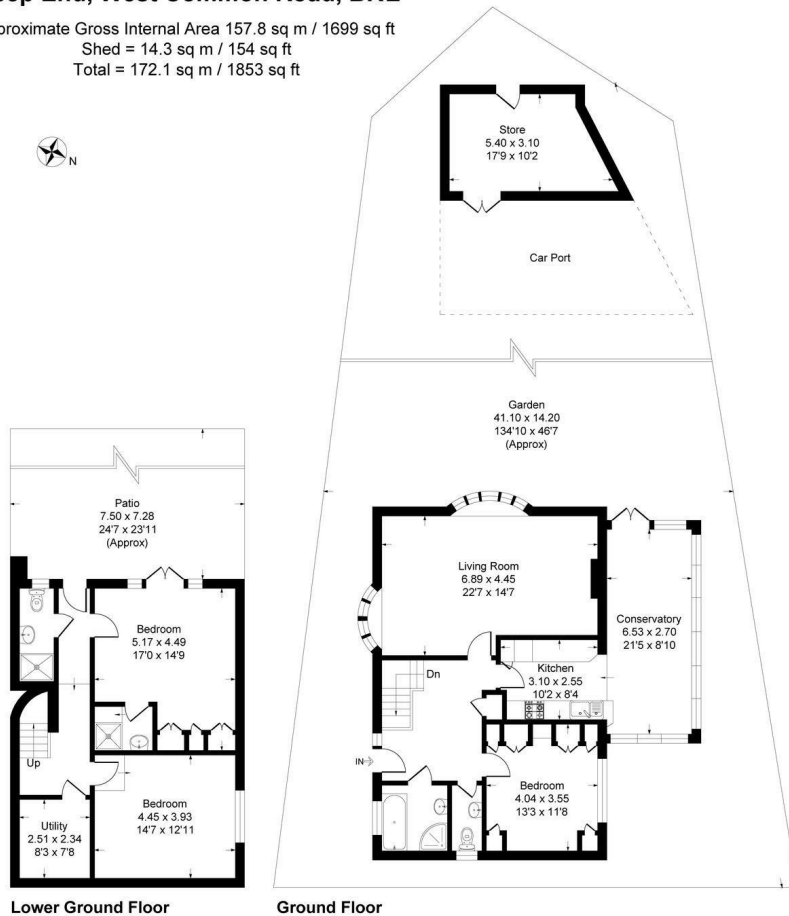
**West Common Road**

Hayes, BR2 7BY

EPC RATING: COUNCIL TAX BAND: E

**Deep End, West Common Road, BR2**

Approximate Gross Internal Area 157.8 sq m / 1699 sq ft  
 Shed = 14.3 sq m / 154 sq ft  
 Total = 172.1 sq m / 1853 sq ft



This plan is for layout guidance only. Not drawn to scale unless stated. Windows and door openings are approximate. Whilst every care is taken in the preparation of this plan, please check all dimensions, shapes and compass bearings before making any decisions reliant upon them.  
 Produced By Planpix



Energy Efficiency Rating		Current	Potential
Very energy efficient - lower running costs			
(92 plus)	<b>A</b>		
(81-91)	<b>B</b>		
(69-80)	<b>C</b>		
(55-68)	<b>D</b>		
(39-54)	<b>E</b>		
(21-38)	<b>F</b>		
(1-20)	<b>G</b>		
Not energy efficient - higher running costs			
<b>England &amp; Wales</b>		EU Directive	
		2002/91/EC	



Agents Note: Whilst every care has been taken to prepare these particulars, they are for guidance purposes only. All measurements are approximate and are for general guidance purposes only and whilst every care has been taken to ensure their accuracy, they should not be relied upon and potential buyers/tenants are advised to recheck the measurements



**OFFICE ADDRESS**

57 Station Approach  
 Hayes  
 Kent  
 BR2 7EB

**OFFICE DETAILS**

020 8462 0360  
 infohy@sinclairhammelton.co.uk  
<https://www.sinclairhammelton.co.uk>  
 for-sale-in-hayes/