

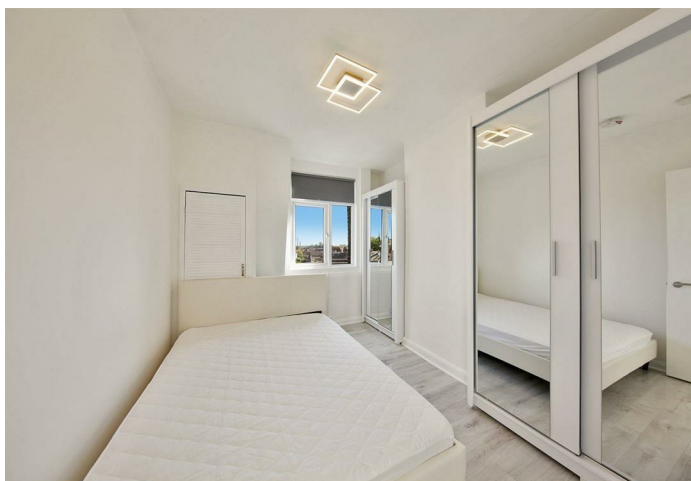


High Road, NW10

£1,850 Per Month

AVAILABLE TO LET is this bright and spacious two bedroom Flat, set on the Top Floor within this well maintained block situated between Willesden Green and Dollis Hill.

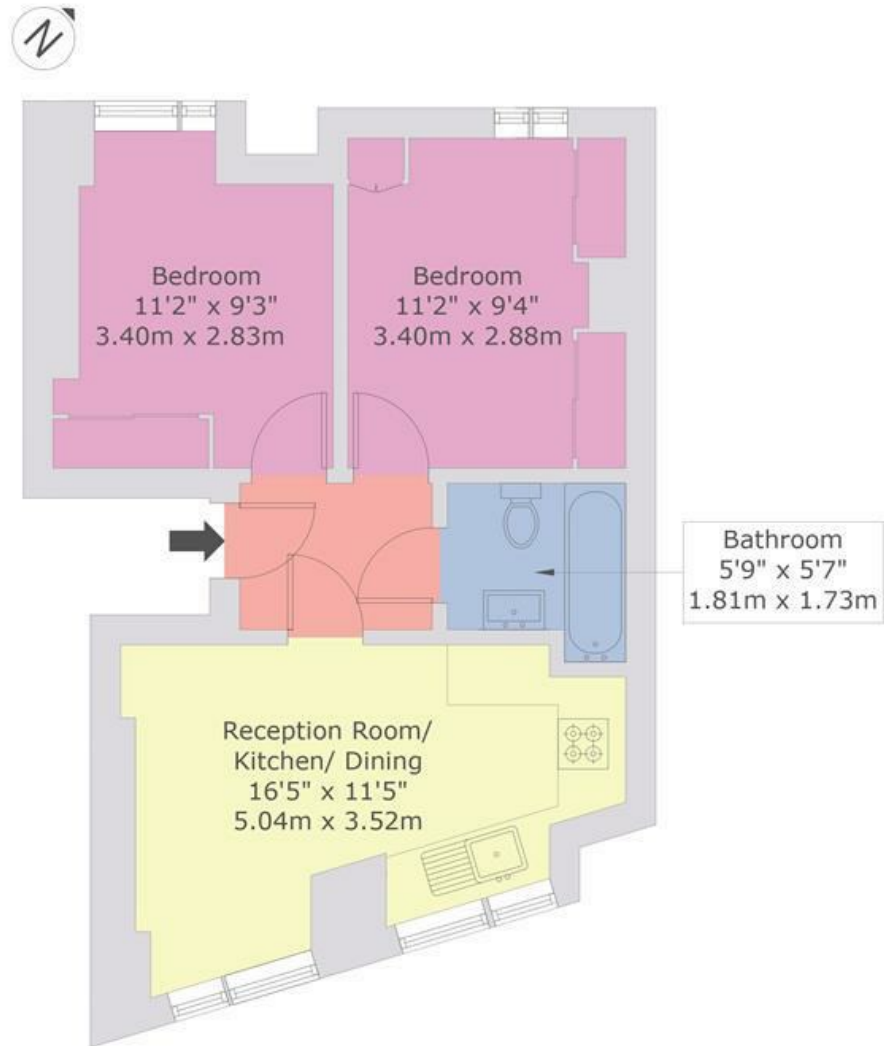
- AVAILABLE TO LET NOW
- Bright 2 bedroom, 1 bathroom Third Floor Flat
- Open plan modern kitchen/reception
- Within walking distance to local amenities
- Transport: Willesden Green (Jubilee-Zone 2)
- COUNCIL: Brent (B)
- Deposit: £2,134
- Viewing is highly recommended



020 8450 9377 - 020 8459 1133
rentals@cameronsstiff.co.uk

High Road, NW10

Approx Gross Internal Area = 37.80 sq m / 406 sq ft
For identification only - Not to scale



THIRD FLOOR



This floor plan is produced in accordance with RICS Property Measurement Standards incorporating International Property Measurement Standards (IPMS2 Residential). Maximum lengths and widths are represented on the floor plan. If there is any aspect of particular importance, you should carry out or commission your own inspection of the property. Produced for Cameron Stiff & Co. Copyright © BLEUPLAN

EPC: D
Ref: 19772781

