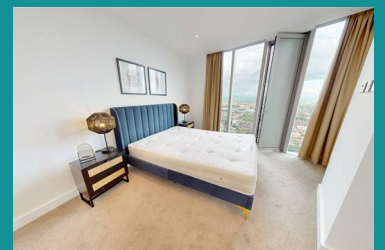




Apartment 4607 Three60, 11 Silvercroft Street,  
 M15 4TU  
**£375,000**



**\*\* SOLD WITH VACANT POSSESSION \*\* EWS1 FORM WITH A1 RATING \*\*** Perched on the 46th floor of one of Manchester's most sought after high rise developments is this luxury two bedroom apartment. The Three60 building is a 51 storey cylindrical residential skyscraper and forms part of the New Jackson neighbourhood, a thriving new community in the heart of the city and world-class skyscraper district with inspiring architecture that has transformed the city's skyline. It occupies a convenient location on the Southern Gateway entrance to the city close to Deansgate and is a short walk from First Street, Spinningfields and Castlefield. Residents have access to exceptional facilities including a state of the art gym, yoga studio, Peloton spin studio and wellness areas. There is also a rooftop terrace, landscaped gardens and 24 hour concierge service. Along with impressive far reaching views, the bright and beautifully maintained apartment boasts floor to ceiling windows and comprises, entrance hall with storage cupboards, open plan living room, sleek contemporary kitchen with high spec integrated appliances and dining area, two generously sized double bedrooms, a stylish fully tiled bathroom suite and en suite shower room. EPC rating B.



- LUXURY TWO BEDROOM APARTMENT
- INCREDIBLE SOUTH FACING VIEWS
- 46TH FLOOR POSITION
- SHORT WALK FROM DEANSGATE, SPINNINGFIELDS & FIRST STREET
- ROOF TOP TERRACE & COMMUNAL GARDENS
- RECENTLY BUILT DEVELOPMENT WITHIN NEW JACKSON NEIGHBOURHOOD
- 24/7 CONCIERGE SERVICE
- STATE OF THE ART FACILITIES INCLUDING GYM, RESIDENTS' LOUNGE & YOGA STUDIO
- IMPRESSIVE HIGH RISE CYLINDRICAL SKYSCRAPER
- NO ONWARD CHAIN