



*jordan fishwick*

Apt 213 Timber Wharf, 32 Worsley Street,  
£1,500 Per Calendar Month



## Timber Wharf Castlefield M15 4NX

£1,500 Per Calendar Month




### The Property

Available Late April. Jordan Fishwick are delighted to bring to the market this contemporary 2nd floor, two bedroom apartment located in the desirable Timber Wharf development, Castlefield. The apartment itself comprises of an open plan living/dining area with floor to ceiling double glazed windows. There is a kitchen off the living room with hob/oven, fridge/freezer and washing machine. Two double bedrooms, master with en-suite and fitted wardrobes. There is also a three piece bathroom suite. Large full length balcony accessed via all rooms. Secure parking space included. Tax Band D. EPC Rating TBC.

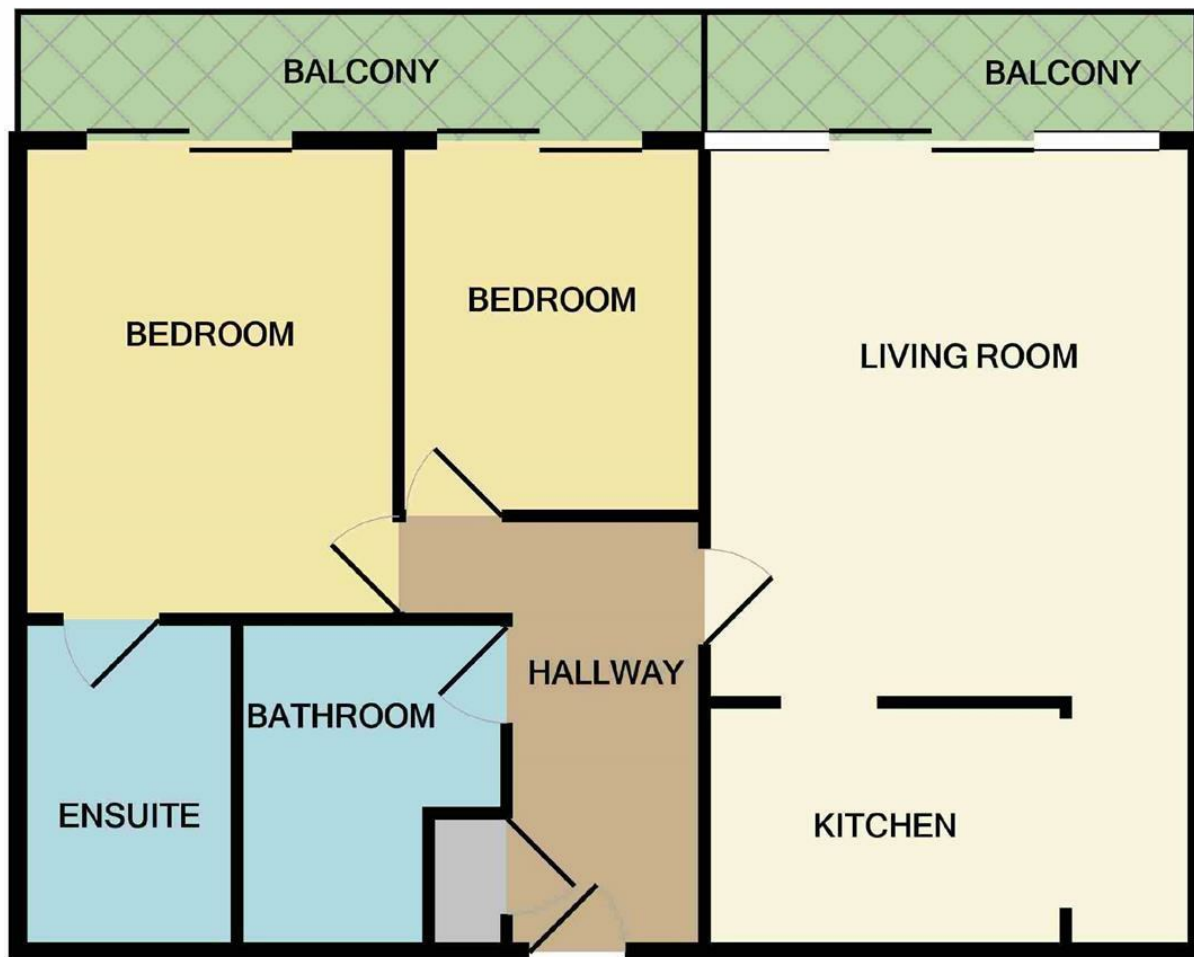
**\*VIDEO/ PHOTO OFFERS NOT ACCEPTED - PLEASE CALL TO BOOK A VIEWING\***

- Available Late April
- Second Floor
- Two Bedroom Apartment
- Secure Underground Parking
- EPC- TBC
- Council Tax Band- D
- Castlefield Location
- Large Balcony
- Short Walk to City Centre



Energy Efficiency Rating		
	Current	Potential
Very energy efficient - lower running costs		
(92 plus) <b>A</b>		
(81-91) <b>B</b>	<b>83</b>	<b>84</b>
(69-80) <b>C</b>		
(55-68) <b>D</b>		
(39-54) <b>E</b>		
(21-38) <b>F</b>		
(1-20) <b>G</b>		
Not energy efficient - higher running costs		
<b>England &amp; Wales</b>	EU Directive 2002/91/EC 	





Measurements are approximate. Not to scale. Illustrative purposes only  
Made with Metropix ©2022



These particulars are believed to be accurate but they are not guaranteed and do not form a contract. Neither Jordan Fishwick nor the vendor or lessor accept any responsibility in respect of these particulars, which are not intended to be statements or representations of fact and any intending purchaser or lessee must satisfy himself by inspection or otherwise as to the correctness of each of the statements contained in these particulars. Any floorplans on this brochure are for illustrative purposes only and are not necessarily to scale.

Offices at: Offices at Chorlton, Didsbury, Disley, Hale, Glossop, Macclesfield, Manchester Deansgate, Manchester Whitworth Street, New Mills, Sale, Wilmslow and Withington