



## Newnton Close, N4

### £475,000

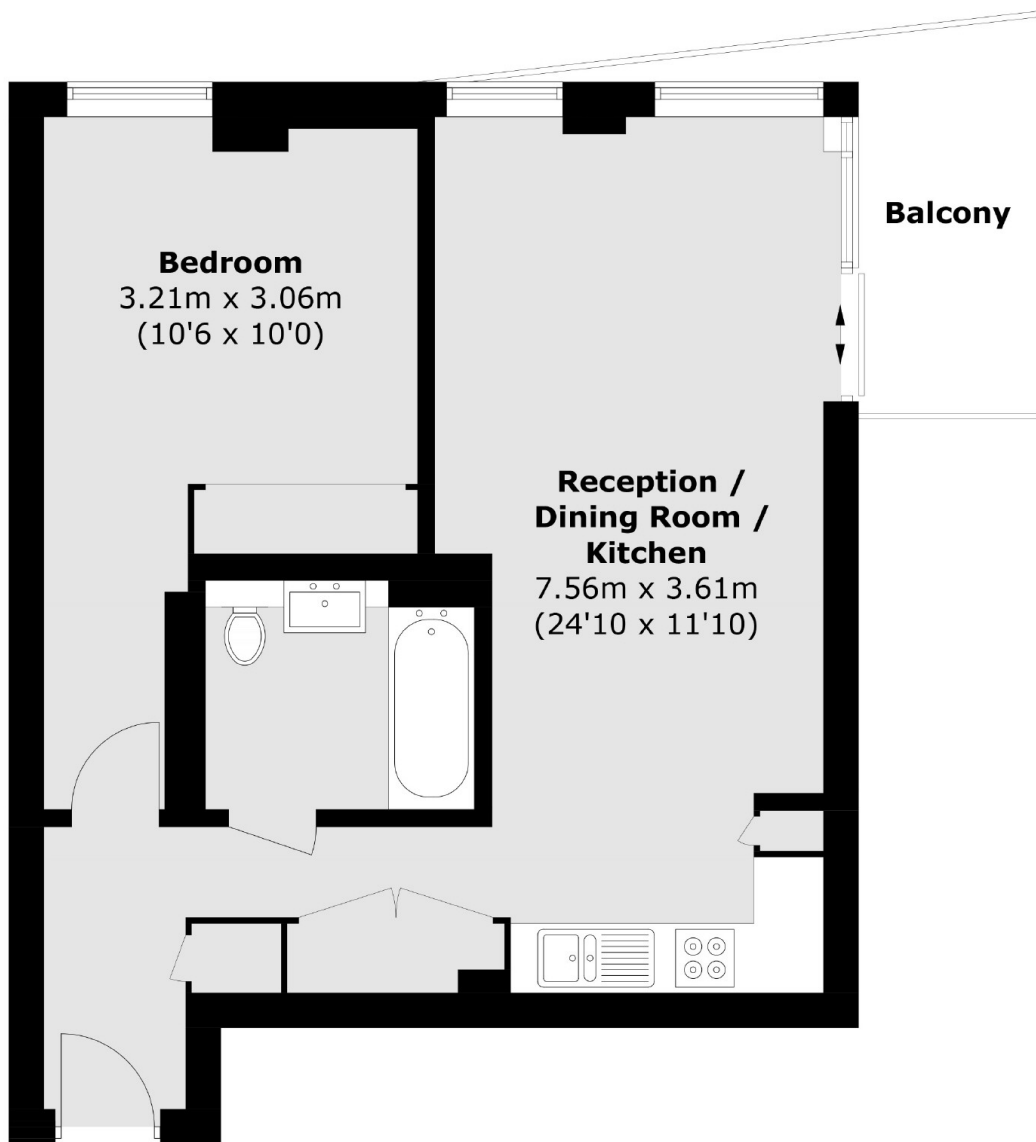
A stunning one bedroom, fourth floor apartment. Features include an open plan kitchen/reception room, with direct access to a large wraparound private balcony, one large double bedroom as well as a parking space.

Sandpiper Building is close to Manor House station and Finsbury Park station which has great transport links to the City and Central London. There is a selection of amenities and a popular Water Sports Centre all within comfortable walking distance.

### Features

- Luxury New Development
- Parking Space
- 24hr Concierge
- Health Club
- Residents Lounge
- Excellent Transport Links

# Newnton Close, London, N4



Approx Internal Area: 52.2 sq. m (561.9 sq. ft)  
Balcony: 5.8 sq. m (62.4 sq. ft)

## Dexters

Finsbury Park  
87 Stroud Green Road  
Finsbury Park  
London  
Sales  
020 7483 6360

Energy Rating: B. We aim to make our particulars both accurate and reliable. However they are not guaranteed; nor do they form part of an offer or contract. If you require clarification on any points then please contact us, especially if you're traveling some distance to view. Please note that appliances and heating systems have not been tested and therefore no warranties can be given as to their good working order.

 **RICS** | Regulated  
Estate Agent  
and Letting Agent

dexters.co.uk