



RUSSELL ROAD, W14

£699,000

Private entrance
Two bedroom
Bright reception
Wooden flooring
Private patio
Good condition

@marshandparsons
marshandparsons.co.uk

MARSH &
PARSONS



ABOUT THE PROPERTY

A well-arranged two-bedroom garden flat with private patio in a pretty tree-lined street.

A two-bedroom garden flat set on a well-located street within the Royal Borough of Kensington and Chelsea. The property is in good condition throughout and benefits from its own private entrance, wooden floors and extensive fitted storage. The accommodation includes a bright, spacious reception room, a separate kitchen, two bedrooms and a private patio garden.

Russell Road is a quiet, tree-lined residential street close to Kensington Olympia, with Holland Park, Kensington High Street and Brook Green all within easy reach.

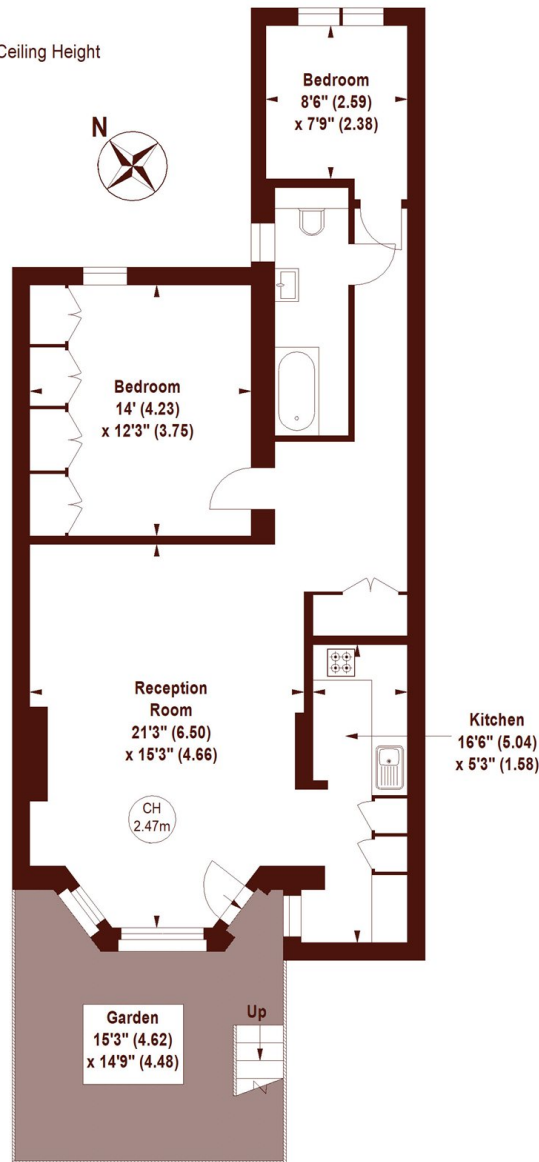


STEP INSIDE RUSSELL ROAD

Russell Road, W14

APPROX. GROSS INTERNAL FLOOR AREA 850 SQFT / 78.97 SQM

Key :
CH - Ceiling Height



LOWER GROUND FLOOR

Not to scale, for guidance only and must not be relied upon as a statement of fact.
All measurements and areas are approximate only

Holland Park
020 7605 6890

Energy Rating: C We aim to make our particulars both accurate and reliable. However, they are not guaranteed; nor do they form part of an offer or contract. If you require clarification on any points then please contact us, especially if you're traveling some distance to view. Please note that appliances and heating systems have not been tested and therefore no warranties can be given as to their good working order

MARSH &
PARSONS