



Connells

Oldhams Meadow
AYLESBURY

Oldhams Meadow AYLESBURY HP20 2UT

for sale
£290,000



Property Description

Nestled in the sought-after village location of Beirton, this charming two-bedroom semi-detached home is an ideal purchase for first-time buyers, downsizers, or investors alike. Offered with no upper chain, the property boasts gas central heating and double glazing throughout, ensuring comfort and efficiency.

Upon entering via the porch, you are welcomed into a spacious lounge/diner, which enjoys a bright aspect and opens directly onto the enclosed rear garden through a patio door. The kitchen is fitted with a range of wall and base units, providing ample storage and workspace, along with space for white goods and appliances.

Upstairs, the accommodation comprises two well-proportioned bedrooms, with the front aspect master benefitting from built-in wardrobes. Both rooms are served by a family-sized bathroom suite, complete with bath and mixer tap, WC, and wash hand basin.

Externally, the rear garden is fully enclosed, laid mainly to lawn with a patio area perfect for outdoor dining and relaxation. The property further benefits from a garage, with convenient parking directly in front.

Beirton village has two public houses, a large church, playing fields and a very sought after village school. The nearby market town of Aylesbury provides a full range of commercial, shopping and leisure facilities as well as Grammar Schools. A main line station

to London Marylebone can be found in Aylesbury and has a journey time of approx 1 hr.

Entrance Porch

Door to front

Lounge/Diner

23' 3" x 12' 5" (7.09m x 3.78m)

Window to front

Door to rear

Carpet underfoot

Radiator

Kitchen

9' 4" x 5' 2" (2.84m x 1.57m)

Window to rear

Tiling underfoot

Boiler

Wall and base units

Space for white goods

Part tiling

Landing

Window to side

Carpet underfoot

Radiator

Loft access

Bedroom One

9' 1" x 13' 1" (2.77m x 3.99m)

Window to front
Carpet underfoot
Radiator
Airing Cupboard

Bedroom Two

10' x 6' 5" (3.05m x 1.96m)
Window to rear
Carpet underfoot
Radiator

Bathroom

Window to rear
Vinyl underfoot
WC
Wash hand basin
Bath/mixer
Radiator
Part tiling

Rear Garden

Patio
Laid lawn
Enclosed fencing

Parking

In front of garage

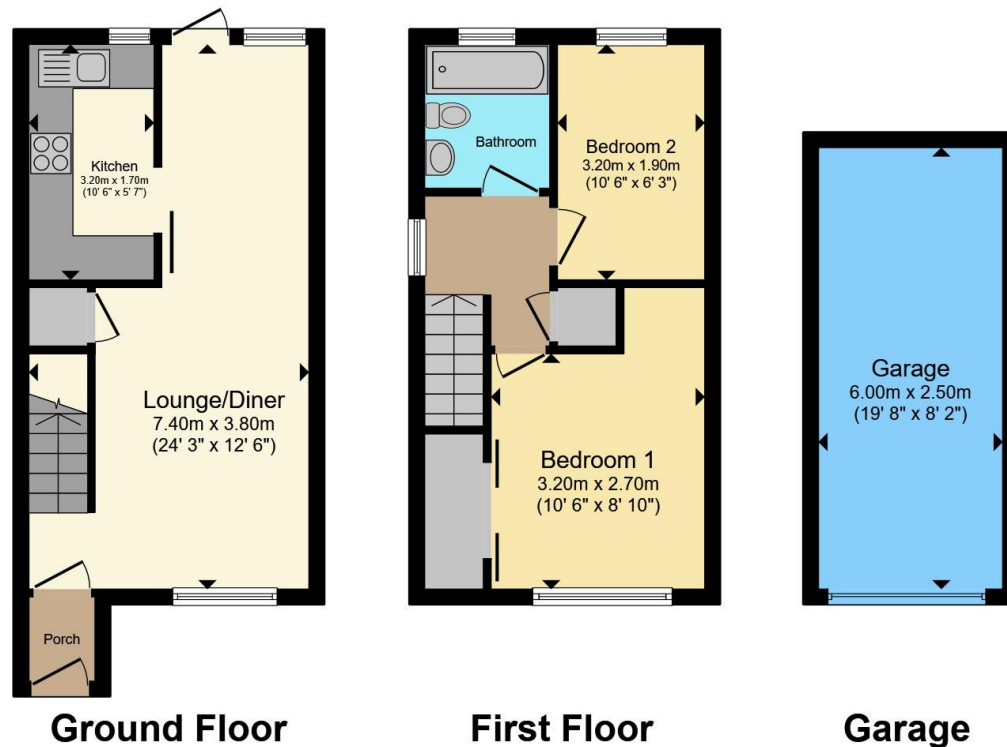
Garage

18' 1" x 9' 6" (5.51m x 2.90m)
Up and over door









Total floor area 72.4 m² (779 sq.ft.) approx

This floor plan is for illustrative purposes only. It is not drawn to scale. Any measurements, floor areas (including any total floor area), openings and orientation are approximate. No details are guaranteed, they cannot be relied upon for any purpose and they do not form part of any agreement. No liability is taken for any error, omission or misstatement. A party must rely upon its own inspection(s). Powered by www.propertybox.io

Connells

To view this property please contact Connells on

T 01296 395 111
E aylesbury@connells.co.uk

2 Temple Street
 AYLESBURY HP20 2RH

EPC Rating: C Council Tax
 Band: C

Tenure: Freehold

view this property online connells.co.uk/Property/ALS312703



1. MONEY LAUNDERING REGULATIONS Intending purchasers will be asked to produce identification documentation at a later stage and we would ask for your co-operation in order that there will be no delay in agreeing the sale. 2. These particulars do not constitute part or all of an offer or contract. 3. The measurements indicated are supplied for guidance only and as such must be considered incorrect. Potential buyers are advised to recheck measurements before committing to any expense. 4. We have not tested any apparatus, equipment, fixtures, fittings or services and it is in the buyers interest to check the working condition of any appliances.

Connells Residential is registered in England and Wales under company number 1489613, Registered Office is Cumbria House, 16-20 Hockliffe Street, Leighton Buzzard, Bedfordshire, LU7 1GN. VAT Registration Number is 500 2481 05.

See all our properties at www.connells.co.uk | www.rightmove.co.uk | www.zoopla.co.uk

Property Ref: ALS312703 - 0003