



## Great Cumberland Mews, W1H

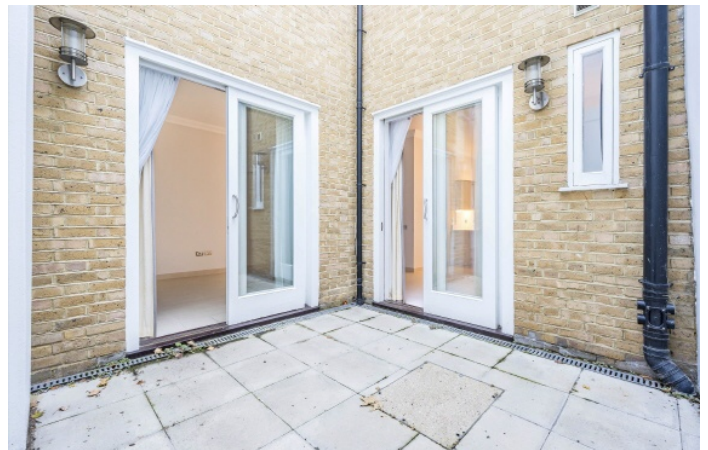
£1,700,000

A three bedroom mews house with a garage and courtyard patio. Made available by The Portman Estate, stewards of one of London's great historic estates.

Located in Portman Village just north of Marble Arch. Mayfair, Marylebone and Hyde Park are a short walk away.

### Features

- 999 Year Lease
- Three Double Bedrooms
- En Suite To Main Bedroom
- Open Plan Living
- Courtyard Patio
- Garage Integral to House



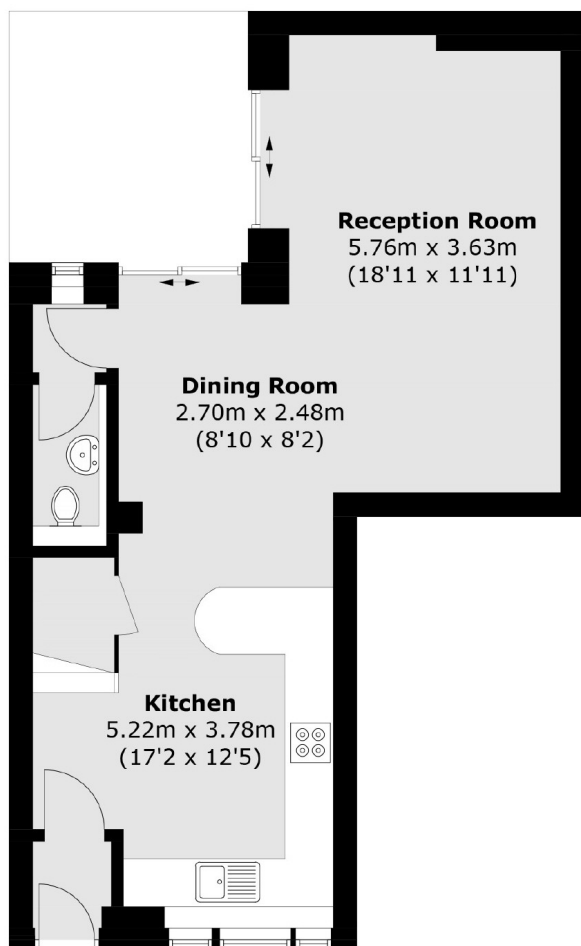
## Great Cumberland Mews, W1H

The ground floor kitchen is open to the reception-dining room. The area opens to a courtyard patio and there is a guest cloakroom. The first floor has a main bedroom with en-suite bathroom, two further bedrooms, bathroom and utility room. The garage is able to accommodate a vehicle and may offer potential subject to consent to convert to habitable space.

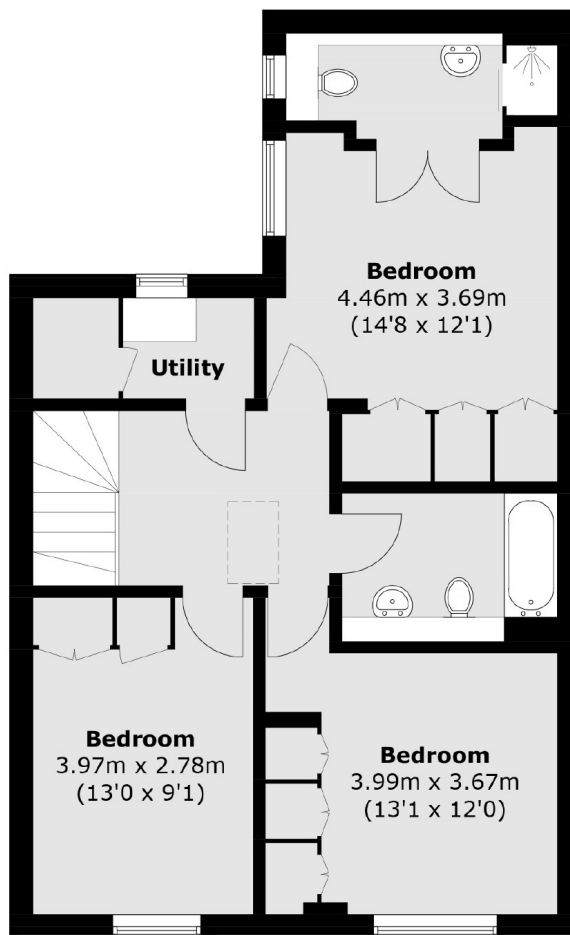




# Great Cumberland Mews, London, W1H



**Ground Floor**



**First Floor**

Total area (approx.): 112.0 sq. m (1,205.5 sq. ft)