



House - Detached (EPC Rating:)

GOLF AT BOLD HOUSE 36 MANOR ROAD, SOUTHPORT, MERSEYSIDE, PR9 7LE

Per Week

£19,000

FEATURES

- Open 2026 Accommodation
- Prime Churchtown Location
- Two Full Bathrooms
- Historic Georgian Manor Home
- Fourteen Minute Drive from Royal Birkdale Golf Club
- Five Elegant Bedrooms
- Four Reception Spaces
- Premium Comfort & Convenience



 **anthony james**
estate agents

5 Bedroom House - Detached located in Southport

GOLF | CHARLOTTE HOUSE, GROUND FLOOR, 35-37 HOGHTON STREET, SOUTHPORT, MERSEYSIDE, PR9 0NS



GOLF | CHARLOTTE HOUSE, GROUND FLOOR, 35-37 HOGHTON STREET, SOUTHPORT, MERSEYSIDE, PR9 0NS



GOLF | CHARLOTTE HOUSE, GROUND FLOOR, 35-37 HOGHTON STREET, SOUTHPORT, MERSEYSIDE, PR9 0NS



GOLF | CHARLOTTE HOUSE, GROUND FLOOR, 35-37 HOGHTON STREET, SOUTHPORT, MERSEYSIDE, PR9 0NS

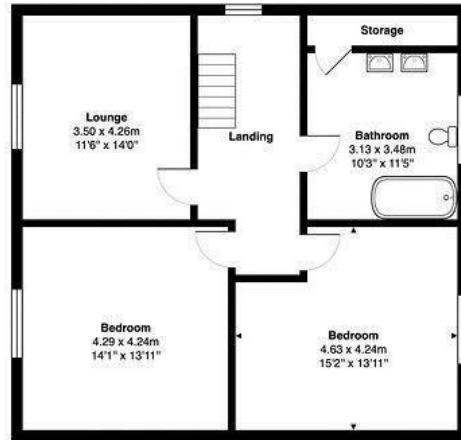
Call us on

01704543434

golf@ajestateagents.co.uk

<https://www.ajestateagents.co.uk/properties/to-rent/sort-price-asc>

Council Tax Band



Second Floor



Ground Floor



First Floor

Manor Road, Southport, PR9 7LE
Total Area: 279.6 m² ... 3010 ft²

All measurements are approximate and for display purposes only

Energy Efficiency Rating		
	Current	Potential
Very energy efficient - lower running costs		
(92 plus) A		
(81-91) B		
(69-80) C		
(55-68) D		
(21-54) E		
(1-20) F		
(1-20) G		
Not energy efficient - higher running costs		
England & Wales		EU Directive 2002/91/EC

Agents Note: Whilst every care has been taken to prepare these particulars, they are for guidance purposes only. All measurements are approximate and are for general guidance purposes only and whilst every care has been taken to ensure their accuracy, they should not be relied upon and potential buyers are advised to recheck the measurements.