



4 Darrell Way, Abingdon OX14 1HQ



4 Darrell Way

Large four bedroom 1950's built family home offering 1,399 sq ft of much improved and well presented accommodation, combined with large gardens within this very popular location, offering easy pedestrian access to nearby excellent schooling and the thriving town centre's many amenities, sold with no ongoing chain.

Darrell Way is a popular and very established location situated on the edge of Abingdon town centre and offers easy pedestrian access to many nearby amenities including the St Nicholas Primary School and John Mason Secondary School. There is a quick route onto the A34 leading to many important destinations north and south including Oxford city centre (circa. 6 miles).

Bedrooms: 4

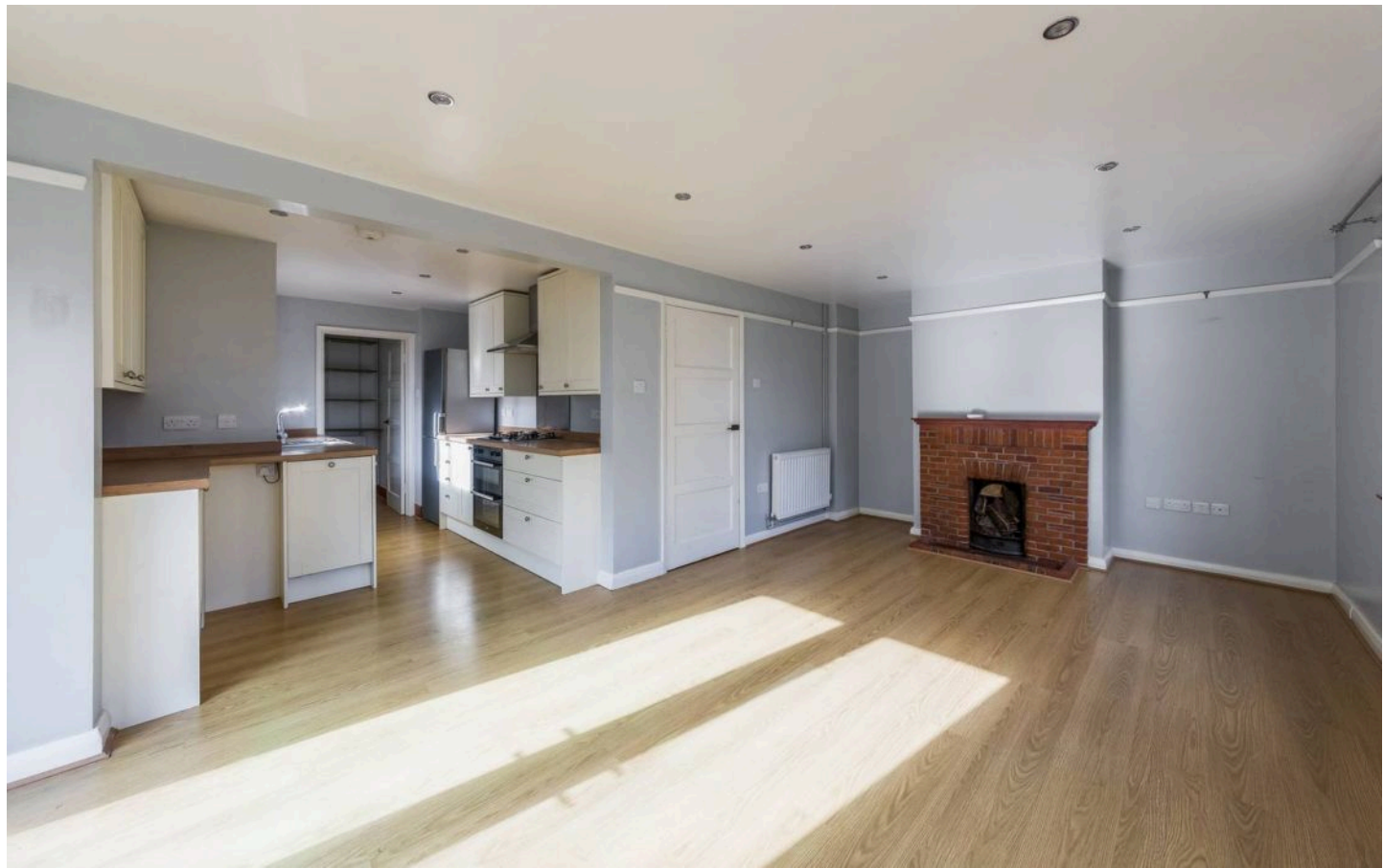
Bathrooms: 2

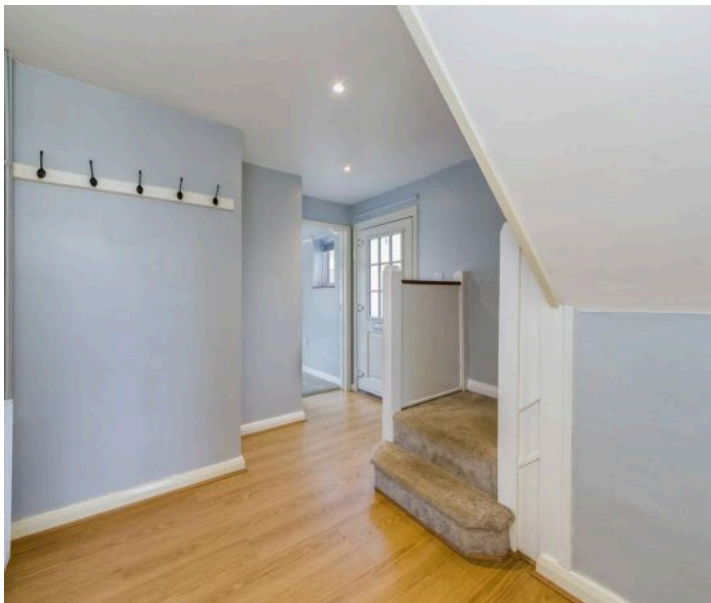
Reception Rooms: 2

Council Tax Band: D

Tenure: Freehold

EPC: D

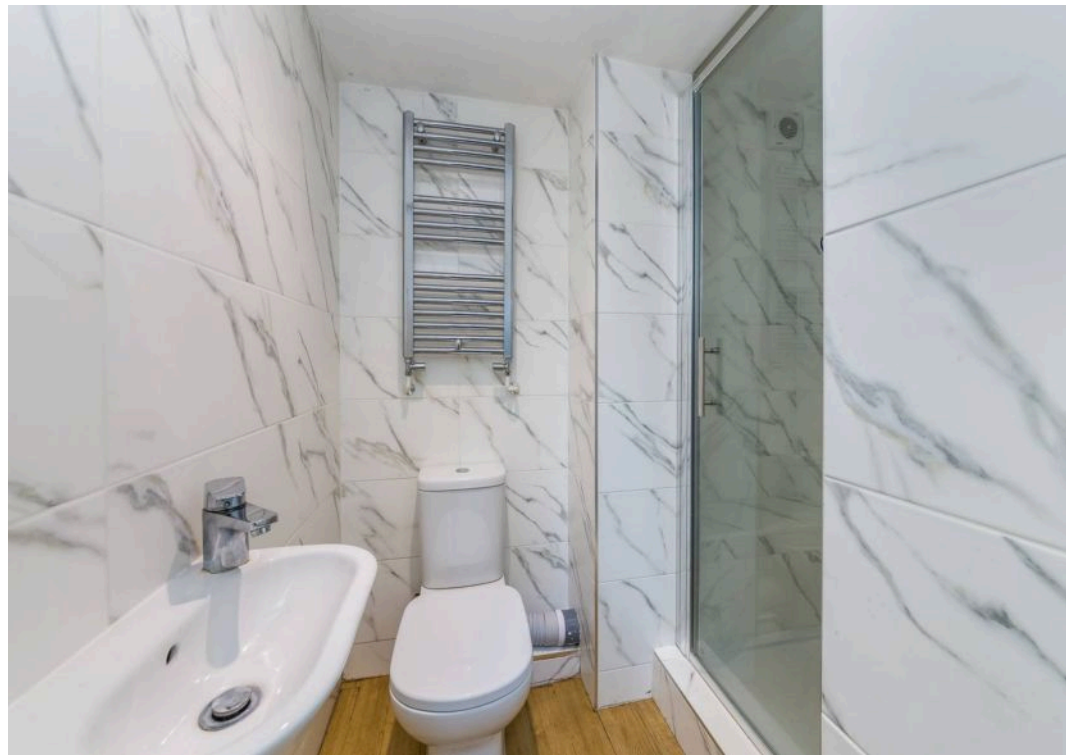
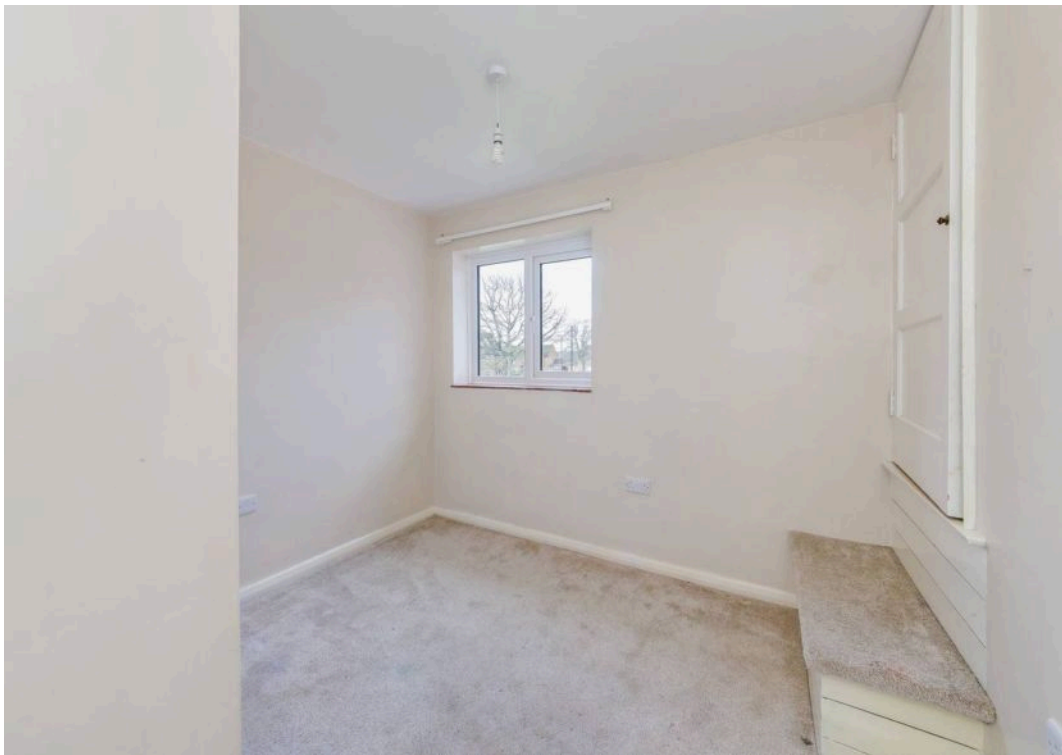




4 Darrell Way

- Entrance hall leading to impressive open plan double aspect refurbished kitchen/dining/family room with double doors leading to the large gardens
- Separate utility room with ground floor shower room off
- Inner hall leading to storeroom and versatile brick built workshop/garden storeroom (could provide a useful study)
- Delightful separate front living room with large bay window
- Large first floor main double aspect double bedroom
- Three further spacious bedrooms complemented by refitted family bathroom and refitted separate WC
- PVC double glazed windows, mains gas radiator central heating and the property will be sold with no ongoing chain
- Generous front gardens (could potentially provide hard standing parking facilities to subject to planning)
- Large rear gardens incorporating patio and extensive lawn, offering excellent potential to substantially extend the existing accommodation—the whole enclosed by trees, shrubbery and fencing









BRITISH
PROPERTY
AWARDS
2024

GOLD WINNER

ESTATE AGENT
IN ABINGDON

Hodsons
...your move, our passion

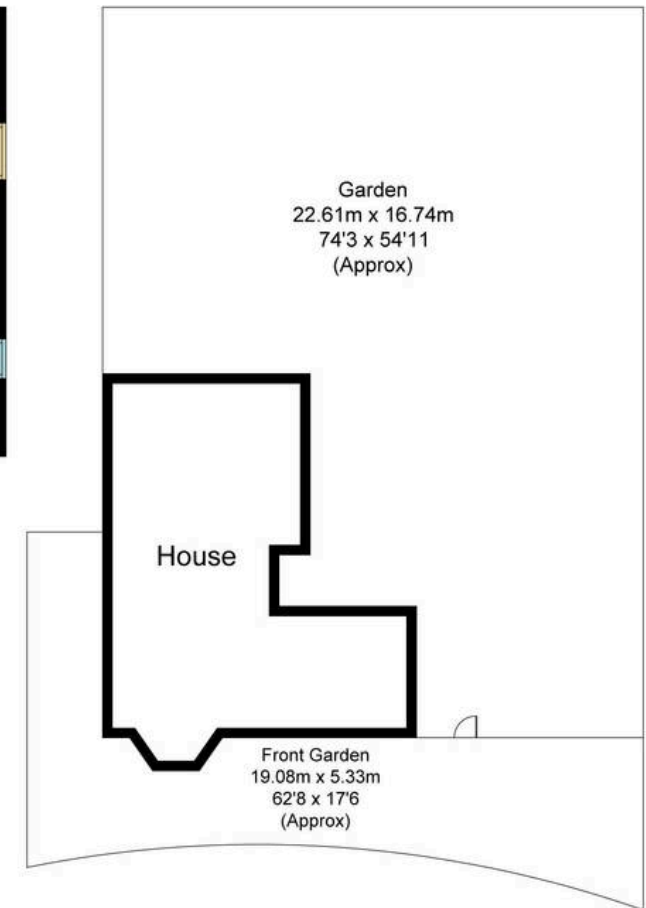
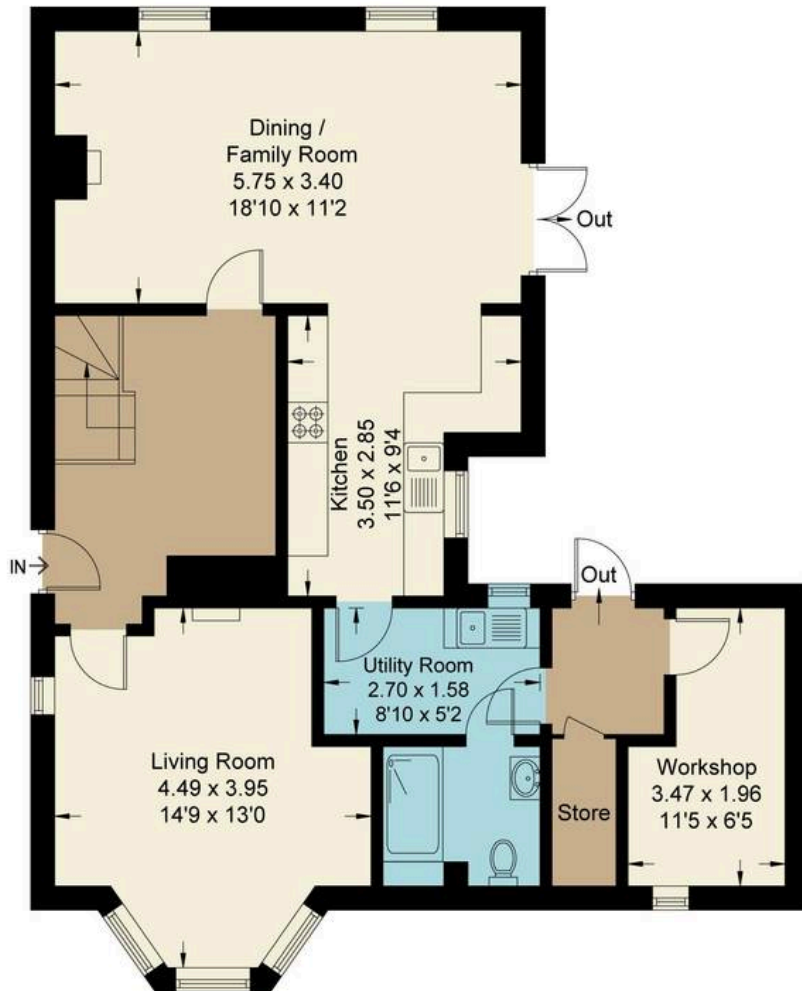
Introducing the Hodsons team...
...trust in our experience!



Darrell Way, OX14

Approximate Gross Internal Area = 130.0 sq m / 1399 sq ft

For identification only - Not to scale



Ground Floor

First Floor

Not to scale, for illustration and layout purposes only.
© Mortimer Photography. Produced for Hodsons.
Unauthorised reproduction prohibited



Hodsons
...your move, our passion
Sales | Lettings

5 Ock Street, Abingdon,
Oxfordshire, OX14 5AL
T: 01235 553686
E: abingdon@hodsons.co.uk
www.hodsons.co.uk