



## Macroom Road, W9

£500,000

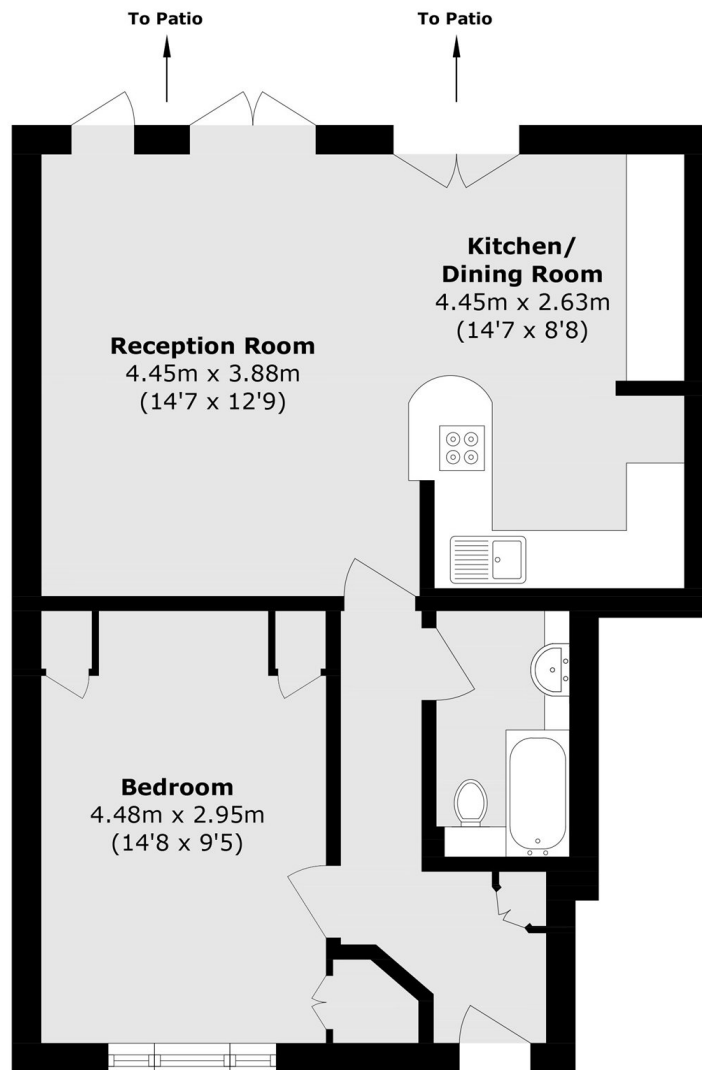
Nestled within a stunning converted church on Macroom Road, this well-presented one bedroom apartment is set on the ground floor. The property includes a spacious open plan kitchen/reception room, double bedroom, private patio and wooden flooring throughout.

Macroom Road is a picturesque, tree-lined street between Queen's Park and Maida Vale. Enjoy excellent cafes, restaurants, shops, and pubs on Salisbury Road and Elgin Avenue, with Portobello Road nearby. Green spaces like Paddington Recreation Ground and the Grand Union Canal towpaths are close. Convenient transport includes Queen's Park and Maida Vale Stations (Bakerloo line and London Overground). The esteemed Maida Vale School on Saltram Crescent adds to the appeal.

### Features

- Private Entrance
- Share Of Freehold
- Church Conversion
- Private Patio
- Wooden Flooring Throughout
- Great Transport Links

# Macroom Road, Maida Vale, W9



## Ground Floor

Total (approx.): 55.3 sq. m (595.3 sq. ft)