

# The Seychelles

4 bedroom semi-detached home



**karbon**  
homes

# The Seychelles

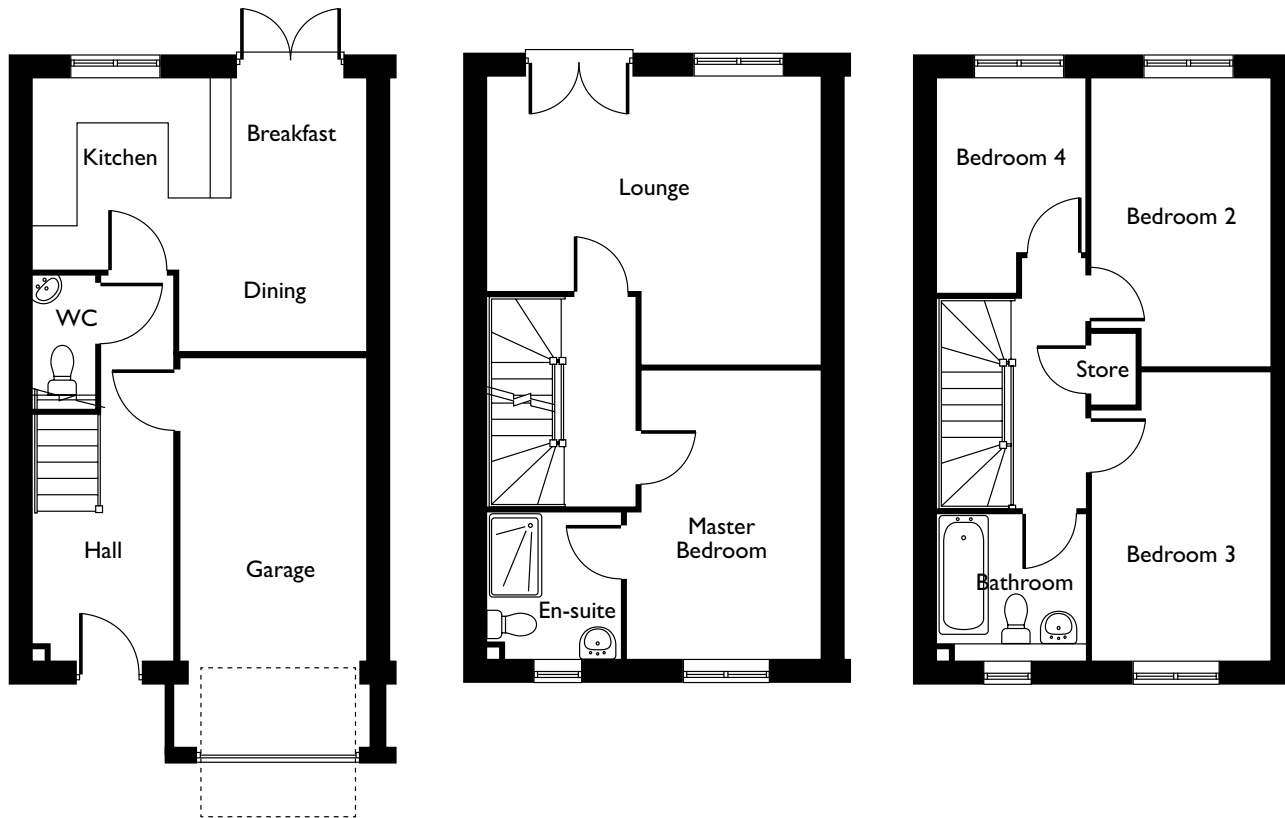
## 4 bedroom semi-detached home

If you are looking for a modern, spacious 4 bedroom home set over three floors then The Seychelles is the home for you.

On the ground floor there is a contemporary kitchen with dining and breakfast area leading through French doors to the rear garden. There is also a WC and access to the integral garage.

The first floor features a spacious lounge, with Juliette balcony and the master bedroom complete with en-suite shower room.

The second floor provides three further bedrooms, storage and a family bathroom.



### Ground Floor

Kitchen/Dining Area (max)	4.7m x 3.8m	15'6" x 12'8"
WC	0.8m x 1.7m	2'9" x 5'5"

### First Floor

Lounge (max)	4.7m x 4.1m	15'6" x 13'5"
Master Bedroom (max)	2.7m x 4.1m	9'0" x 13'5"
En-suite	1.9m x 2.0m	6'2" x 6'9"

### Second Floor

Bedroom 2	2.5m x 4.1m	8'4" x 13'5"
Bedroom 3	2.5m x 4.1m	8'4" x 13'5"
Bedroom 4	2.1m x 3.0m	6'11" x 9'11"
Bathroom	2.4m x 2.0m	8'0" x 6'8"