



6 Spring Lane, Lambley - NG4 4PH

Guide Price £350,000



6 Spring Lane

Lambley, Nottingham

NO CHAIN! 3 double bed detached home tucked away from the roadside in the highly sought-after Lambley! Surrounded by open countryside, a short walk from Lambley Primary and lots of further potential!

Council Tax band: C

Tenure: Freehold

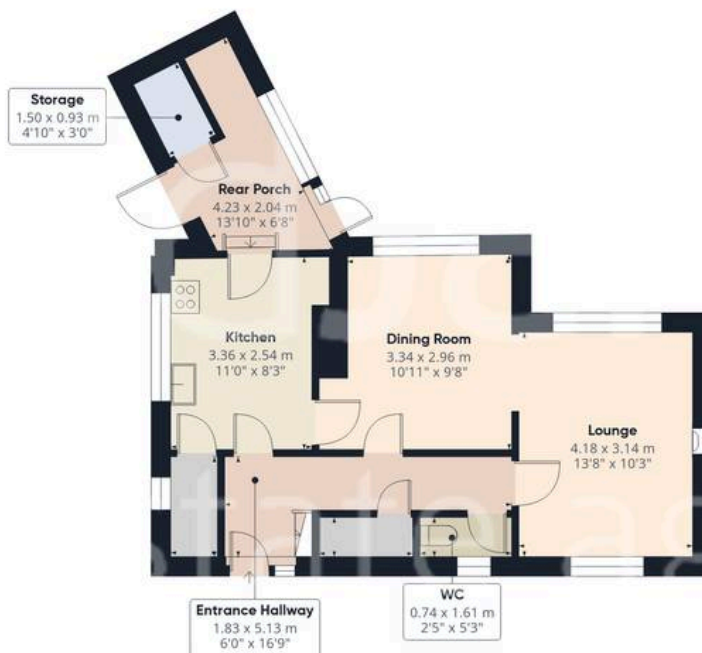
EPC Energy Efficiency Rating: D

EPC Environmental Impact Rating: D

- Detached family home available with no chain
- Stunning semi-rural village position bordering open countryside
- Mapperley's amenities, Gedling Country Park and Lambley Primary School all within easy reach
- Welcoming entrance hall with a convenient cloakroom/WC
- Two versatile and light-filled reception rooms (lounge and separate dining room)
- Modern kitchen with white gloss units and pantry storage space
- Three first-floor double bedrooms (all with pleasant outlooks)
- Family bathroom with white suite and electric shower fitted modern clean finish
- Generous plot with surrounding established gardens
- Shared driveway leading to a garage







Floor 0



Floor 1



Approximate total area⁽¹⁾

91.9 m²

988 ft²

Reduced headroom

1.2 m²

12 ft²

(1) Excluding balconies and terraces

Reduced headroom

----- Below 1.5 m/5 ft

Calculations reference the RICS IPMS 3C standard. Measurements are approximate and not to scale. This floor plan is intended for illustration only.

GIRAFFE360



David James Estate Agents

David James Estate Agents, 45B Plains Road – NG3 5JU

0115 962 4213 • mapperley@david-james.com • www.david-james.com

These particulars are produced in good faith and are set out as a general guide only. Measurements are approximate and floor plans are for illustrative purposes only. Services have not been tested. We have established professional relationships with third-party suppliers for the provision of services to Clients, details of which can be found on the property listing page on our website.