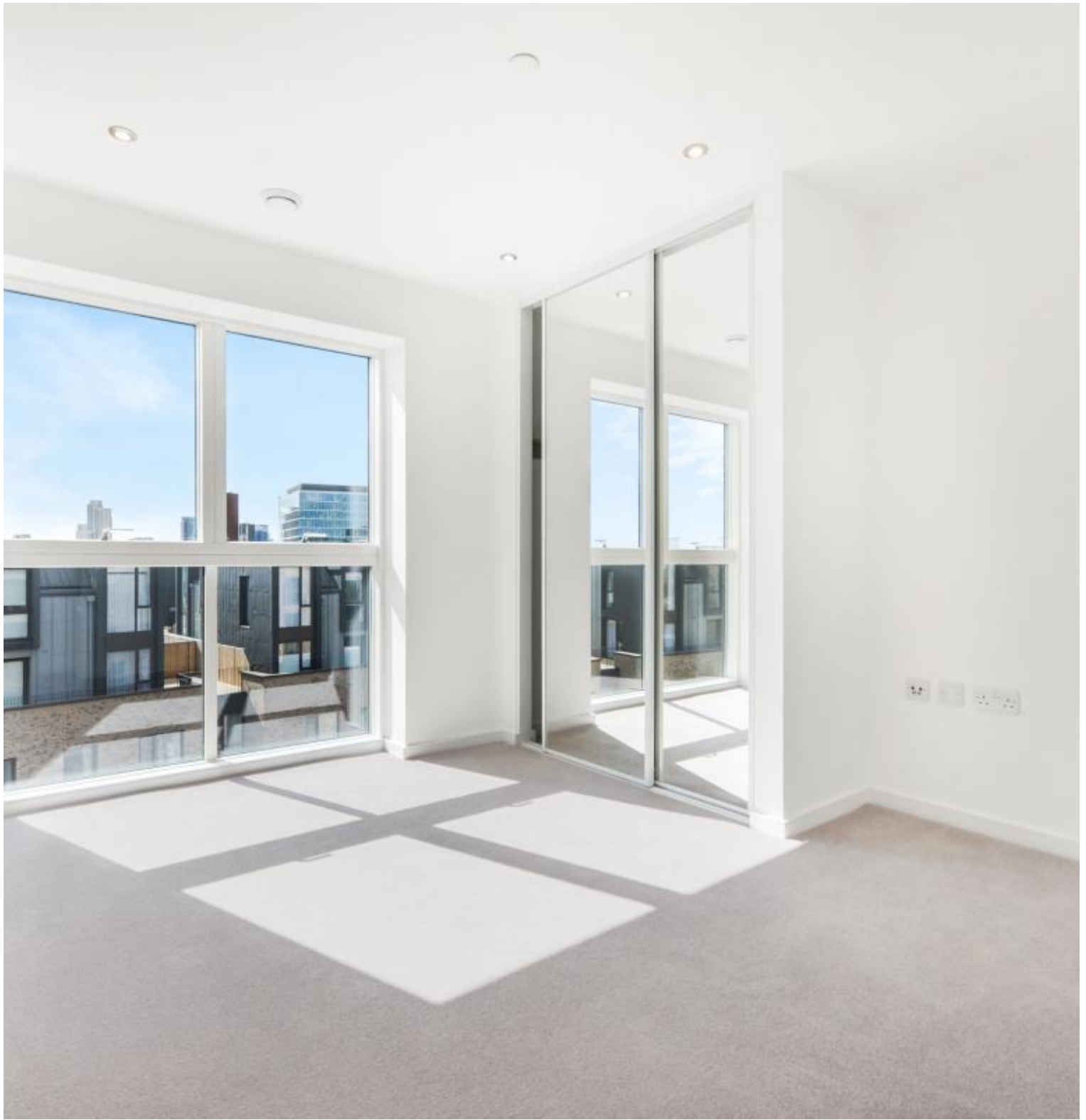
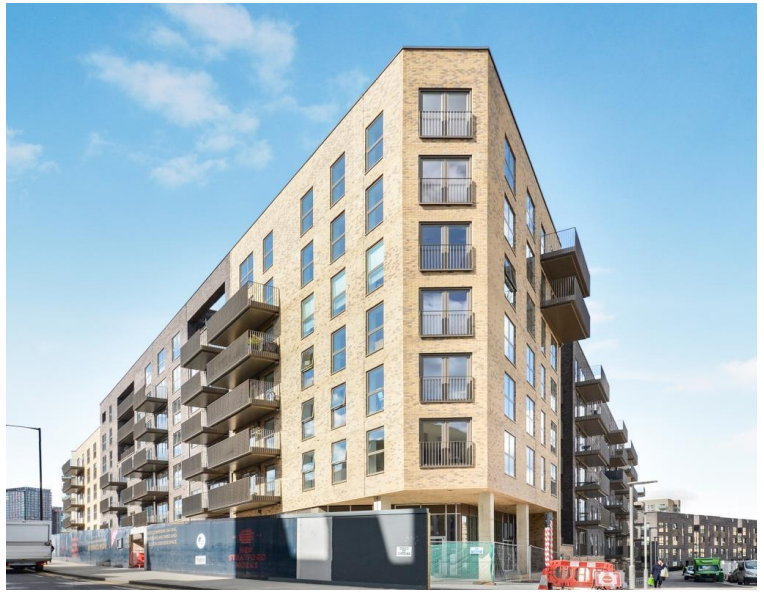


Penny Brookes Street, London E15

Offers In Excess Of £450,000 Leasehold







Description

Situated in Stratford's dynamic regenerated quarter, the Wenborn Building within New Stratford Works offers convenient living at the gateway to Queen Elizabeth Olympic Park. This contemporary development combines architectural elegance with the energy of East London's most connected neighbourhood, where culture, retail, and green spaces converge.

This one-bedroom apartment showcases high specification finishes throughout, creating a refined living environment flooded with natural light. The open-plan reception and kitchen area provides an inviting space for everyday living and entertaining, whilst the private west-facing terrace offers an exceptional outdoor retreat with space for seating, perfect for enjoying evening sun with views towards the Olympic Park. The generous bedroom provides comfortable accommodation, complemented by a sleek bathroom finished to an exacting standard. Residents benefit from lift access and beautifully maintained communal landscaped gardens.

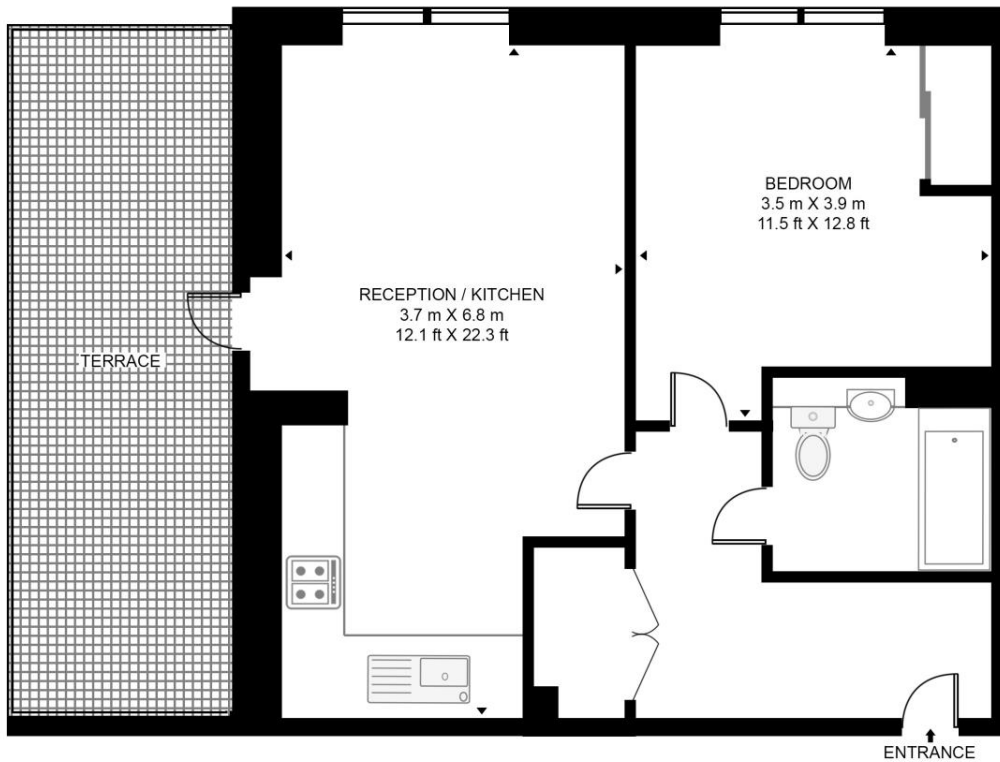
Stratford has emerged as one of London's most exciting residential destinations, transformed by substantial investment and world-class infrastructure.

- Private west-facing terrace
- Queen Elizabeth Olympic Park
- High specification finishes
- Communal landscaped gardens
- Westfield Stratford City
- Excellent transport connections
- 7th Floor with lift access
- Modern apartment living
- Bright reception room
- Approx. 543 sq. ft (50.5 sq. m)

Floorplan

543 sq ft | 50 sq m

WENBORN BUILDING, NEW STRATFORD WORKS
APPROXIMATE GROSS INTERNAL FLOOR AREA 543 SQ.FT (50.5 SQ.M)



SEVENTH FLOOR

HDVA

This floor plan has been defined by the RICS Code of Measurement. This floor plan and all others are for approximate representative purposes only and upon usage is agreed to as such by the client.

WWW: hdvirtualart.com | TEL: 0203.974.1567 | EMAIL: info@hdvirtualart.com

Stratford
5 Station Street,
London E15 1DA
+4420 3147 1500
Lettingsstratford@eu.jll.com

Urban living, your way.

jll.co.uk/residential

© 2019 Jones Lang LaSalle IP, Inc. All rights reserved. All information contained herein is from sources deemed reliable; however, no representation or warranty is made to the accuracy thereof.

