



11 Wesley Street, Gateshead, NE9 5UX

Offers Over £200,000

Located on Wesley Street in Low Fell, this charming terraced house presents an exceptional opportunity for those seeking a spacious family home. Originally designed as a pair of flats, the property has been thoughtfully converted to create a substantial living space that is both versatile and inviting. Upon entering, you are greeted by a generous ground floor hallway that leads to a delightful living room, complete with a feature fireplace that adds a touch of warmth and character. The dining room boasts built-in storage, providing practical solutions for everyday living, and offers seamless access to the well-equipped kitchen, which features an integrated oven, perfect for culinary enthusiasts. The ground floor also includes a convenient bedroom, a rear hallway, and a bathroom, ensuring ample accommodation for family and guests alike. As you ascend to the first floor, you will find a landing that grants access to a floored loft, ideal for additional storage. The first floor comprises an extra sitting room, a bedroom with fitted wardrobes nestled in the alcoves, along with two further bedrooms that offer flexibility for various living arrangements. A second kitchen, also equipped with an integrated oven, and an additional bathroom complete this level, enhancing the home's functionality. Outside, the property features a low-maintenance front garden adorned with an Astro turf lawn, complemented by a raised decked sun terrace, perfect for enjoying sunny days. The rear yard provides further outdoor space, ideal for relaxation or entertaining. Viewings are highly recommended to fully appreciate the versatile accommodation and the potential this property has to offer. This home is perfect for families or those looking for a spacious residence in a convenient location. Could also be converted back to a pair of flats if desired.

ENTRANCE HALLWAY

INTERNAL HALLWAY

LIVING ROOM

14'9" x 13'6" (4.51m x 4.14m)



DINING ROOM

14'9" x 12'6" (4.52m x 3.82m)



GROUND FLOOR BEDROOM FOUR

11'3" x 7'8" (3.43m x 2.34m)



KITCHEN

9'11" x 6'3" (3.03m x 1.91m)



REAR HALLWAY

BATHROOM

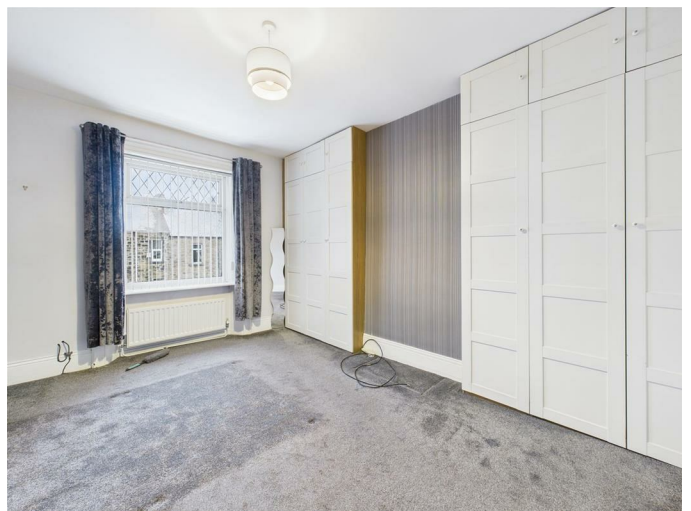
6'4" x 5'8" (1.94m x 1.74m)



FIRST FLOOR LANDING

BEDROOM ONE

14'7" x 11'3" (4.45m x 3.44m)



BEDROOM TWO

11'3" x 7'9" (3.45m x 2.37m)

BEDROOM THREE

11'4" x 7'10" (3.46m x 2.39m)



BATHROOM TWO

6'3" x 5'9" (1.93m x 1.76m)



SITTING ROOM

14'10" x 12'9" (4.53m x 3.90m)



EXTERNAL



FIRST FLOOR KITCHEN

9'9" x 6'7" (2.98m x 2.01m)



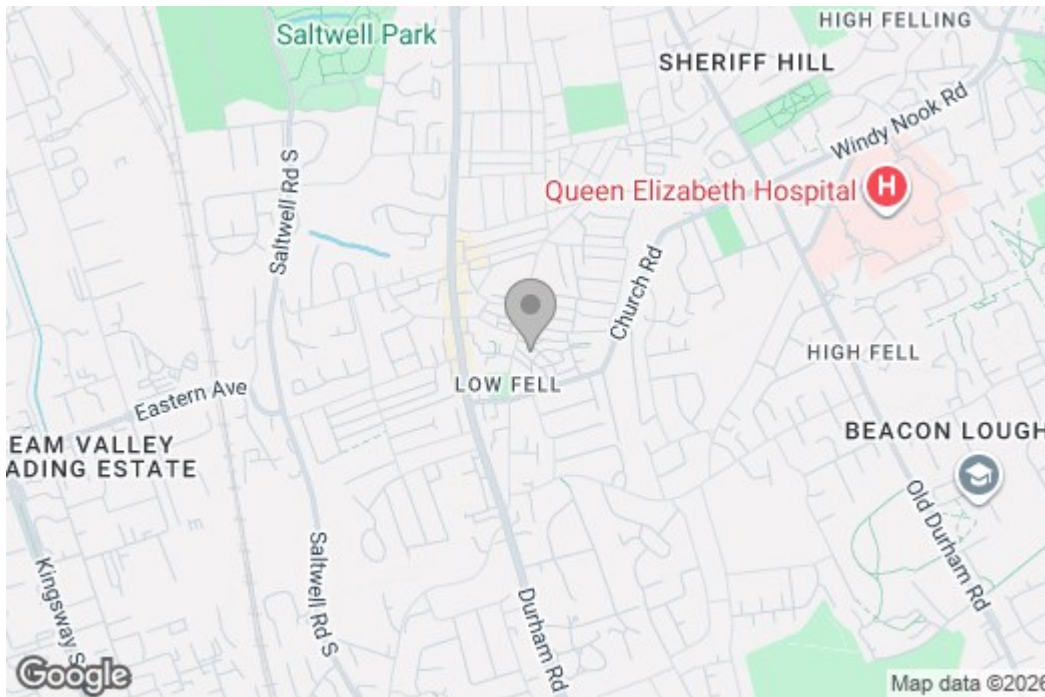
REAR HALLWAY

Property disclaimer

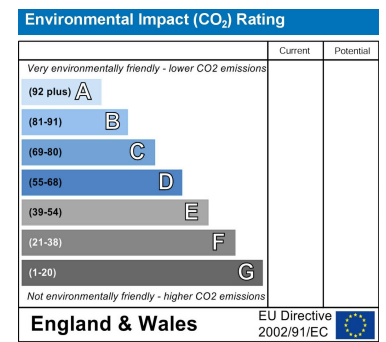
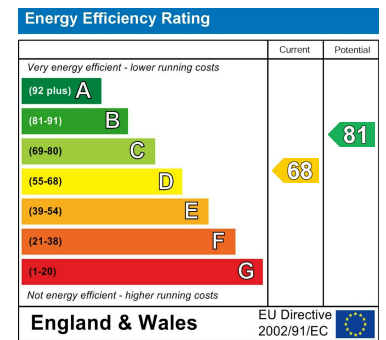
IMPORTANT NOTE TO PURCHASERS: We endeavour to make our sales particulars accurate and reliable, however, they do not constitute or form part of an offer or any contract and none is to be relied upon as statements of representation or fact. The services, systems and appliances listed in this specification have not been tested by us and no guarantee as to their operating ability or efficiency is given. All measurements have been taken as a guide to prospective buyers only, and are not precise. Floor plans where included are not to scale and accuracy is not guaranteed. If you require clarification or further information on any points, please contact us, especially if you are travelling some distance to view. Fixtures and fittings other than those mentioned are to be agreed with the seller. We cannot also confirm at this stage of marketing the tenure of this house.

Floor Plan

Area Map



Energy Efficiency Graph



These particulars, whilst believed to be accurate are set out as a general outline only for guidance and do not constitute any part of an offer or contract, purchaser should not rely on them as statements of representation of fact, but must satisfy themselves by inspection or otherwise as to their accuracy. No person in this firm's employment has the authority to make or give an representation or warranty in respect of the property.