



*Jordan fishwick*

Fernwood Marple Bridge Stockport

# Fernwood Marple Bridge Stockport SK6 5BE

£650,000



## The Property

Perfectly positioned towards the head of a no-through road within much sought after 'Marple Bridge' and its amenities, a superb detached executive bungalow. Superbly appointed throughout and boasting well proportioned accommodation with three double bedrooms. Pvc double glazing, gas central heating and comprising: entrance hall, wc, living room, dining room, conservatory, fitted breakfast kitchen central island and Granite tops, master bedroom with en-suite shower room, two further bedrooms and a bathroom with bath and separate shower. Generous private lawn gardens with mature flowerbeds, side garden with storage sheds, a sweeping driveway and a detached double garage with electric door. Viewing highly recommended.



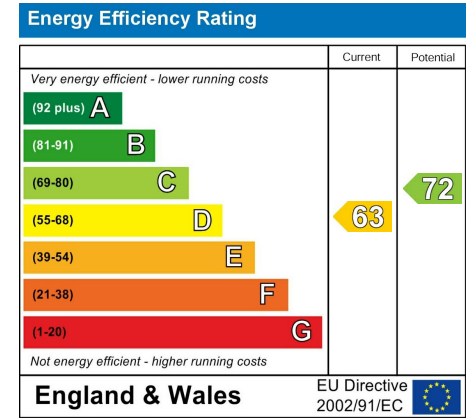
- Superb Sought After Location
- Head of a Cul-De-Sac
- Detached Executive Bungalow
- Three Double Bedrooms
- Immaculately Presented Throughout
- Generous Private Gardens
- Sweeping Driveway and Detached Double Garage
- Living Room, Dining Room and Conservaotry
- Fitted Kitchen With Island
- Spacious Bathroom Plus En-Suite Shower Room

**Postcode** SK6 5BE

**EPC Rating** D

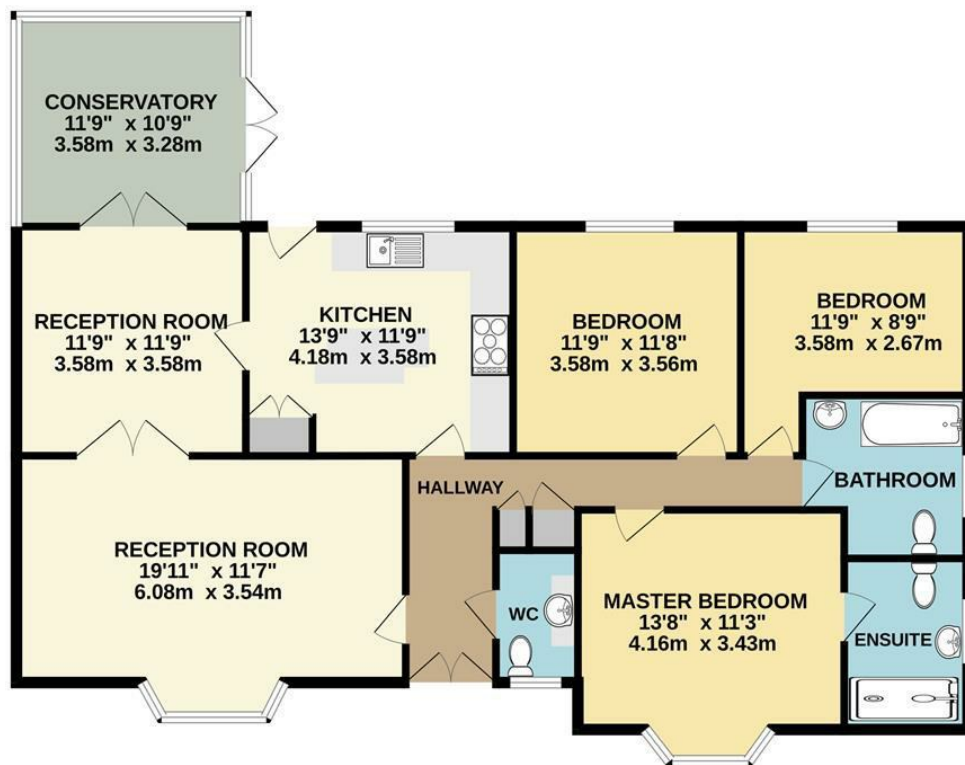
**Local Authority** Stockport

**Council Tax** F



GROUND FLOOR

OUTBUILDING



Whilst every attempt has been made to ensure the accuracy of the floorplan contained here, measurements of doors, windows, rooms and any other items are approximate and no responsibility is taken for any error, omission or mis-statement. This plan is for illustrative purposes only and should be used as such by any prospective purchaser. The services, systems and appliances shown have not been tested and no guarantee as to their operability or efficiency can be given.  
Made with Metropix ©2025



These particulars are believed to be accurate but they are not guaranteed and do not form a contract. Neither Jordan Fishwick nor the vendor or lessor accept any responsibility in respect of these particulars, which are not intended to be statements or representations of fact and any intending purchaser or lessee must satisfy himself by inspection or otherwise as to the correctness of each of the statements contained in these particulars. Any floorplans on this brochure are for illustrative purposes only and are not necessarily to scale.

Offices at: Chorlton, Didsbury, Disley, Hale, Glossop, Macclesfield, Manchester Deansgate, Manchester Whitworth Street, New Mills, Sale, Wilmslow and Withington

14 Market St, Disley, Cheshire, Stockport SK12 2AA

01663 767878

disley@jordanfishwick.co.uk  
www.jordanfishwick.co.uk