



## Graphite Court, 8 Arla Place - HA4 0FF

Guide Price £385,000 | Leasehold



**LAWRENCE RAND**



## Key Features & Description

- Two Bedrooms
- Two Bathrooms
- Inset Balcony
- Convenient Allocated Parking Directly Outside
- Walking Distance To Station
- Open Plan Kitchen/Reception Room
- Utility Room
- Built In Pantry

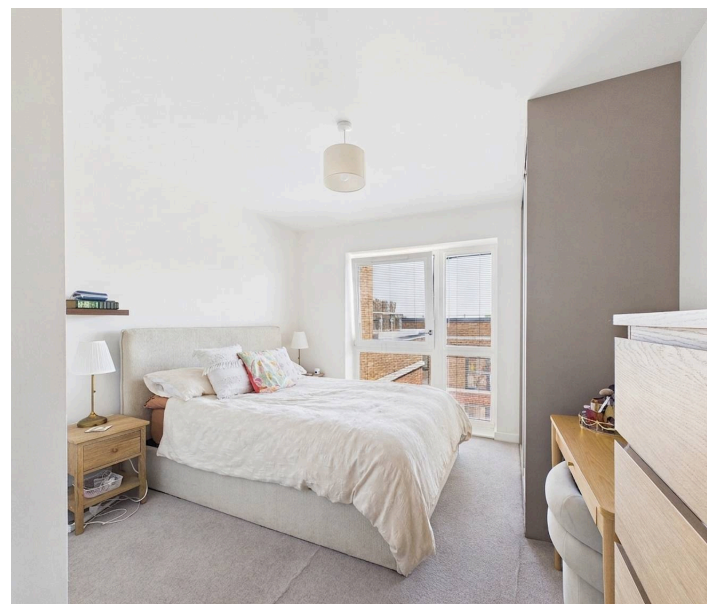
Situated in the sought-after **Arla Place**, this beautifully presented two-bedroom, two-bathroom apartment offers contemporary living in a well-connected location.

The property features a bright and spacious open-plan living and dining area, complemented by large windows that allow plenty of natural light throughout. The modern fitted kitchen is finished to a high standard with integrated appliances, ample storage, and sleek worktops, making it ideal for both everyday living and entertaining.

The principal bedroom is generously sized and benefits from built-in wardrobes along with a stylish en-suite shower room. A second well-proportioned double bedroom is served by a separate modern family bathroom, finished with quality fixtures and fittings.

Additional benefits include secure entry system access, allocated parking and well-maintained communal areas. Ideally located close to local amenities, shops, restaurants, and excellent transport links, including nearby stations providing convenient access into Central London.

**Presented with care by Lawrence Rand—helping you find the place you'll love to call home.**





### **Nearest Stations**

South Ruislip Station – approx 0.2 miles  
Ruislip Gardens Station – approx 0.6 miles  
West Ruislip Station – approx 0.8 miles

### **Verified Information:**

Council Tax band: D  
EPC Energy Efficiency Rating: B  
Lease Years Remaining 118

Service Charge

Ground Rent

### **Suppliers:**

Electricity supply: Mains, Water supply: Mains  
water, Sewerage: Mains

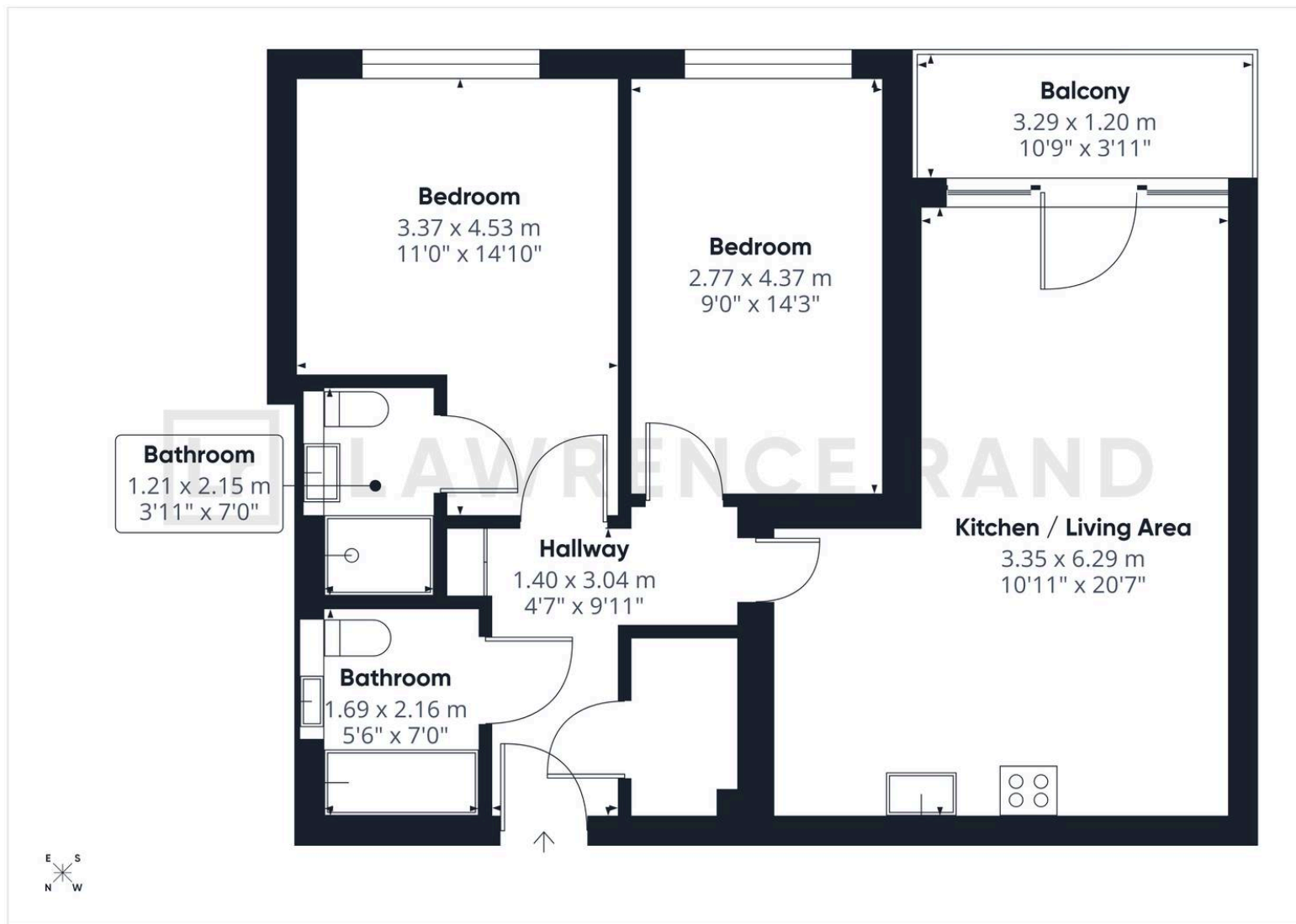
Heating: Gas central heating

### **Broadband & mobile coverage**

Broadband: FTTP (Fibre to the Premises)

Mobile coverage: O2 - Excellent, Vodafone -  
Excellent, Three - Excellent, EE - Excellent





## Lawrence Rand

51 Victoria Road, Ruislip - HA4 9BH

01895 632211

[Sales@lawrence-rand.co.uk](mailto:Sales@lawrence-rand.co.uk)

[www.lawrence-rand.co.uk/](http://www.lawrence-rand.co.uk/)

Lawrence Rand Limited has made every reasonable effort to ensure the accuracy of the information provided. However, we accept no responsibility for errors, omissions, or misstatements. All measurements, distances, and descriptions are approximate and for guidance only. Prospective purchasers or tenants must verify all details independently. Some images may include AI-generated virtual staging to illustrate the potential of the property and are for visual guidance only. No warranty is given or implied, and these particulars do not form part of any offer or contract. Lawrence Rand reserves the right to amend or withdraw any property without notice.