

Jamaica Street, E1

£510,000

 3  1  2  C

- Three Bedrooms
- Two Bathrooms
- Open Plan

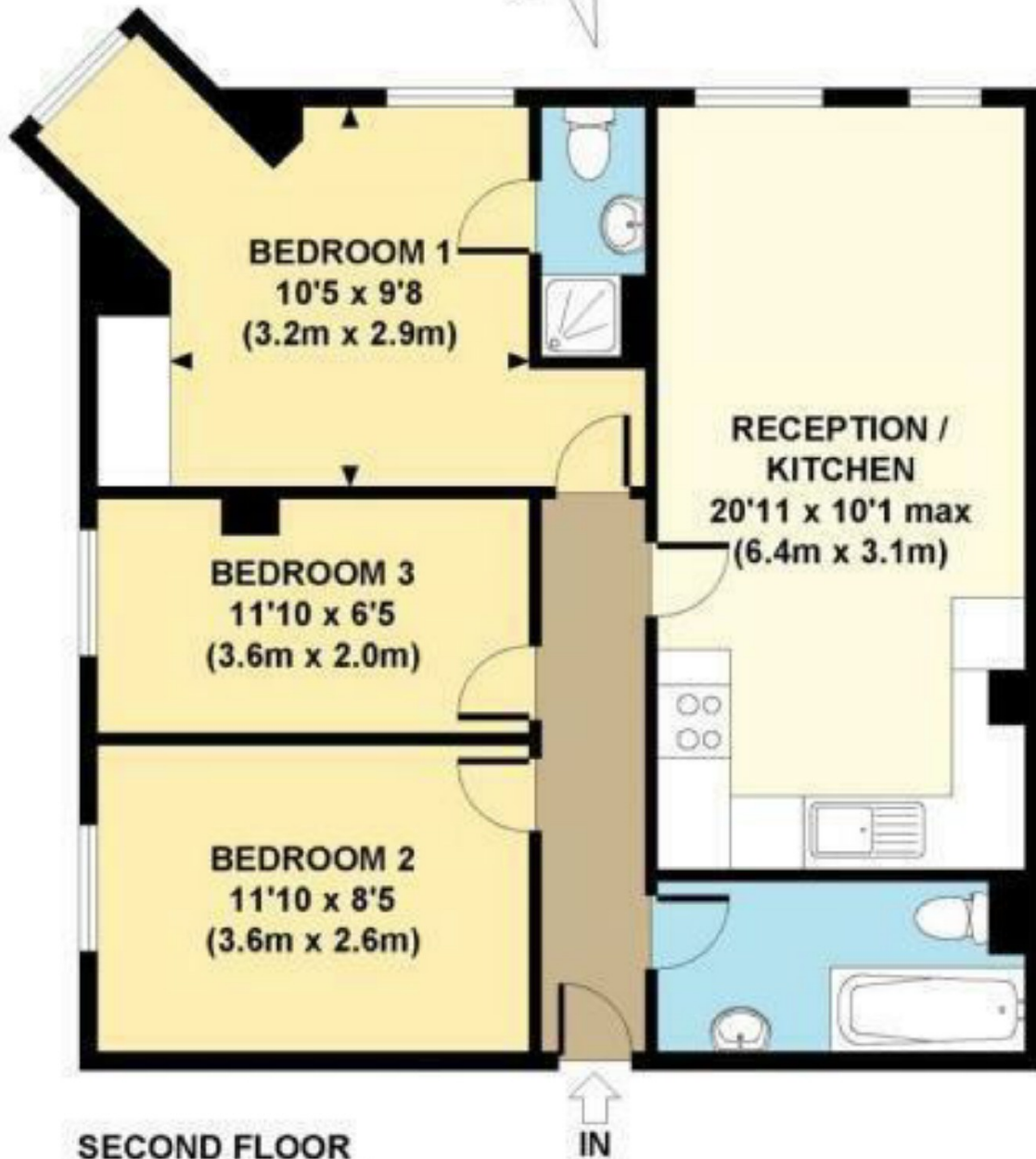
- Communal Garden
- Secure Parking Space
- Chain Free



A three bedroom, two bathroom apartment on the top floor within a gated development. The property offers a lounge with an open plan kitchen, communal garden, secure parking space and is offered chain free. The Seller has advised us that they are currently achieving a rental income of £2,800 per calendar month.

Ideally located close to Stepney Green station and local bus routes providing great access to the City, Spitalfields, Shoreditch & Canary Wharf. Close to Queen Mary University and the Royal London Hospital.





**SECOND FLOOR
GROSS INTERNAL
FLOOR AREA 665 SQ FT**

APPROX. GROSS INTERNAL FLOOR AREA 665 SQ FT / 62 SQ M

35A Wapping High Street,
London, E1W 1NR
020 7665 5589
ea2group.com



Energy Rating: C We aim to make our particulars both accurate and reliable. However they are not guaranteed; nor do they form part of an offer or contract. If you require clarification on any points then please contact us, especially if you're travelling some distance to view. Please note that appliances and heating systems have not been tested and therefore no warranties can be given as to their good working order.