



BEAUFORT GARDENS
KNIGHTSBRIDGE SW3



BEAUFORT GARDENS
KNIGHTSBRIDGE SW3

THIS DELIGHTFUL PROPERTY FEATURES ONE DOUBLE BEDROOM, ONE BATHROOM, A SPACIOUS RECEPTION ROOM, AND A FULLY FITTED KITCHEN. IT ALSO INCLUDES A SMALL BALCONY, PROVIDING A CHARMING OUTDOOR SPACE TO ENJOY.



With its prime location and excellent amenities, this flat is ideal for those looking to experience the best of Knightsbridge's exclusive lifestyle.

Beaufort Gardens is located in the heart of Knightsbridge, one of London's most prestigious and affluent districts, this well-presented first-floor flat offers the perfect blend of luxury and convenience. Knightsbridge is renowned for its high-end shopping, including iconic department stores like Harrods and Harvey Nichols, as well as its proximity to Hyde Park and other cultural attractions such as the Victoria and Albert Museum. The area is characterized by its stunning Georgian and Victorian architecture, making it a sought-after location for those seeking a luxurious lifestyle.

FACILITIES

- | One double bedroom
- | One bathroom
- | Balcony
- | Permit Parking (RBKC)



TERMS

Guide Price: £600,000

Leasehold: 89 years
(expires 23rd June 2115)

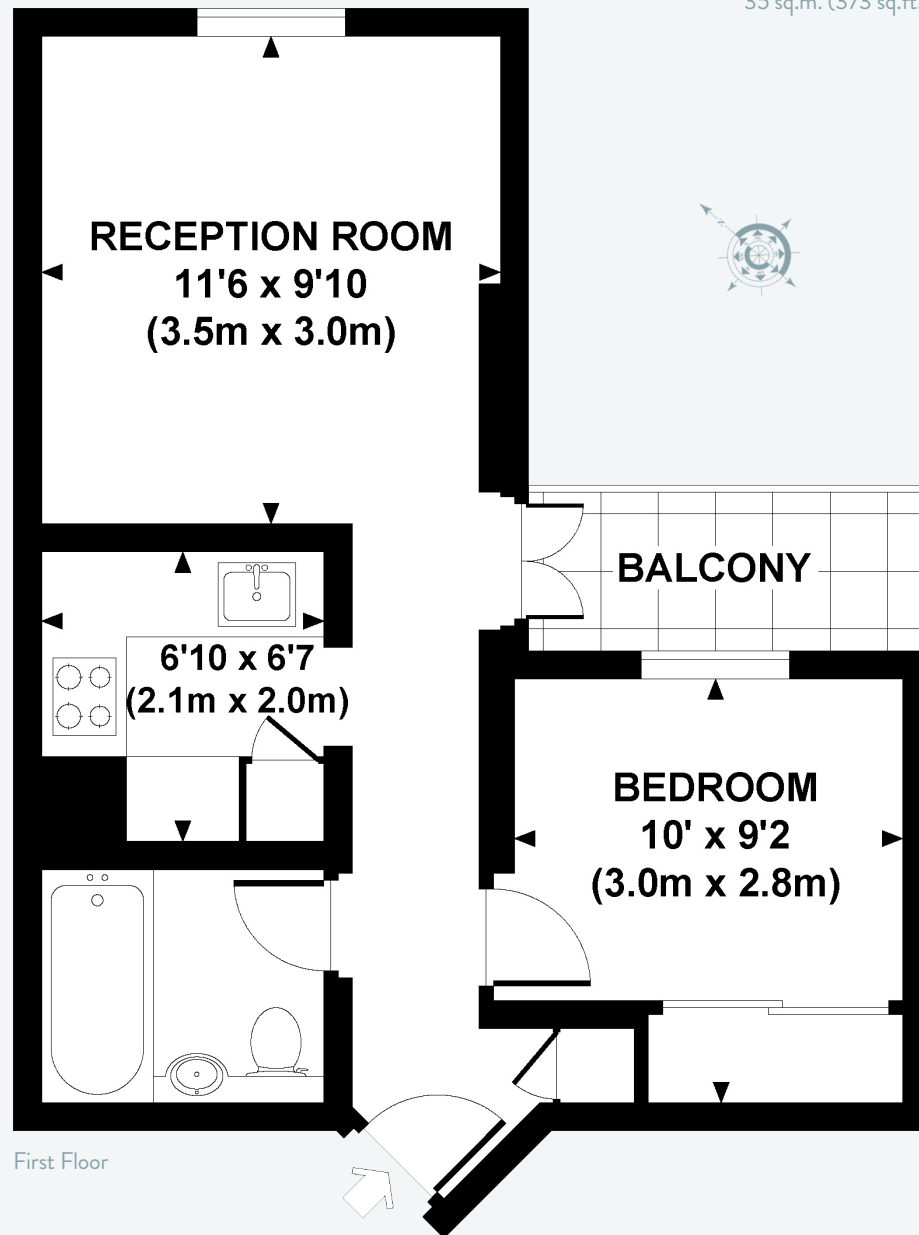
Service Charge: £5,812.82 Per annum

Ground Rent: Peppercorn

Local Authority: Kensington and Chelsea

Council tax: E

EPC: D



JLL Chelsea & Knightsbridge

2 Cale Street, London

SW3 3QU

020 7306 1610

These particulars are for general information only and do not constitute any part of an offer or contract. All statements contained therein are made without responsibility on the part of the vendors or lessors and are not to be relied upon as statement or representation of fact. Intending purchasers or lessees must satisfy themselves, by inspection, or otherwise, as to the correctness of each of the statements or dimensions contained in these particulars.