

1 Upminster Close, Monkston Park, Milton Keynes, MK10 9PZ  
£1,200 Per Month

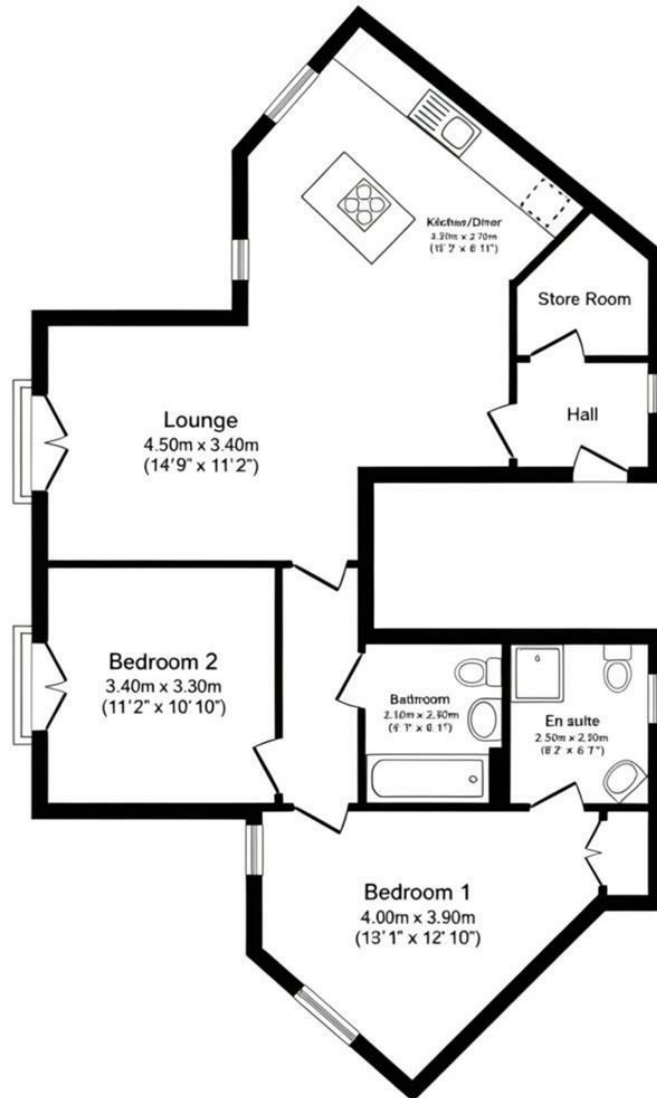


A well presented unfurnished ground floor apartment located within the highly sought after Monkston Park development in Milton Keynes, offering a perfect balance of modern living, comfort, and convenience.

The property opens into a welcoming entrance hall with useful built in storage, providing a practical first impression and leading through to a bright and spacious open plan living and kitchen area. The kitchen is well designed and fitted with integrated appliances, creating an ideal space for both everyday living and entertaining guests.

There are two generous double bedrooms, with the principal bedroom benefitting from its own en suite shower room. A well appointed main bathroom serves the second bedroom and visitors, completing a thoughtfully arranged and comfortable layout throughout.

Further benefits include gas central heating, off road parking, and the advantage of being situated within a well maintained residential setting.



**Floor Plan**



20 West Street  
 Dunstable  
 Bedfordshire  
 LU6 1SX  
 01582 661112  
[sales@robinsons-estates.co.uk](mailto:sales@robinsons-estates.co.uk)  
<https://www.robinsons-estates.co.uk>



Energy Efficiency Rating		Current	Potential
Very energy efficient - lower running costs			
(92 plus)	A		
(81-91)	B		
(69-80)	C	77	78
(55-68)	D		
(39-54)	E		
(21-38)	F		
(1-20)	G		
Not energy efficient - higher running costs			
<b>England &amp; Wales</b>		EU Directive 2002/91/EC	