



SPRING VIEW SCHOLEBROOK LANE

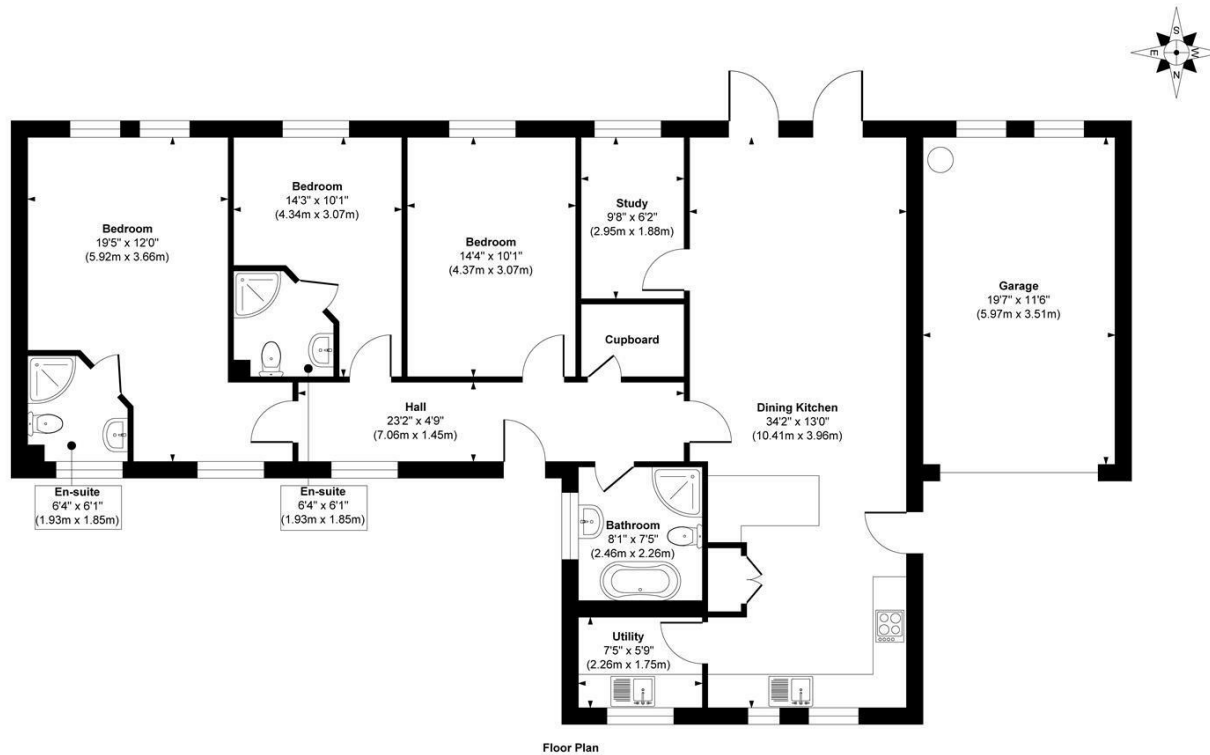
BRADFORD, BD4 0RN

£495,000
FREEHOLD

Monroe are proud to present Spring View... This development has been meticulously designed to offer exclusivity, space, and sustainability, with breath-taking countryside views and premium specifications throughout. Nestled within a private, gated setting, each home features solar panels ensuring the very best in modern, eco-friendly living!

MONROE

SELLERS OF THE FINEST HOMES



Energy Efficiency Rating		Current	Potential
Very energy efficient - lower running costs			
(92 plus) A		93	93
(81-91) B			
(69-80) C			
(55-68) D			
(39-54) E			
(21-38) F			
(1-20) G			
Not energy efficient - higher running costs			
England & Wales		EU Directive 2002/91/EC	

Approx. Gross Internal Floor Area 1557 sq. ft / 144.65 sq. m
 Illustration for identification purposes only, measurements are approximate, not to scale.
 Copyright © Zenith Creations.

Agents Note: Whilst every care has been taken to prepare these particulars, they are for guidance purposes only. All measurements are approximate and are for general guidance purposes only and whilst every care has been taken to ensure their accuracy, they should not be relied upon and potential buyers/tenants are advised to recheck the measurements

Land & New Homes
 1-3 The Avenue
 Alwoodley
 Leeds
 West Yorkshire
 LS17 7BD

0113 350 1444
 landandnewhomes@monroestateagents.com
 www.monroestateagents.com

MONROE

SELLERS OF THE FINEST HOMES