



Nightingale Road, N22

£1,750 Per calendar month

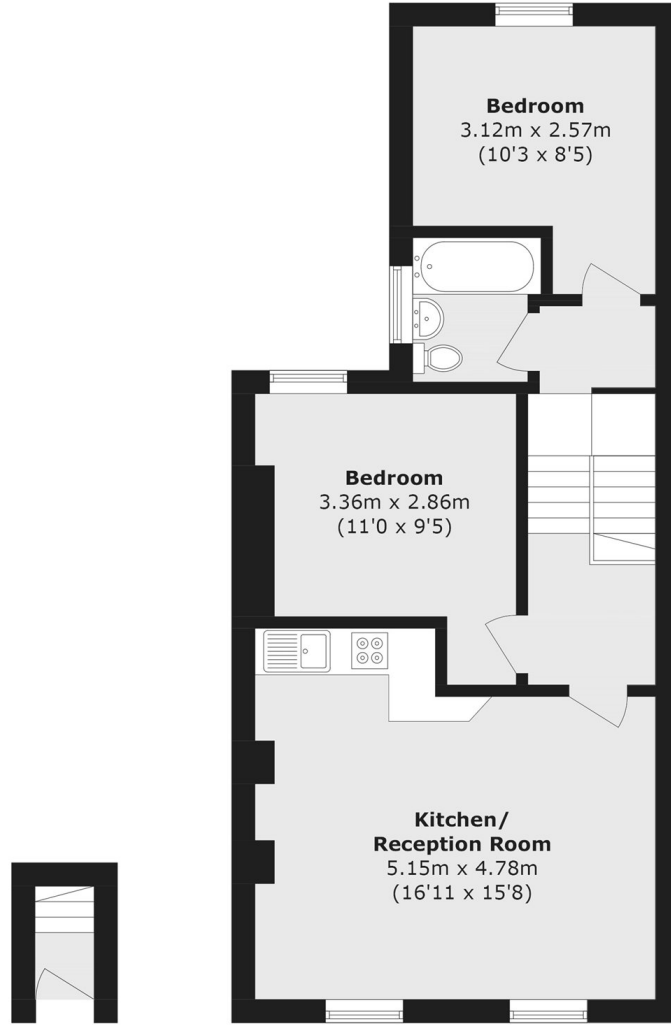
A bright and well presented two double bedroom first floor flat set within this period conversion. The flat has a bright reception room with bay windows, open plan modern kitchen and bathroom. Off Street Parking is optional for total rent of £1750pcm.

Nightingale Road is residential street which is located near Woodside park. It has excellent transport links with Bounds Green underground station and Bowes Park overground station a short walk from the property.

Features

- Two Double Bedrooms
- First Floor
- Period Conversion
- Wooden Floors
- Open Plan Reception Room
- Bounds Green
- Optional Off Street Parking

Nightingale Road,
London, N22



Ground Floor

First Floor

Total Area (approx.): 56.1 sq. m (603.8 sq. ft)