



7 Park Road Quarry Bank, Brierley Hill, DY5 2DD

Park Road is a well-presented family home offering spacious and practical accommodation throughout. The property features a welcoming entrance hallway leading to a bright front lounge with a bay window, and a generous open-plan kitchen/dining room fitted with modern units, integrated appliances, and sliding doors opening onto the rear garden—ideal for everyday living and entertaining.

Additional ground floor accommodation includes a useful utility room, separate WC, and boiler cupboard providing excellent storage and convenience.

To the first floor, there are three well-proportioned bedrooms along with a modern family bathroom fitted with a three-piece suite and shower over bath.

Further benefits include UPVC double glazing, gas central heating, and a thoughtful layout designed for comfortable family living.

Offers Over £240,000

7 Park Road

Quarry Bank, Brierley Hill, DY5 2DD



Lounge

Kitchen/Diner

Utility Room

W.C.

Landing

Bedroom One

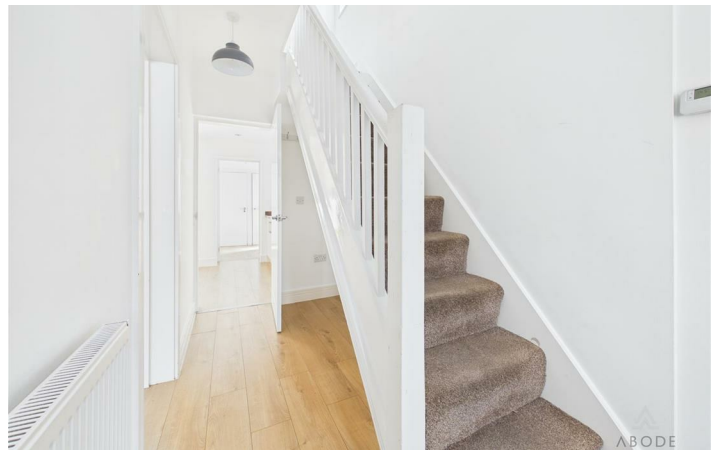
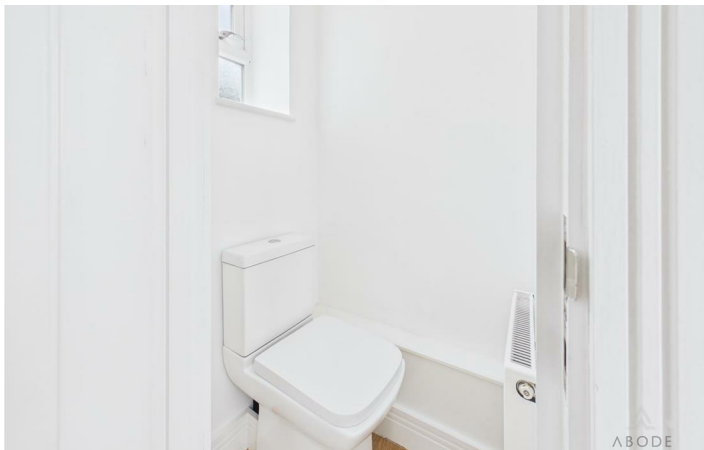
Bedroom Two

Bedroom Three

Bathroom



[Directions](#)



Floor Plan



These particulars, whilst believed to be accurate are set out as a general outline only for guidance and do not constitute any part of an offer or contract. Intending purchasers should not rely on them as statements of representation of fact, but must satisfy themselves by inspection or otherwise as to their accuracy. No person in this firm's employment has the authority to make or give any representation or warranty in respect of the property.

Racecourse Chambers Town Meadow Way, Uttoxeter, Staffordshire, ST14 8EW
Tel: 01889 567777 Email: uttoxeter@abodemidlands.co.uk <https://www.abodemidlands.co.uk>

