



## Overhill Road, SE22

£625,000

A beautifully presented and newly refurbished two bedroom maisonette on Overhill Road offering just under 800 sq ft of well arranged living space, alongside a private south facing garden.

Overhill Road is a quiet residential street well positioned for both East Dulwich and Peckham Rye, with a wide selection of independent shops, cafes and restaurants nearby, as well as access to green spaces and strong transport links into central London.

### Features

- Two Bedroom Maisonette
- South Facing Garden
- 791 Square Foot
- Beautifully Presented
- Newly Refurbished
- Close To Green Spaces

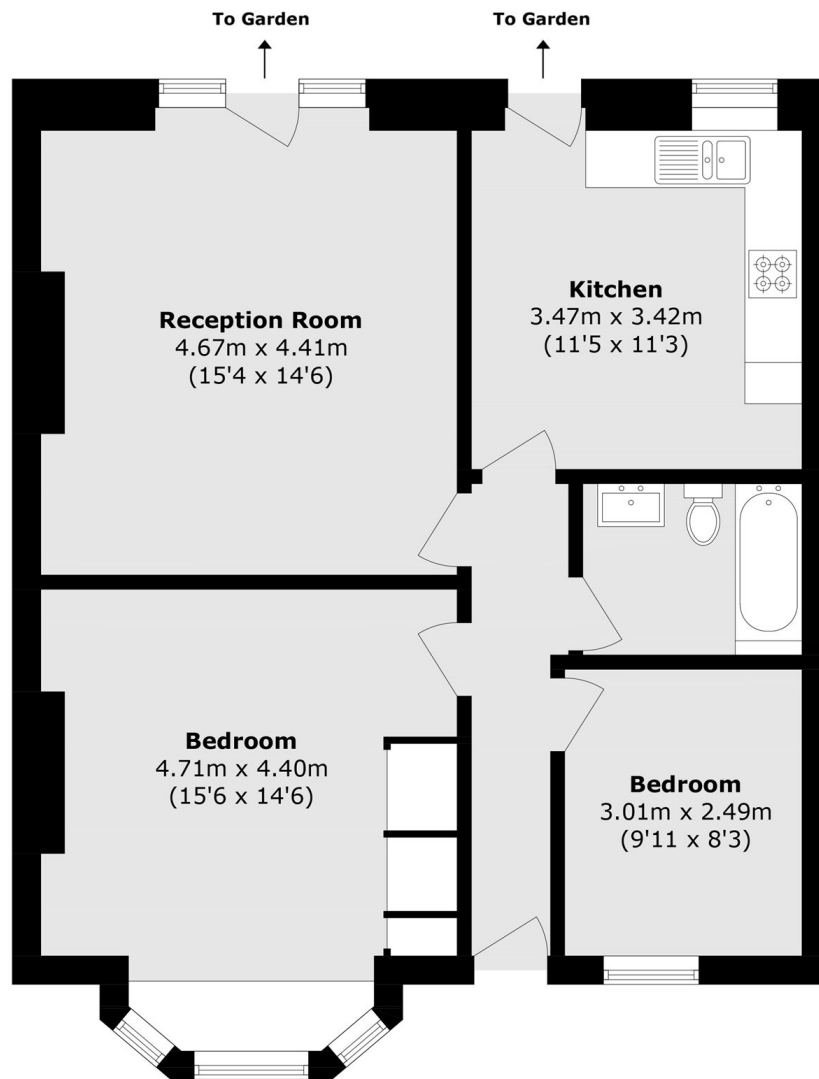


## Overhill Road, SE22

The property comprises a generous reception room with direct access onto the garden, a separate modern kitchen, two well proportioned double bedrooms and a contemporary bathroom. The layout provides excellent proportions throughout, with natural light enhanced by the south facing aspect and direct outdoor access creating an ideal space for both everyday living and entertaining. There is also a well maintained front garden giving you separation from the street.



# Overhill Road, London, SE22



Total area (approx.): 73.5 sq. m (791.3 sq. ft)