



NICK BROWNE

exp<sup>®</sup> UK

@ [nick.browne@exp.uk.com](mailto:nick.browne@exp.uk.com)

🌐 [nickbrowne.exp.uk.com](http://nickbrowne.exp.uk.com)

☎ 07883 448 911

58 Morpeth Crescent,  
£395,000

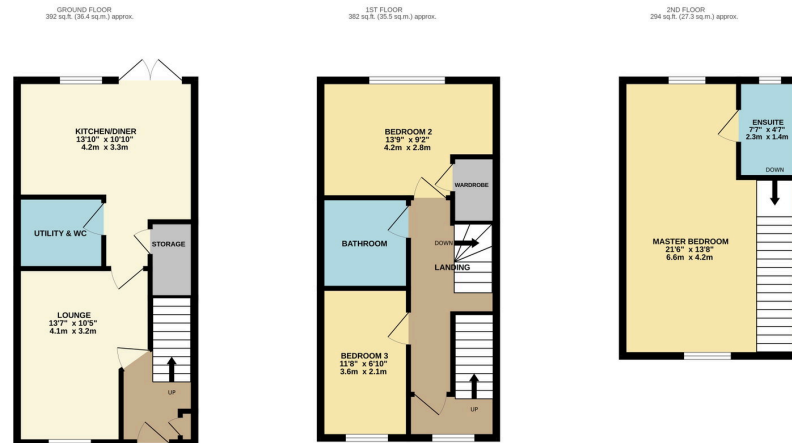
🛏️ 3 🚿 2 🚗 1



- Exceptional dual aspect master suite
- Driveway
- Combined utility room and W/C
- Three bedrooms
- Great access to M1 Junction 11a
- En-suite to master
- Kitchen diner
- Generous second bedroom with large built-in wardrobe
- Semi-detached
- Ref: NB 1604



A stunning Three-bedroom, three-storey semi-detached home in Thorn, Houghton Regis. Exceptional master suite, modern kitchen diner, driveway, 2 bathrooms plus a combined utility room and W/C.



TOTAL FLOOR AREA: 1068 sq ft. (99.2 sq.m.) approx.  
 Whilst every attempt has been made to ensure the accuracy of the floorplan contained here, measurements of floors, windows, doors and any other items are approximate and no responsibility is taken for any error, omission or mis-statement. This plan is for illustrative purposes only and should be relied on solely for any prospective purchase. The services, systems and appliances shown have not been tested and no guarantee as to their operability or efficiency can be given.  
 Made with Memopix (2020)

