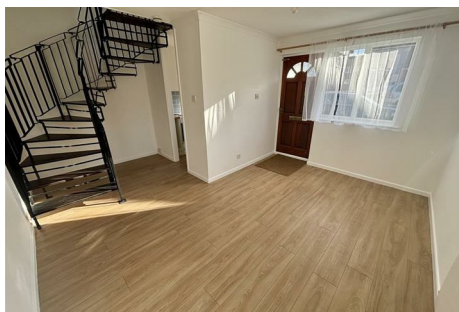


# Isaac Estates

Sales and Lettings



## Raedwald Drive

, Bury St. Edmunds, IP32 7DA

Isaac Estates are delighted to market this modern one bedroom home situated on the popular Moreton Hall Development

The property is set over two floors and offers sitting room, modern kitchen with electric oven and hob included, there is a spiral staircase that leads to the first floor landing, good sized double bedroom with wardrobes included and family bathroom. Externally there is a private lawn garden.

Viewing highly recommended. Sorry no pets. Would suit single occupancy

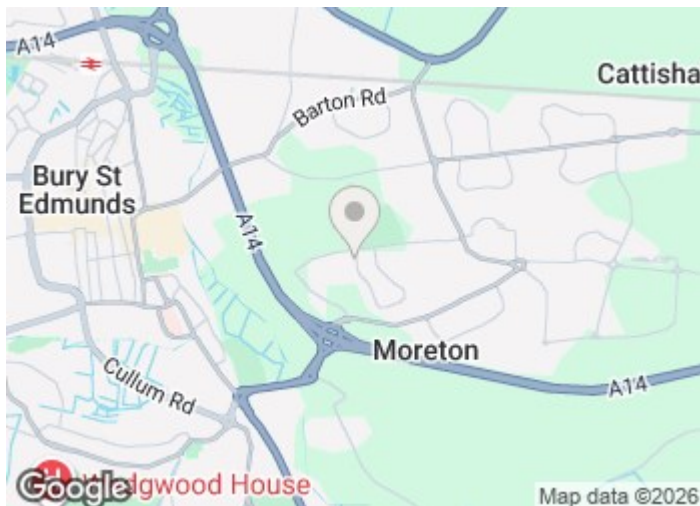
£875 Per month

# Raedwald Drive

, Bury St. Edmunds, IP32 7DA



- MODERN HOME SITUATED ON THE POPULAR MORETON HALL DEVELOPMENT
- SITTING ROOM, MODERN KITCHEN WITH ELECTRIC OVEN AND HOB
- SPIRAL STAIRCASE LEADING TO FIRST FLOOR
- ONE DOUBLE BEDROOM WITH WARDROBE
- FAMILY BATHROOM, ELECTRIC HEATING
- PRIVATE LAID TO LAWN GARDEN AREA
- MINIMUM TERM CONTRACT TWELVE MONTHS
- EPC 59D, COUNCIL TAX BAND A



[Directions](#)





# Floor Plan

These particulars, whilst believed to be accurate are set out as a general outline only for guidance and do not constitute any part of an offer or contract. Intending purchasers should not rely on them as statements of representation of fact, but must satisfy themselves by inspection or otherwise as to their accuracy. No person in this firm's employment has the authority to make or give any representation or warranty in respect of the property.

12 Langton Place, Hatter Street, Bury St Edmunds, Suffolk, IP33 1NE  
Tel: 01284 620011 Email: [ryan@isaacestates.co.uk](mailto:ryan@isaacestates.co.uk) [www.isaacestates.co.uk](http://www.isaacestates.co.uk)

