

Kings Avenue, SW4

£2,650 Per calendar month

An attractive flat on the first floor of a Victorian conversion. Offering a reception room and kitchen with wooden flooring and an exposed brick wall, along with a private balcony and gated parking.

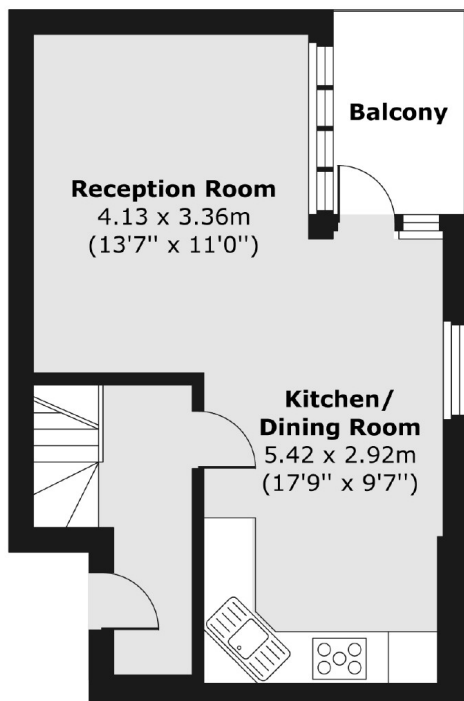
Located at the Clapham end of Kings Avenue, the property rests just behind Abbeville Village with its many boutique shops, restaurants and cafés. Clapham Common underground is also just a stroll away.

Features

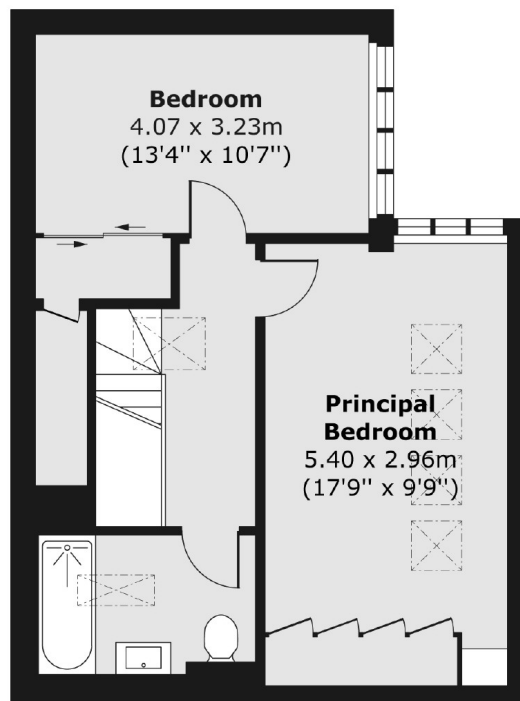
- Two Double Bedrooms
- Open Plan Reception
- Split-Level
- Gated Parking
- Exposed Brickwork
- Private Balcony

Kings Avenue, London, SW4

First Floor



Second Floor



Total area (approx.) 74.40 sq. m (801 sq. ft)
Balcony area (approx.) 3.97 sq. m (43 sq. ft)