



South Close | | Beccles | NR34 9PB

Asking Price £415,000

**DURRANTS**  
SINCE 1853

## Key features

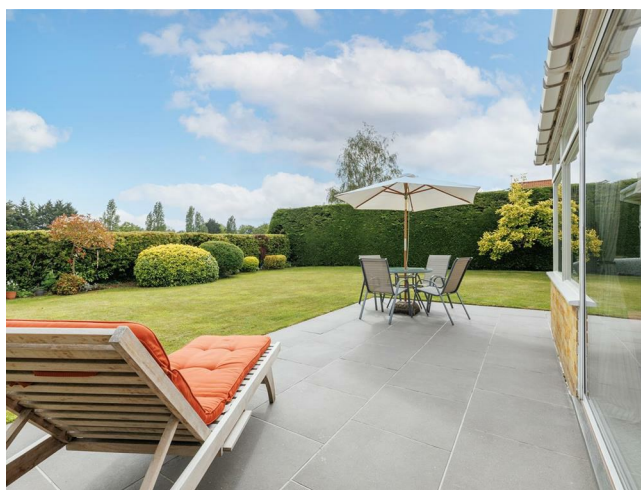
- Three bedroom detached bungalow
- Sought after, quiet cul-de-sac location
- Beautiful field views to the rear
- Spacious lounge with woodburning stove
- Dining room and garden room
- Recently refitted kitchen
- Recently refurbished bathroom
- Oversized garage with workshop and utility areas
- Generous and well maintained south facing gardens
- No onward chain

## Description

**NO CHAIN! FIELD VIEWS TO REAR! CUL DE SAC POSITION!**

Situated in a highly sought after cul-de-sac within the popular market town of Beccles, this well presented three bedroom detached bungalow offers spacious and versatile accommodation together with attractive gardens and delightful field views to the rear.

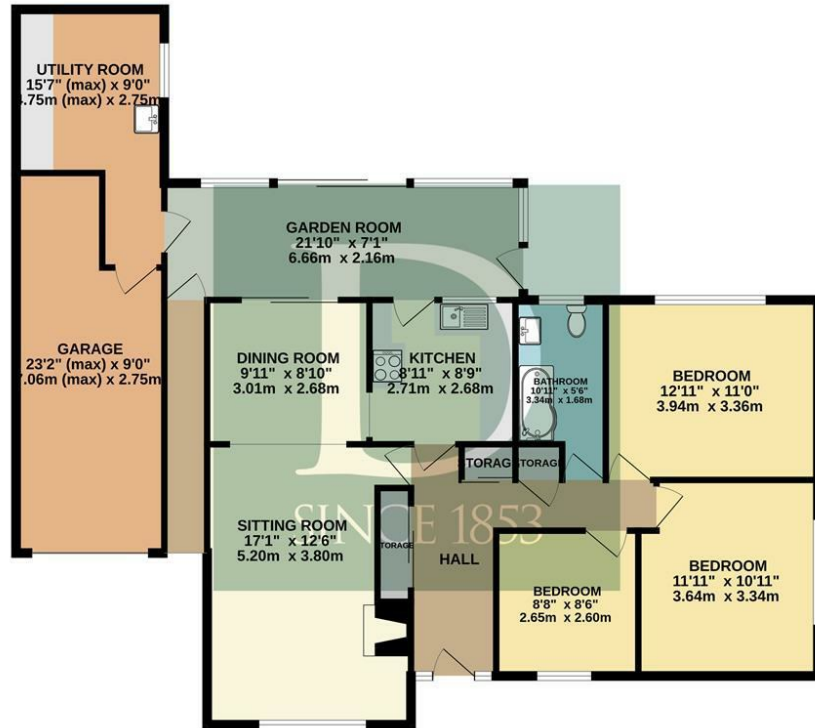
## Directions





# Floor plans

GROUND FLOOR  
1376 sq.ft. (127.8 sq.m.) approx.



TOTAL FLOOR AREA: 1376 sq.ft. (127.8 sq.m.) approx.  
Whilst every attempt has been made to ensure the accuracy of the floorplan contained here, measurements of doors, windows, rooms and any other items are approximate and no responsibility is taken for any error, omission or mis-statement. This plan is for illustrative purposes only and should be used as such by any prospective purchaser. The services, systems and appliances shown have not been tested and no guarantee as to their operability or efficiency can be given.  
Made with Metropix (2020)

Energy Efficiency Rating		
	Current	Potential
Very energy efficient - lower running costs		
(92 plus) <b>A</b>		
(81-91) <b>B</b>		
(69-80) <b>C</b>		
(55-68) <b>D</b>		
(39-54) <b>E</b>		
(21-38) <b>F</b>		
(1-20) <b>G</b>		
Not energy efficient - higher running costs		
<b>England &amp; Wales</b>	EU Directive 2002/91/EC	



10 New Market  
Beccles  
Suffolk  
NR34 9HA  
01502 712122  
infobeccles@durrants.com  
<https://durrants.com/>