



## THIRSK ROAD, SW11

£825,000

Two double bedrooms  
Beautiful design  
Private entrance  
1,100 Square ft  
Share of freehold  
Close to common

@marshandparsons  
marshandparsons.co.uk

MARSH &  
PARSONS



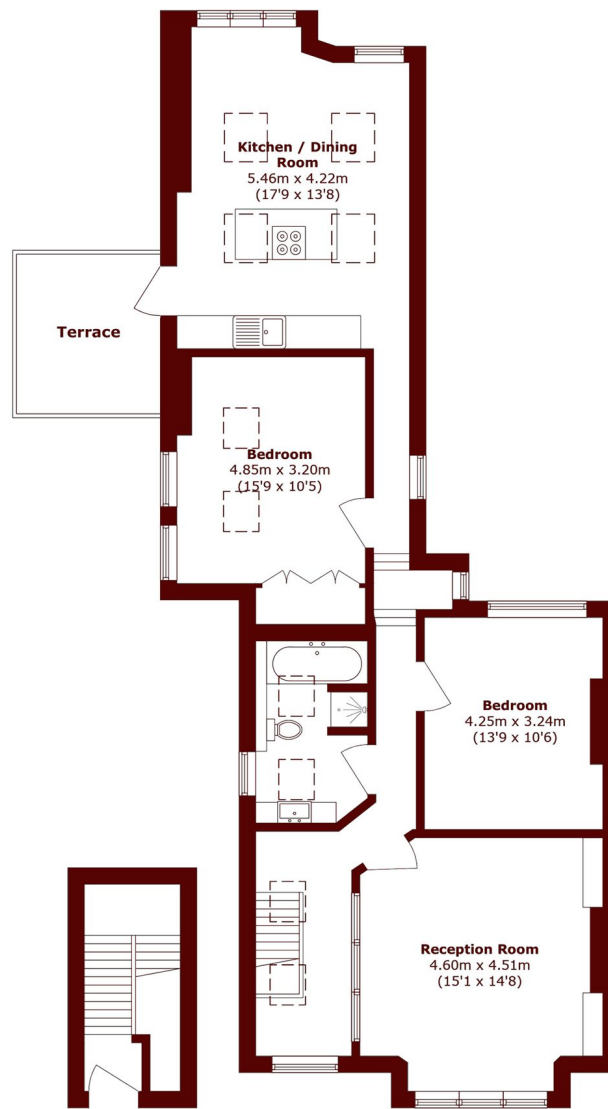
# ABOUT THE PROPERTY

Positioned on the second floor of a stunning Victorian building, this two double bedroom maisonette, spanning 1,100 square ft, has been beautifully designed, with tall vaulted ceilings, hard wood flooring and an incredible kitchen dining area.

Thirsk Road is beautiful street, conveniently positioned between Clapham Common and Lavender Hill, offering a wide range of local shops pubs and coffee shops. There is easy access to Clapham Junction Station with frequent services both in and out of London.



# STEP INSIDE THIRSK ROAD



**First Floor**

**Second Floor**

Total area (approx.): 102.2 sq. m (1100.1 sq. ft)

Terrace area (approx.): 7.6 sq. m (81.8 sq. ft)

**Battersea**  
020 7326 9920

Energy Rating: E We aim to make our particulars both accurate and reliable. However, they are not guaranteed; nor do they form part of an offer or contract. If you require clarification on any points then please contact us, especially if you're traveling some distance to view. Please note that appliances and heating systems have not been tested and therefore no warranties can be given as to their good working order

**MARSH &  
PARSONS**