



Clephane Road, N1

£625,000

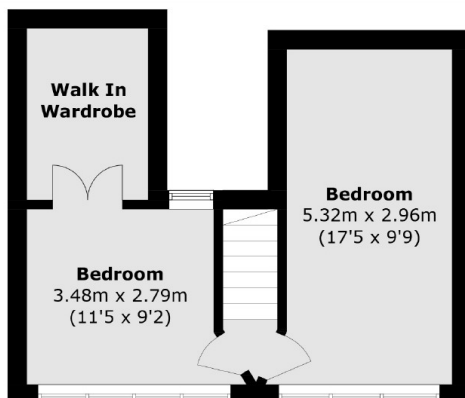
A three bedroom split level apartment on the top floor of a small purpose built block. This lovely home has a south facing balcony an open plan kitchen reception room and allocated off street parking.

Clephane Road is only a few minutes from Essex Road Station (National Rail) and Canonbury Station (Overground) or a short bus ride to Highbury and Islington (Overground and Victoria Line) and Angel Station (Northern Line). Shops, cafes, pubs and restaurants that Upper Street and Essex Road have to offer are also only a short walk away.

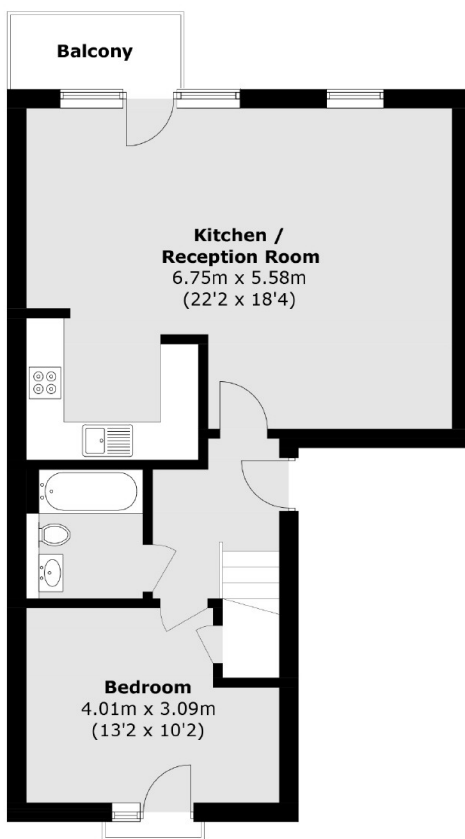
Features

- Three Bedrooms
- Split Level
- Chain Free
- South Facing Balcony
- Open Plan Kitchen
- Off Street Parking
- Secure Bike Shed

Clephane Road, London, N1



Fourth Floor



Third Floor

Total area (approx.): 89.4 sq. m (962.3 sq. ft)
Balcony: 3.2 sq. m (34.4 sq. ft)