



9 Skylark Road, Brimington, Chesterfield, S43 1FG

Price Guide £450,000

- 5 double bedrooms
- Guide price £450,000 - £460,000
- A further double bedroom with ensuite shower room
- Ideal family home still under builders warrantee
- Large kitchen diner
- Utility room and Wc
- Off street parking a garage
- Office/playroom
- Master bedroom with ensuite shower room and built in wardrobes
- Indian pavers, decked seating area and lawn

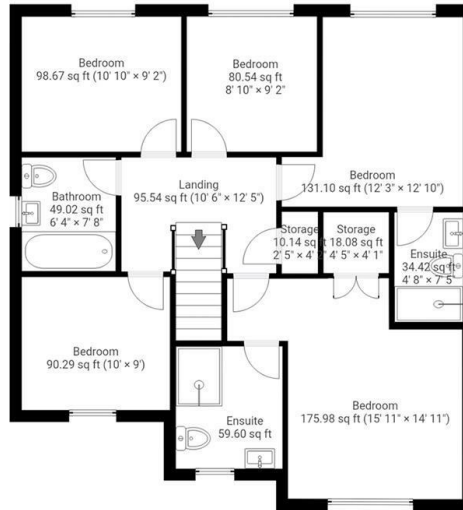
Skylark Road, S43
 DETAILS
 Total area: 1905.84 sq ft



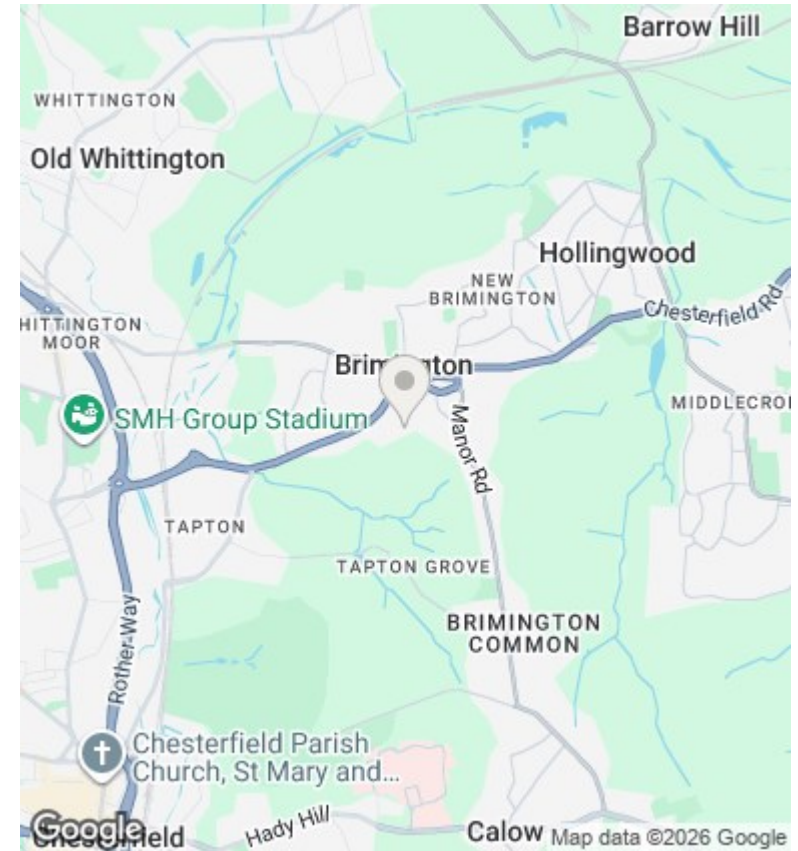
▼ **Ground Floor** TOTAL AREA: 1063.06 sq ft



▼ **1st Floor** TOTAL AREA: 842.79 sq ft



This floorplan is provided without any warranty. The actual size of dimensions may vary and this floorplan is intended for illustrative purposes only.



Directions

Viewings

Viewings by arrangement only. Call 01246 276 276 to make an appointment.

Council Tax Band

A

EPC Rating:

B

Energy Efficiency Rating		
	Current	Potential
Very energy efficient - lower running costs		
(92 plus) A		93
(81-91) B	85	
(69-80) C		
(55-68) D		
(39-54) E		
(21-38) F		
(1-20) G		
Not energy efficient - higher running costs		
England & Wales	EU Directive 2002/91/EC	