



OVER 60?

Secure this property
for up to **59% less!**

Guide Price

£450,000

Freehold

3x  1x  1x 

**Okehampton Crescent,
Welling, Kent, DA16**

Wards
Helping you move forwards



Main features

- Chain free
- Driveway
- Conservatory and summer house
- Walking distance to several transport links
- Potential to extend to the side and rear subject to planning permission

Accommodation

GROUND FLOOR

Entrance Porch
Kitchen: 11'8 x 6'3 (3.56m x 1.91m)
Lounge/Diner: 23'1 x 10'9 (7.04m x 3.28m)
Conservatory

FIRST FLOOR

Landing
Bedroom 1: 13'4 x 11'0 (4.07m x 3.36m)
Bedroom 2: 11'9 x 10'6 (3.58m x 3.20m)
Bedroom 3: 8'4 x 6'3 (2.54m x 1.91m)
Shower Room

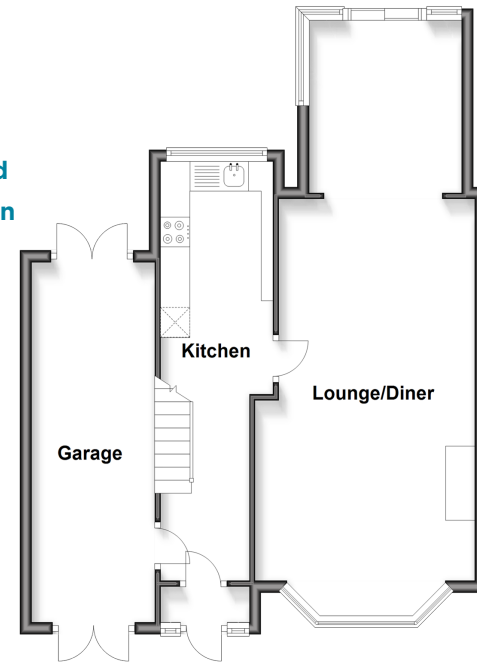
OUTSIDE

Front Garden
Rear Garden
Garage

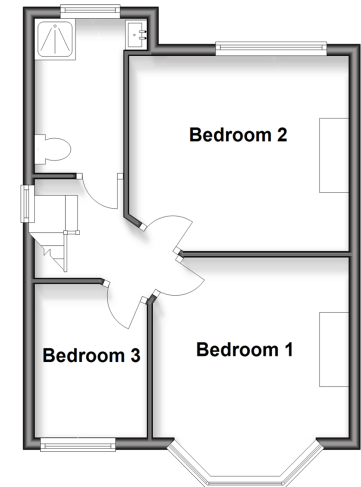
OUTBUILDING

Workshop

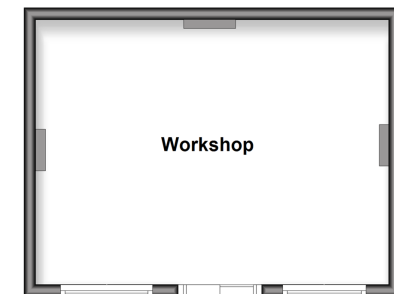
Ground Floor
Approx. 58.5 sq. metres (629.4 sq. feet)



First Floor
Approx. 35.6 sq. metres (383.3 sq. feet)



Outbuilding
Approx. 26.9 sq. metres (289.6 sq. feet)



Call Welling - 020 8301 6679 ■ wardsof Kent.co.uk

- Legal advice should be taken to verify fixtures/fittings, planning, alterations and/or lease details
- Appliances & services are untested, dimensions are approximate and floor plans are not to scale
- Through a Homewise Home For Life Plan people aged 60+ can secure this property for up to 59% less, by purchasing a Lifetime Lease



15008735/20260117/PB/LK