



## 47 John Street, Maesteg, CF34 0BL

### Reduced To £135,000

Nestled in the charming area of Nantffyllon, Maesteg, this delightful end terrace house on John Street offers a perfect blend of comfort and convenience. The ground floor accommodation briefly comprises a welcoming reception room, perfect for relaxing or entertaining guests, bathroom, conservatory and kitchen/diner. The first floor accommodation briefly comprises a shower room and three well-proportioned bedrooms with dressing room to master. This property is ideal for families or those seeking extra space with ample facilities for busy mornings or unwinding after a long day. Situated in a friendly neighbourhood, residents will enjoy easy access to local amenities, schools, and parks, making it an excellent choice for families and professionals alike. The surrounding area offers a variety of outdoor activities, ensuring that there is always something to do. Whether you are a first-time buyer or seeking a new family residence, this end terrace house on John Street is certainly worth considering.

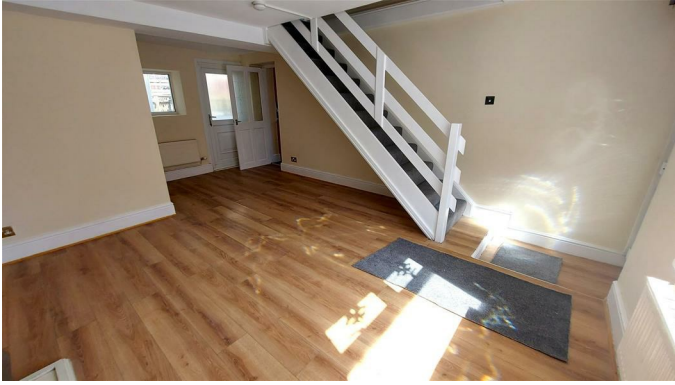
Tenure = Freehold (TBC by a legal representative)

EPC = C

Council Tax Band = B

## Ground Floor

### Lounge 19'0" x 12'9" (5.8 x 3.9)



Entry via uPVC double glazed door. Skimmed ceiling, skimmed walls, fitted carpet, carpeted stairs to first floor, two radiators, uPVC double glazed window to front, door to inner hallway, door to conservatory and door to:

### Kitchen/Diner 20'8" x 7'10" (6.3 x 2.4)



Skimmed ceiling, skimmed and tiled walls, vinyl flooring, radiator, two uPVC double glazed windows to side and front, a range of base and wall mounted units with a complementary work surface housing a stainless steel sink and drainer, range-style cooker, space for washing machine and American fridge freezer.

### Conservatory 11'9" x 7'10" (3.6 x 2.4)



Polycarbonate roof, uPVC double windows to side and rear, radiator, uPVC double glazed door to rear garden.

## Inner Hallway



Skimmed ceiling, skimmed walls, vinyl flooring, and door to:

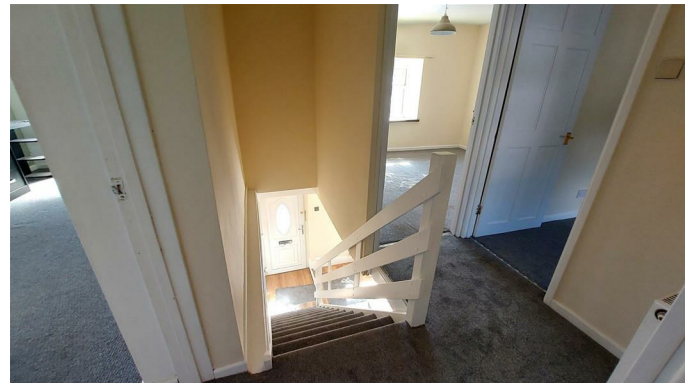
### Bathroom 7'6" x 4'11" (2.3 x 1.5)



Skimmed and coved ceiling, skimmed and tiled walls, vinyl flooring, uPVC double glazed window with obscured glass to rear, chrome towel rail radiator and a three piece suite comprising a panel bath, low level W.C with concealed cistern and a wash hand basin set on a vanity unit.

## First Floor

### Landing



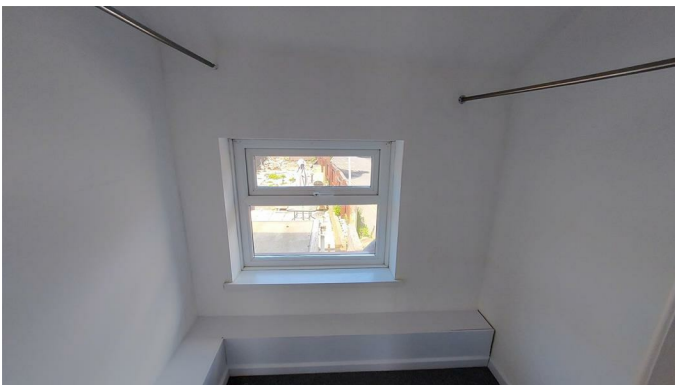
Skimmed ceiling with loft access, skimmed walls, radiator, fitted carpet and four doors off

Bedroom One 15'8" x 9'2" (4.8 x 2.8)



Skimmed ceiling and walls, fitted carpet, radiator, two uPVC double glazed windows to front and side and door to:

Dressing Room 5'10" x 4'7" (1.8 x 1.4)



Skimmed ceiling and walls, fitted carpet and uPVC double glazed window to rear.

Bedroom Two 10'5" x 9'10" (3.2 x 3.0)



Skimmed ceiling and walls, fitted carpet, radiator, uPVC double glazed window to front.

Bedroom Three 8'10" x 7'10" (2.7 x 2.4)



Skimmed ceiling and walls, fitted carpet, radiator, uPVC double glazed window to rear.

Shower Room 9'2" x 3'7" (2.8 x 1.1)



Skimmed ceiling, tiled walls, tiled flooring, chrome towel rail radiator, a three piece suite comprising a shower cubicle, low level W.C and wall mounted wash hand basin.

Rear Garden



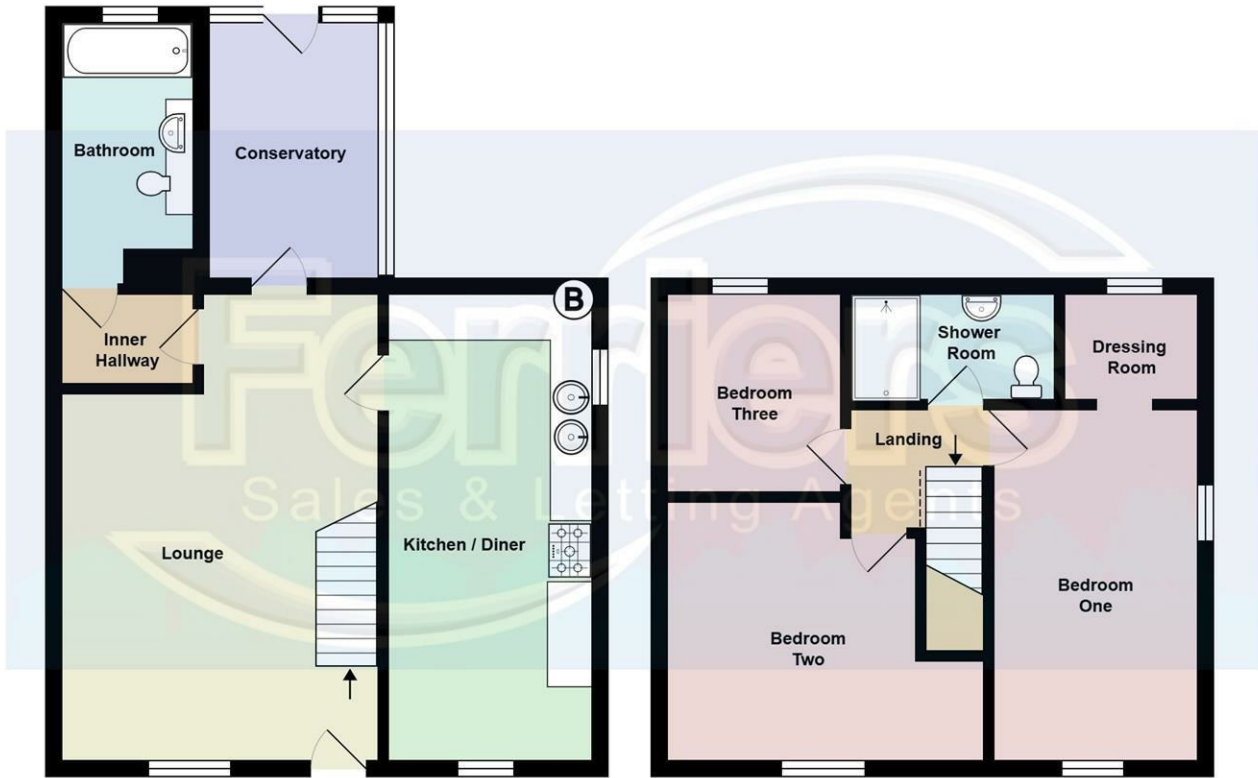
Area laid to patio, steps lead to a further area laid with decorative pea shingle, bordered with block walls and wood panelled fencing.

#### Disclaimer

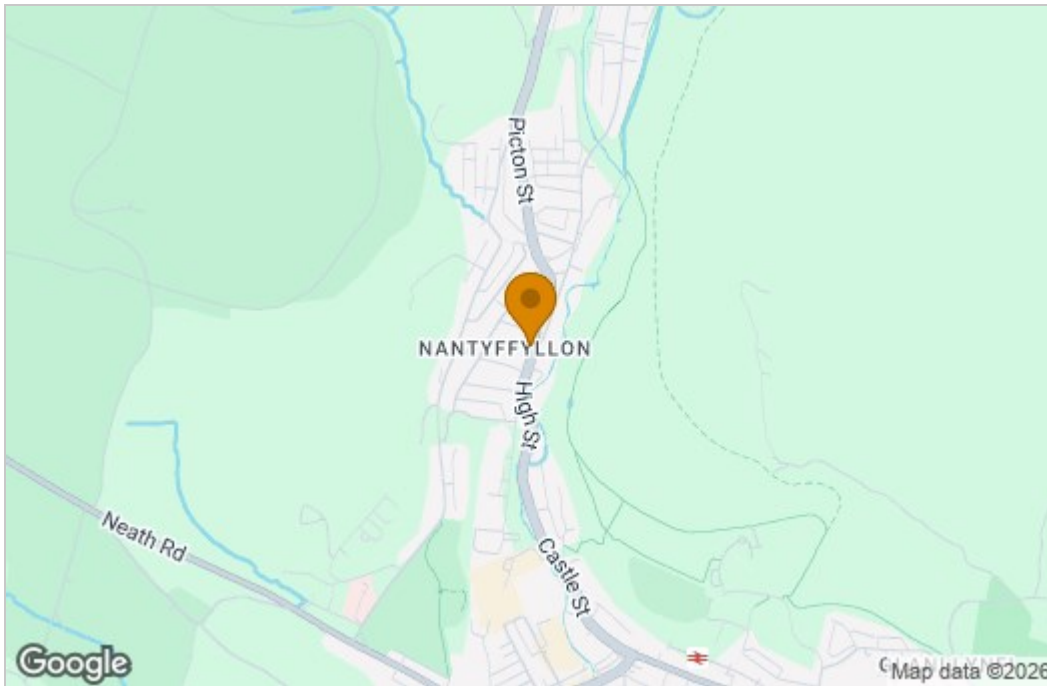
The information contained within this advertisement is intended as a guide only and does not constitute an offer or contract. While every effort has been made to ensure accuracy, measurements are approximate and provided for indicative purposes only. All marketing content remains the copyright of

Ferriers Estate Agents and may not be copied or reproduced without prior written consent. Marketing images are for illustrative purposes. Contents and furnishings are excluded from the sale unless expressly stated otherwise.

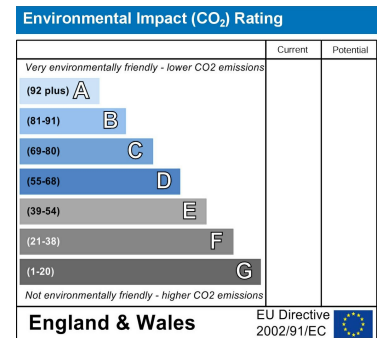
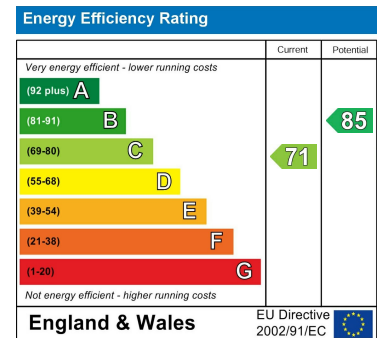
# Floor Plan



# Area Map



# Energy Efficiency Graph



These particulars, whilst believed to be accurate are set out as a general outline only for guidance and do not constitute any part of an offer or contract. Intending purchasers should not rely on them as statements of representation of fact, but must satisfy themselves by inspection or otherwise as to their accuracy. No person in this firm's employment has the authority to make or give any representation or warranty in respect of the property.