

Ben Allman
Estate & Letting Agents



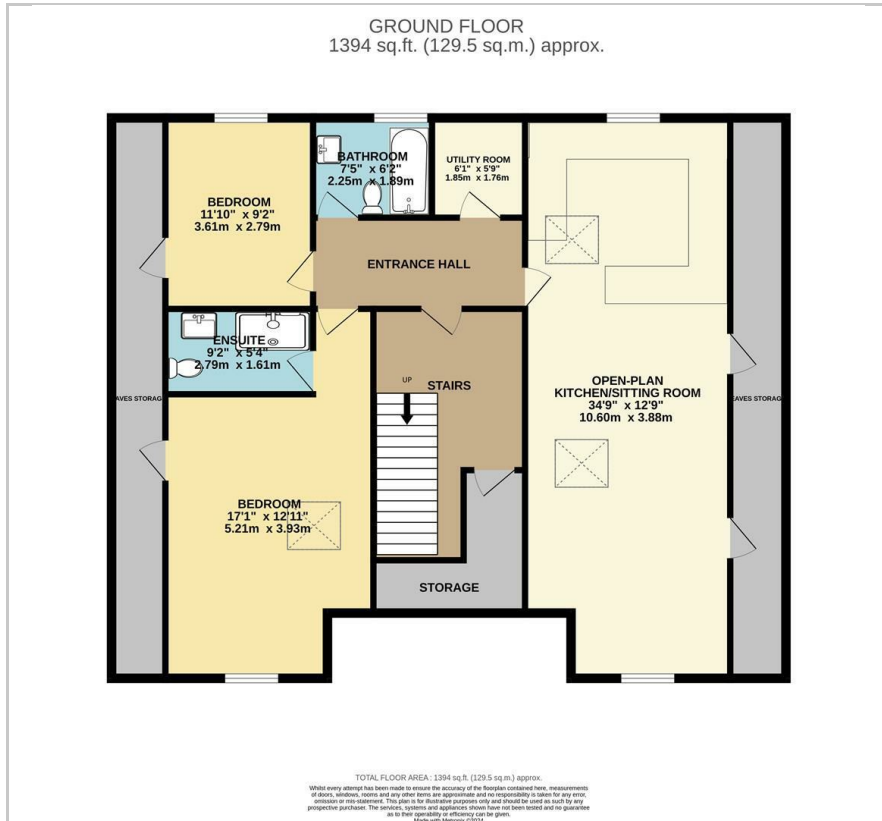
1E Harvey Lane

Thorpe St Andrew, Norwich, NR7 0BG

Guide price £265,000



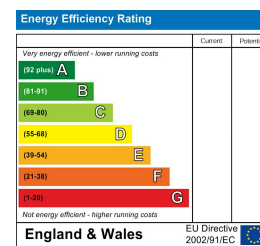
Floor Plan



Area Map



Energy Efficiency Graph



Viewing

Please contact our Ben Allman Estate Agents Office on 01603 555577 if you wish to arrange a viewing appointment for this property or require further information.

- Modern Penthouse Apartment
- Large Eaves Storage
- 10.6m Open-Plan Sitting Room/Kitchen
- No Ground Rent
- Gas Central Heating
- Over 1000sq. ft. of Internal Living Space
- Private Parking
- Service Charge £75PCM
- Converted With A 999 Year Lease
- External Bike Storage



Perched atop a modern complex in the requested suburb of Thorpe St Andrew, this penthouse apartment epitomises contemporary urban living. Boasting over 1000 square feet of internal living space, along with additional external and eaves storage, this residence offers both style and practicality in equal measure.

As you step inside, you're greeted by a spacious and light-filled interior, characterised by sleek design elements and high-end finishes. The open-plan layout seamlessly integrates the living, dining, and kitchen areas, creating a versatile space ideal for modern lifestyles and entertaining guests.

Large windows allow natural light to flood the apartment, creating a bright and airy ambience throughout.

The apartment boasts two generously sized bedrooms, providing comfortable accommodation for residents and guests alike. The master bedroom features an en-suite bathroom, complete with modern fixtures and fittings, while a second bathroom serves the needs of the remaining living areas.

Located in the highly desired suburb of Thorpe St Andrew, the property offers easy access to a wealth of local amenities, including shops, restaurants, and recreational facilities. The nearby River Yare provides opportunities for leisurely walks, scenic boat rides, and outdoor activities.

In summary, this modern penthouse apartment offers a luxurious and convenient lifestyle in one of Norwich's most sought-after locations. With its spacious layout, stylish design, and prime location, it presents an ideal opportunity for those seeking contemporary urban living.



These particulars, whilst believed to be accurate are set out as a general outline only for guidance and do not constitute any part of an offer or contract. Intending purchasers should not rely on them as statements of representation of fact, but must satisfy themselves by inspection or otherwise as to their accuracy. No person in this firm's employment has the authority to make or give any representation or warranty in respect of the property.

2B Spowston Road, Norwich, Norfolk, NR3 4QN
Tel: 01603 555577 Email: enquiries@baela.co.uk www.baela.co.uk