



Connells

Apollo Close  
Swindon



### Property Description

Situated in the highly sought-after area of Oakhurst, North Swindon, this impressive five-bedroom detached home offers spacious and versatile accommodation over three floors, ideal for family living.

Beautifully presented throughout, the property has been meticulously maintained and thoughtfully updated by the current owners. A tasteful, contemporary colour palette, quality flooring and stylish finishes create a bright and airy feel from the moment you enter the welcoming hallway.

The 21ft lounge is an elegant yet comfortable space, perfect for relaxing or entertaining. The stunning 24ft kitchen forms the heart of the home, featuring sleek quartz worktops, modern cabinetry, ample storage and integrated appliances. The adjoining conservatory provides a light-filled additional reception area overlooking the rear garden.

On the first floor are three well-proportioned bedrooms and a family bathroom. The principal bedroom benefits from a dressing area and contemporary en-suite shower room, while bedroom two also enjoys its own modern en-suite. The second floor offers two further versatile bedrooms and an additional shower room, all finished to the same high standard.

Externally, there is a low-maintenance enclosed rear garden, a detached studio with power and light, garage and driveway parking with EV Charging point, completing this superb turn-key home.

### Ground Floor Accommodation Entrance Hall

Double glazed door to the front aspect. Stairs rising to the first floor accommodation. Door to the lounge, kitchen and cloakroom. Under stair storage cupboard.

### Cloakroom

Obscure double glazed window to the front aspect. Two piece suite comprising of Low Level WC and pedestal wash hand basin. Partially tiled to water sensitive areas. Radiator.

### Lounge

21' 4" x 10' 9" ( 6.50m x 3.28m )

Double glazed window to the front aspect. Double glazed French doors to the rear garden. Television point. Telephone point. Two radiators.

### Kitchen

24' 6" x 14' 4" MAX narrowing to 9' 2" ( 7.47m x 4.37m MAX narrowing to 2.79m )

Double glazed window to the front aspect. Fully fitted kitchen with a range of base and wall mounted units comprising of cupboards and drawers. Quartz work tops. Double sink with drainer and hot tap with water disposal. Door leading to the conservatory. Integrated fridge freezer, dishwasher, two ovens and four ring electric hob. Door to the conservatory. Radiator.

### Conservatory

15' 1" x 11' 10" ( 4.60m x 3.61m )

Double glazed window to the rear aspect. Double glazed Bi-folding doors to the rear garden.

### First Floor Accommodation First Floor Landing

Access to bedroom one, bedroom two and bedroom five and family bathroom. Stairs rising to the second floor accommodation. Radiator

## Bedroom One

11' 2" x 10' 9" ( 3.40m x 3.28m )

Double glazed window to the front aspect. Archway to the dressing area. Radiator.

## Dressing Room

6' 4" x 4' ( 1.93m x 1.22m )

Two built-in-wardrobes. Access to the ensuite shower room.

## Ensuite

Obscure double glazed window to the rear aspect. Three piece suite comprising of Low Level WC, pedestal wash hand basin and shower. Space and plumbing for washing machine. Heated towel rail.

## Bedroom Two

11' 6" x 9' 2" ( 3.51m x 2.79m )

Double glazed window to the rear aspect. Access to the ensuite. Radiator.

## Ensuite

Obscure double glazed window to the rear aspect. Three piece suite comprising of Low Level WC, pedestal wash hand basin and shower. Radiator.

## Bedroom Five

9' 5" x 9' 1" ( 2.87m x 2.77m )

Double glazed window to the front aspect. Radiator.

## Bathroom

Obscure double glazed window to the front aspect. Three piece suite comprising of panelled bath with mixer tap and shower over, pedestal wash hand basin and Low Level WC. Radiator.

## Second Floor Accommodation

### Second Floor Landing

Double glazed skylight to the rear aspect. Access to bedroom three, bedroom four and shower room. Radiator.

## Bedroom Three

15' 10" MAX narrowing to 10' 4" x 10' 9" ( 4.83m MAX narrowing to 3.15m x 3.28m )

Double glazed window to the front and rear aspect. Two built-in-wardrobes. Radiator.

## Bedroom Four

13' 3" MAX narrowing to 10' " x 9' 2" ( 4.04m MAX narrowing to 3.05m x 2.79m )

Double glazed window to the front aspect. Built-in-wardrobe. Eaves storage. Radiator.

## Shower Room

Double glazed skylight to the front aspect. Three piece suite comprising of Low Level WC, pedestal wash hand basin and shower. Radiator.

## External Features

### Garage

17' 6" x 9' 1" ( 5.33m x 2.77m )

Up and over door. Double glazed door to the side leading to the garden.

## Studio

24' 1" x 9' 9" ( 7.34m x 2.97m )

Double glazed French doors to the front aspect. Double glazed windows to the front. Power and light.

## Garden

Fenced and walled boundaries. Gate to the front of the property. Door to the garage. Access to the studio. Laid to patio, decking and artificial lawn. Raised beds.

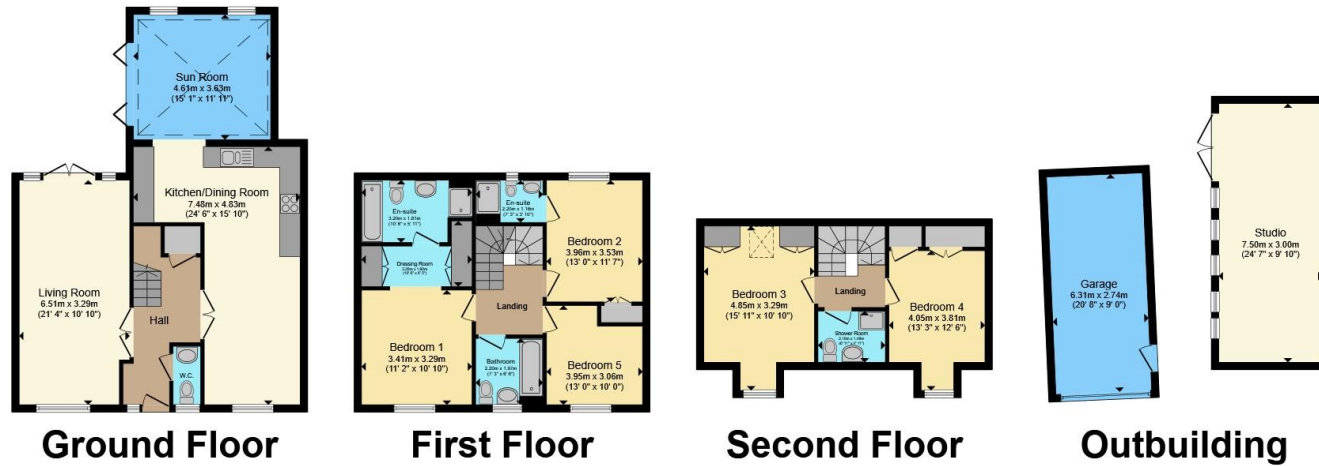
## Parking

Parking in front of the garage. EV Charging point.









Total floor area 199.5 m<sup>2</sup> (2,147 sq.ft.) approx

This floor plan is for illustrative purposes only. It is not drawn to scale. Any measurements, floor areas (including any total floor area), openings and orientation are approximate. No details are guaranteed, they cannot be relied upon for any purpose and they do not form part of any agreement. No liability is taken for any error, omission or misstatement. A party must rely upon its own inspection(s). Powered by [www.propertybox.io](http://www.propertybox.io)



To view this property please contact Connells on

**T 01793 708050**  
**E [swindonnorth@connells.co.uk](mailto:swindonnorth@connells.co.uk)**

Unit B11 North Swindon District Centre Thamesdown Drive  
 SWINDON SN25 4AN

EPC Rating: C Council Tax  
 Band: F

Tenure: Freehold

**view this property online [connells.co.uk/Property/SDN313648](http://connells.co.uk/Property/SDN313648)**



1. MONEY LAUNDERING REGULATIONS Intending purchasers will be asked to produce identification documentation at a later stage and we would ask for your co-operation in order that there will be no delay in agreeing the sale. 2. These particulars do not constitute part or all of an offer or contract. 3. The measurements indicated are supplied for guidance only and as such must be considered incorrect. Potential buyers are advised to recheck measurements before committing to any expense. 4. We have not tested any apparatus, equipment, fixtures, fittings or services and it is in the buyers interest to check the working condition of any appliances.

Connells Residential is registered in England and Wales under company number 1489613, Registered Office is Cumbria House, 16-20 Hockliffe Street, Leighton Buzzard, Bedfordshire, LU7 1GN. VAT Registration Number is 500 2481 05.

**See all our properties at [www.connells.co.uk](http://www.connells.co.uk) | [www.rightmove.co.uk](http://www.rightmove.co.uk) | [www.zoopla.co.uk](http://www.zoopla.co.uk)**

Property Ref: SDN313648 - 0006